

INSTRUCTIONS

1. Original and/or subsequent record used to evaluate the corner position.
2. Description of evidence found, note discrepancies in the record, state method of establishing lost or obliterated corners.
3. Description of monument and accessories set to perpetuate the corner position.
4. Sketch of corner, show all pertinent data which can best be shown in a sketch example, corner marking, topography ties, position of accessories, etc.
5. Certification must be signed and sealed by Land Surveyor registered in the State of Montana.
6. Fill in Cross Index & Section Diagram at bottom of sheet.

CERTIFIED CORNER RECORDATION

Corner M.C. $\frac{523}{526}$ East Bank T. 27 N R. 28 W P.M.M. LINCOLN County

ORIGINAL AND/OR SUBSEQUENT RECORD

ORIGINAL RECORD: Set a Lime Stone, 15"x 12"x 8", 10" in the ground, marked M.C. on W face with 2 grooves on S face;
 From Which:
 A tamarack 30" in diam. bears N18°45'E, 44 lks. dist. mkd. T27N R28W S23 MC BT
 A tamarack 12" in diam. bears S22°15'E, 45 lks. dist. mkd T27N R28W S26 MC BT

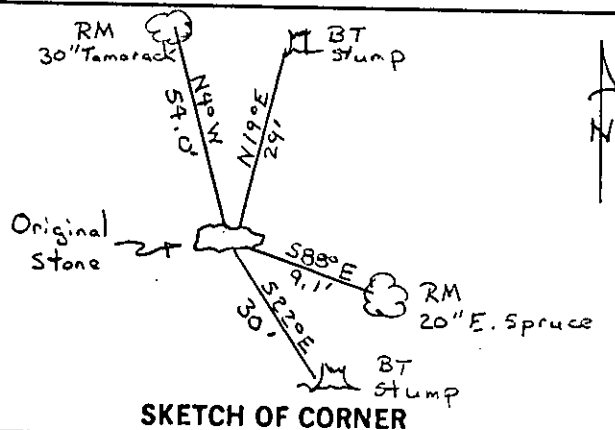
EVIDENCE FOUND

Found Original Stone. From which a original BT stump bears N19°E, 29'. A original BT stump bears S22°E, 30'.

PERPETUATION

Left Stone in Place. Set a 5' Steel Fence Post at approximately 1' West of monument. Established Two RM Trees. An 30" Tamarack bears N4°W, 54.0'. A 20" E. Spruce bears S88°E, 9.1'. Tagged Both RM Trees with MARLS Land Monument Sign and Painted Red Band around Trees

Note: Declination used - 18°E
 Measurements taken to center of tree



CERTIFICATION

I, Glenn R. Howard
 certify the information shown herein is true and correct.

Glenn R. Howard
 Signature Ground Party Chief

I, TERRY L. DRUYVESTEIN
 certify that this Corner Record correctly represents work performed by me or under my direction in compliance with the "Corner Recordation Act", (70-22-101, et seq, M.C.A.F.)

Terry L. Druyvestein
 Signature of Surveyor & Seal

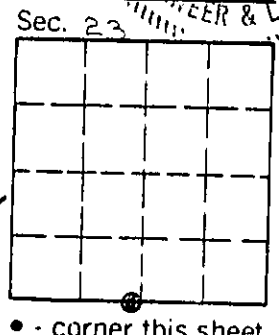
Date: 07/90 Reg. No. 2927 ES 2927ES

Employer: STENSATTER DRUYVESTEIN & ASSOCIATES

MONTANA REGISTERED SURVEYOR

Office of Clerk and Recorder, County of Lincoln. This "corner record" was filed for record on 1-4-91 was noted on the cross-index plat and is assigned page No. 4453, in book No. _____

Glenn R. Howard
 County Official



Cross Index No. R-18-19 T. 27 N R. 28 W P.M.M.

• - corner this sheet