

INSTRUCTIONS

1. Original and/or subsequent record used to evaluate the corner position.
2. Description of evidence found, note discrepancies in the record, state method of establishing lost or obliterated corners.
3. Description of monument and accessories set to perpetuate the corner position.
4. Sketch of corner, show all pertinent data which can best be shown in a sketch example, corner marking, topography ties, position of accessories, etc.
5. Certification must be signed and sealed by Land Surveyor registered in the State of Montana.
6. Fill in Cross Index & Section Diagram at bottom of sheet.

CERTIFIED CORNER RECORDATION

Corner M.C. ⁵²³₅₂₆ West Bank T. 27 N R. 28 W P.M.M. LINCOLN County

ORIGINAL AND/OR
SUBSEQUENT RECORD

ORIGINAL RECORD: Set a Lime Stone, 15" x 12" x 8", 10" in the ground, marked M.C. on E face, with 2 grooves on S face;

From Which:

A fir 12" in diam. bears S12°30'W, 51 lks. dist. mkd. T27N R28W S26 M.C. B.T.

A tamarack 20" in diam. bears N42°30'W, 45 lks. dist. mkd. T27N R28W S23 M.C. B.T.

EVIDENCE FOUND

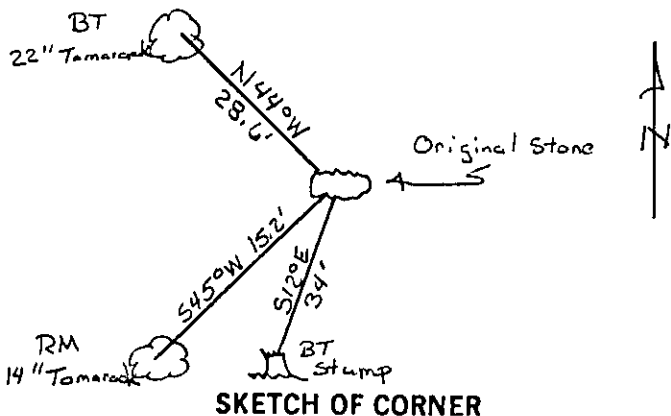
Found original stone. From which a 22" Tamarack bears N44°W, 28.6'. A original BT stump bears S12°E, 34'.

PERPETUATION

Left Stone in Place. Set a 5' Steel Fence Post at approximately 1' East of monument. Established New RM Tree, an 14" Tamarack bears S45°W, 15.2'. Tagged Both RM and BT tree with MARLS Land Monument Sign and Painted Red band around Trees.

Note: Declination used - 18°E

Measurements taken to center of tree



SKETCH OF CORNER

CERTIFICATION

I, Glenn R. Howard
certify the information shown herein is true and correct.

Glenn R. Howard
Signature Ground Party Chief

I, TERRY L. DRUYVESTEIN

certify that this Corner Record correctly represents work performed by me or under my direction in compliance with the "Survey Recordation Act" (70-22-10), et seq., M.C.A.

Terry L. Druyvestein
Signature of Surveyor & Seal

Date: 07/90 Reg. No. 2927ES 2927ES.

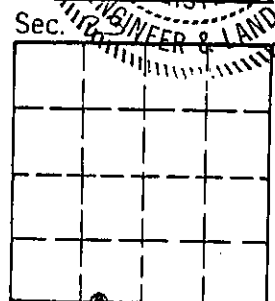
Employer: STENSATTER DRUYVESTEIN & ASSOCIATES

Office of Clerk and Recorder, County of Lincoln. This "corner record" was filed for record on 1-4-91

was noted on the cross-index plat and is assigned page No. 4452, in book No. _____

Janet B. Sigel
County Official

Cross Index No. R-18-19 T. 27 N R. 28 W P.M.M.



• - corner this sheet