

INSTRUCTIONS

1. Original and/or subsequent record used to evaluate the corner position.
2. Description of evidence found, note discrepancies in the record, state method of establishing lost or obliterated corners.
3. Description of monument and accessories set to perpetuate the corner position.
4. Sketch of corner, show all pertinent data which can best be shown in a sketch example, corner marking, topography (lies, position of accessories, etc.
5. Certification must be signed and sealed by Land Surveyor registered in the State of Montana.
6. Fill in Cross Index & Section Diagram at bottom of sheet.

CERTIFIED CORNER RECORDATION

W.P.
S 23 | S 24
Corner South Side T. 27 N R. 28 W P.M.M. LINCOLN County

ORIGINAL AND/OR

SUBSEQUENT RECORD

ORIGINAL RECORD: Set a Limestone 15"x10"x8", 10" in the ground marked W.P. on W face;

From Which:

A pine, 15" in diam. bears N 72° E 12 lks. dist marked W.P. 524 B.T.

A fir, 10" in diam. bears S 21° 15' W 40 lks. dist. marked W.P. 523 B.T.

EVIDENCE FOUND

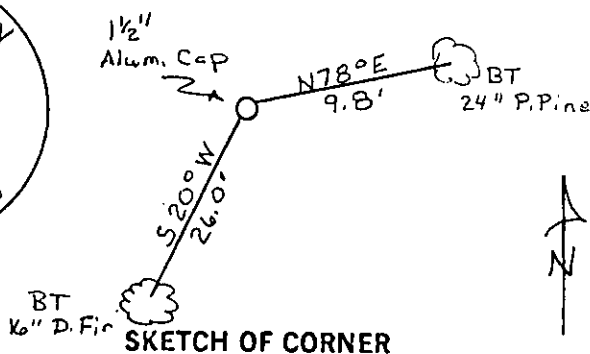
Found Original Stone, Badly Fractured. From which a 24" P. Pine bears N 78° E, 9.8'. A 16" D. Fir bears S 20° W, 26.0'

PERPETUATION

Replaced original stone with 1 1/2" Alum. Cap on 5/8" x 24" Rebar. Set a 5' Steel Fence Post at approximately 1' North of monument. Tagged both BT Trees with MARLS Land Monument Sign and Painted Red Band around Trees.

Note: Declination used - 18° E

Measurements taken to center of tree.



CERTIFICATION

I, Glenn R. Howard
certify the information shown herein is true and correct.

Glenn R. Howard
Signature Ground Party Chief

TERRY L. DRUYVESTEIN

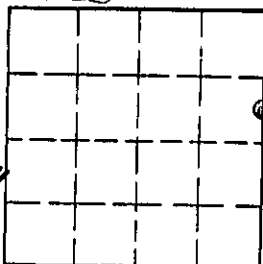
I, Terry L. Druyvestein
certify that this Corner Record correctly represents work performed by me or under my direction in compliance with the "Corner Recordation Act" (70-22-101, et seq., M.C.A.)

Terry L. Druyvestein
Signature of Surveyor & Seal

Date: 02/90 Reg. No. 2927 ES

Employer: STENSATTER DRUYVESTEIN ASSOCIATES

Sec. 23



Office of Clerk and Recorder, County of Lincoln. This "corner record" was filed for record on 1-4-91

was noted on the cross-index plat and is assigned page No. 4448, in

book No. _____

Grant E. Dugil by Bill Buckhoff
County Official

Cross Index No. O-P-21 T. 27 N R. 28 W P.M.M.

• corner this sheet