

**INSTRUCTIONS**

1. Original and/or subsequent record used to evaluate the corner position.
2. Description of evidence found, note discrepancies in the record, state method of establishing lost or obliterated corners.
3. Description of monument and accessories set to perpetuate the corner position.
4. Sketch of corner, show all pertinent data which can best be shown in a sketch example, corner marking, topography ties, position of accessories, etc.
5. Certification must be signed and sealed by Land Surveyor registered in the State of Montana.
6. Fill in Cross Index & Section Diagram at bottom of sheet.

**CERTIFIED CORNER RECORDATION**

Corner 1/4 S22  
S27 T. 27 N R. 28 W P.M.M. LINCOLN County

ORIGINAL AND/OR  
SUBSEQUENT RECORD

ORIGINAL RECORD: Set a Lime Stone, 12" x 10" x 6", 8" in the ground, marked 1/4 on N face;  
From Which:  
A fir 15" in diam. bears S0°45'E, 15 lks. dist. marked 1/4 S27 B.T.  
A fir 10" in diam. bears N86°45'W, 66 lks. dist. marked 1/4 S22 B.T.

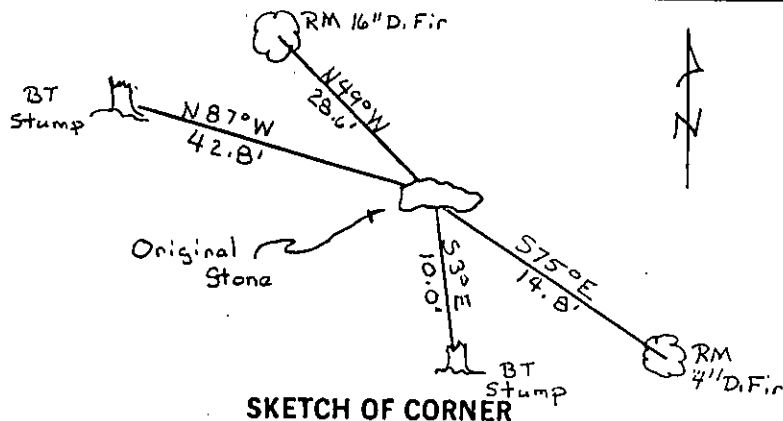
EVIDENCE FOUND

Found Original Stone with scribing visible. From Which a original BT stump with scribing bears N87°W, 42.8'. A original BT stump bears S3°E, 10.0'.

PERPETUATION

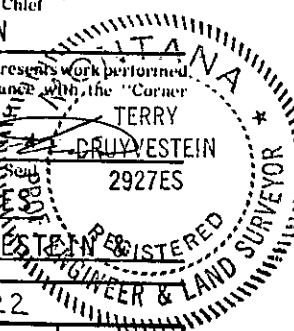
Left Stone in Place. Set a 5' Steel Fence Post at approximately 1' West of monument. Established Two RM Trees a 16" D. Fir bears N49°W, 28.6'. A 4" D. Fir bears S75°E, 14.8'. Both RM Trees tagged with MARLS Land Monument Sign and Painted Red Band around Trees.

Note: Declination used -18°E  
Measurements taken to center of tree.

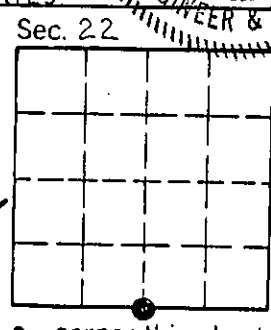


SKETCH OF CORNER

**CERTIFICATION**  
I, Glenn R. Howard  
certify the information shown herein is true and correct.  
Glenn R. Howard  
Signature Ground Party Chief  
I, TERRY L. DRUYVESTEIN  
certify that this Corner Record correctly represents work performed by me or under my direction in compliance with the "Corner Recordation Act" (70-22-101, et seq., M.C.A.)  
TERRY L. DRUYVESTEIN  
Signature of Surveyor & Seal  
Date: 02/90 Reg. No. 2927  
Employer: STENSATTER DRUYVESTEIN & ASSOCIATES



Office of Clerk and Recorder, County of Lincoln. This "corner record" was filed for record on 1-4-91 was noted on the cross-index plat and is assigned page No. 4447, in book No. \_\_\_\_\_  
Janet B. Sugil by Bill Buschoff  
County Official



Cross Index No. R-15 T. 27 N R. 28 W P.M.M. • corner this sheet