

INSTRUCTIONS

1. Original and/or subsequent record used to evaluate the corner position.
2. Description of evidence found, note discrepancies in the record, state method of establishing lost or obliterated corners.
3. Description of monument and accessories set to perpetuate the corner position.
4. Sketch of corner, show all pertinent data which can best be shown in a sketch example, corner marking, topography ties, position of accessories, etc.
5. Certification must be signed and sealed by Land Surveyor registered in the State of Montana.
6. Fill In Cross Index & Section Diagram at bottom of sheet.

CERTIFIED CORNER RECORDATION

Corner $\frac{1}{4}$ S27 $\frac{1}{4}$ S26 T. 27 N R. 28 W P.M.M. LINCOLN County

ORIGINAL AND/OR
SUBSEQUENT RECORD

ORIGINAL RECORD: Set a Lime Stone, 18"x12"x8", 12" in the ground, marked $\frac{1}{4}$ on W face;

From Which:

A pine 16" in diam. bears $55^{\circ}30'E$, 22 lks. dist. marked $\frac{1}{4}$ S26 B.T.

A pine 20" in diam. bears $N23^{\circ}30'W$, 30 lks. dist. marked $\frac{1}{4}$ S27 B.T.

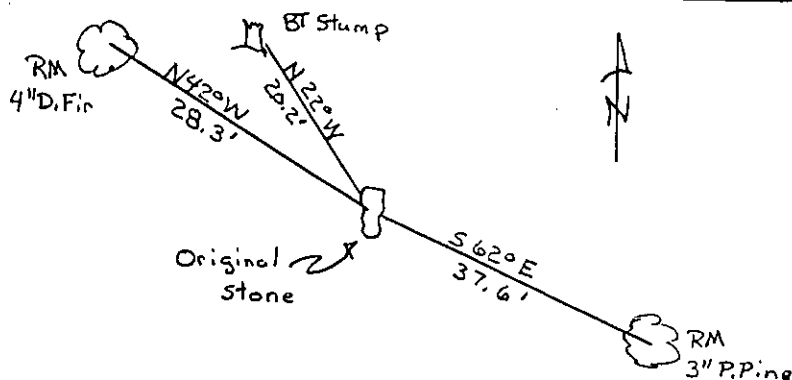
EVIDENCE FOUND

Found Original Stone with scribing visible. From which a original BT stump with scribing visible bears $N22^{\circ}W$, 20.2'

PERPETUATION

Left Stone in Place. Set 5' Steel Fence Post at approximately 1' West of monument. Established Two RM's. A 4"D. Fir bears $N42^{\circ}W$, 28.3'. A 3"P. Pine bears $S62^{\circ}E$, 37.6' Both RM Trees tagged with MARLS Land Monument Sign and Painted Red Band around Trees.

Note: Declination used - $18^{\circ}E$
Measurements taken to Center of Tree.



SKETCH OF CORNER

CERTIFICATION

I, Glenn R. Howard
certify the information shown herein is true and correct.

Glenn R. Howard
Signature Ground Party Chief

I, TERRY L. DRUYVESTEIN
certify that this Corner Record correctly represents work performed by me or under my direction in compliance with the "Corner Recordation Act" (70-27-101, et seq., M.C.A.)

Terry L. Druyvestein
Signature of Surveyor

Date: 07/90 Reg. No. 2927 ES

Employer: STENSATTER DRUYVESTEIN & ASSOCIATES

Office of Clerk and Recorder, County of Lincoln. This "corner record" was filed for record on 1-4-91

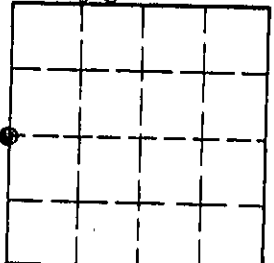
was noted on the cross-index plat and is assigned page No. 4445, in

book No. _____

Janet D. Sigel by Eric Bucklin
County Official

Cross Index No. T-17 T. 27 N R. 28 W P.M.M.

Sec. 26



• corner this sheet