

**INSTRUCTIONS**

1. Original and/or subsequent record used to evaluate the corner position.
2. Description of evidence found, note discrepancies in the record, state method of establishing lost or obliterated corners.
3. Description of monument and accessories set to perpetuate the corner position.
4. Sketch of corner, show all pertinent data which can best be shown in a sketch example, corner marking, topography ties, position of accessories, etc.
5. Certification must be signed and sealed by Land Surveyor registered in the State of Montana.
6. Fill in Cross Index & Section Diagram at bottom of sheet.

**CERTIFIED CORNER RECORDATION**

Corner 1/4 S 26  
S 35 T. 27 N R. 28 W P.M.M. LINCOLN County

**ORIGINAL AND/OR SUBSEQUENT RECORD**

**ORIGINAL RECORD:** Set a Lime Stone, 20" x 12" x 6", 15" in the ground, marked 1/4 on N face;  
From Which:  
A fir 10" in diam. bears S10°15'E, 20 lks. dist. marked 1/4 S 35 B.T.  
A pine 12" in diam. bears N8°W, 53 lks. dist. marked 1/4 S 26 B.T.

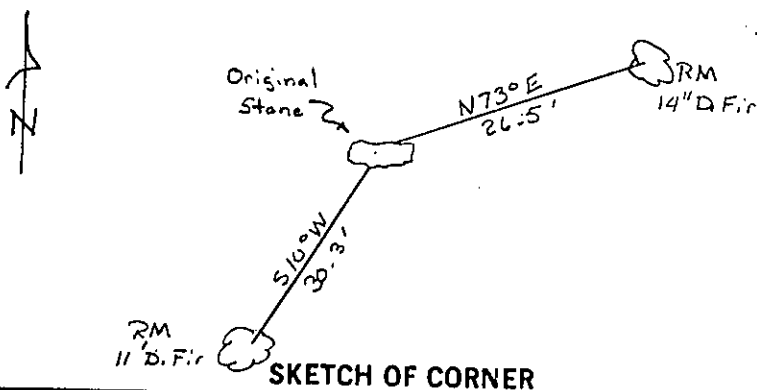
**EVIDENCE FOUND**

Found Original Stone  
Note: Both Original BT's burned out. Only Stump holes remain.

**PERPETUATION**

Left Stone in Place. Set 5' Steel Fence Post at approximately 1' West of monument. Established Two RM's. A 14" D. Fir bears N73°E, 26.5'. A 11" D. Fir bears S10°W, 30.3'. Tagged both RM Trees with MARLS Land Monument Sign and Painted Red Band around Trees.

Note: Declination used -18°E  
Measurements taken to center of tree.



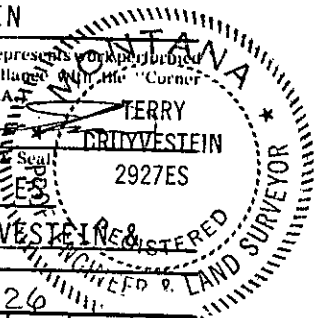
**SKETCH OF CORNER**

**CERTIFICATION**

I, Glenn R. Howard  
certify the information shown herein is true and correct.  
Glenn R. Howard  
Signature Ground Party Chief

I, TERRY L. DRUYVESTEIN  
certify that this Corner Record correctly represents work performed by me or under my direction in compliance with the "Corner Recordation Act" (70-22-101), et seq., M.C.A.  
TERRY L. DRUYVESTEIN  
Signature of Surveyor & Seal

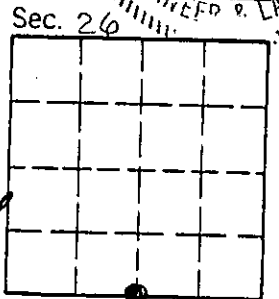
Date: 07/90 Reg. No. 2927ES  
Employer: STENSATTER DRUYVESTEIN & ASSOCIATES



Office of Clerk and Recorder, County of Lincoln. This "corner record" was filed for record on 1-4-91

was noted on the cross-index plat and is assigned page No. 4444, in book No. \_\_\_\_\_

Janet BT Sugil by Bill Beal  
County Official



• - corner this sheet

Cross Index No. V-19 T. 27 N R. 28 W P.M.M.