

INSTRUCTIONS

1. Original and/or subsequent record used to evaluate the corner position.
2. Description of evidence found, note discrepancies in the record, state method of establishing lost or obliterated corners.
3. Description of monument and accessories set to perpetuate the corner position.
4. Sketch of corner, show all pertinent data which can best be shown in a sketch example, corner marking, topography files, position of accessories, etc.
5. Certification must be signed and sealed by Land Surveyor registered in the State of Montana.
6. Fill in Cross Index & Section Diagram at bottom of sheet.

CERTIFIED CORNER RECORDATION

Corner $\begin{matrix} S21 & | & S22 \\ \hline S28 & | & S27 \end{matrix}$ T. 27 N R. 28 W P.M.M. LINCOLN County

ORIGINAL AND/OR SUBSEQUENT RECORD

ORIGINAL RECORD: Set a Lime Stone, 20" x 10" x 6", 15" in the ground, marked with 2 notches on S, and 3 notches on E edges;
 From Which:
 A fir 8" in diam. bears N58°30'E, 6 lks. dist. mkd. T27N R28W S22 BT.
 A fir 12" in diam. bears S47°15'E, 26 lks. dist. mkd. T27N R28W S27 BT.
 A fir 10" in diam. bears S49°20'W, 15 lks. dist. mkd. T27N R28W S28 BT.
 A tamarack 30" in diam. bears N76°W, 16 lks. dist. mkd. T27N R28W S21 BT.

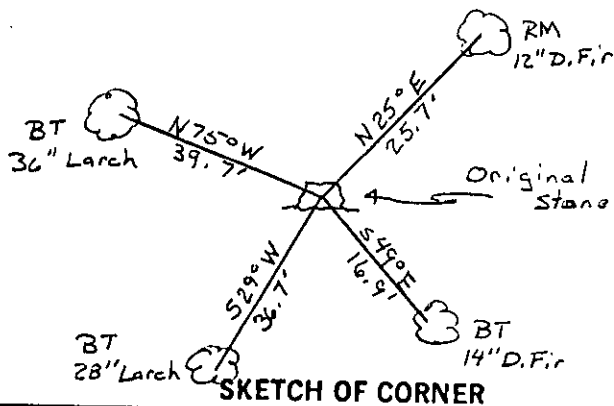
EVIDENCE FOUND

Found Original Stone. From which a 36" Larch with scribing visible bears N75°W, 39.7'. A 14" D. Fir with scribing visible bears S49°E, 16.9'

PERPETUATION

Left Stone in Place. Established Two RM's. A 12" D. Fir bears N25°E, 25.7'. A 28" Larch bears S29°W, 36.7'. Both RM Trees Blazed Painted and Tagged with MARLS Land Monument Sign.

Note: Declination used -18°E
 Measurements taken to center of tree



CERTIFICATION

I, Red Cone
 certify the information shown herein is true and correct.

Red Cone
 Signature Ground Party Chief

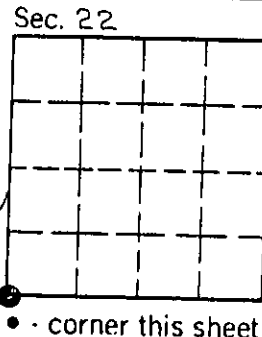
I, TERRY L. DRUYVESTEIN
 certify that this Corner Record correctly represents work performed by me or under my direction in compliance with the "Corner Recordation Act" (70-22-101, et seq., M.C.A.)

TERRY L. DRUYVESTEIN
 Signature of Surveyor & Seal

Date: 07/90 Reg. No. 2927 ES REGISTERED
 Employer: STENSATTER DRUYVESTEIN & ASSOCIATES LAND SURVEYOR

Office of Clerk and Recorder, County of Lincoln. This "corner record" was filed for record on 1-4-91 was noted on the cross-index plat and is assigned page No. 4441, in book No. _____

Janet B. Sugel by Bill Beckel
 County Official



Cross Index No. R-13 T. 27 N R. 28 W P.M.M.