

INSTRUCTIONS

1. Original and/or subsequent record used to evaluate the corner position.
2. Description of evidence found, note discrepancies in the record, state method of establishing lost or obliterated corners.
3. Description of monument and accessories set to perpetuate the corner position.
4. Sketch of corner, show all pertinent data which can best be shown in a sketch example, corner marking, topography ties, position of accessories, etc.
5. Certification must be signed and sealed by Land Surveyor registered in the State of Montana.
6. Fill in Cross Index & Section Diagram at bottom of sheet.

CERTIFIED CORNER RECORDATION

Corner S15 | S14
S22 | S23 T. 27 N R. 28 W P.M.M. LINCOLN County

ORIGINAL AND/OR SUBSEQUENT RECORD

ORIGINAL RECORD: Set a Slate Stone, 18"x8"x6", 12" in the ground, marked with 3 notches on S and 2 notches on E edges;

From Which:

- A pine 30" in diam. bears N36°30' E 55 lks. dist. mkd. T27N R28W S14 B.T.
- A pine 10" in diam. bears S69°45' E 82 lks. dist. mkd. T27N R28W S23 B.T.
- A pine 10" in diam. bears S80°15' W 45 lks. dist. mkd. T27N R28W S22 B.T.
- A pine 12" in diam. bears N69° W 56 lks. dist. mkd. T27N R28W S15 B.T.

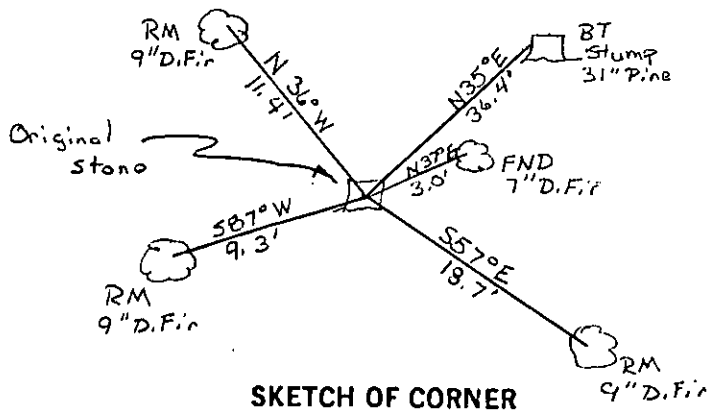
EVIDENCE FOUND

Found Set Stone with notches visible on south edge. Found Original BT 31" Pine Stump bears N35° E, 36.4'. Found 7" D. Fir with Anaconda F.P. Location tag dated 1972 bears N37° E, bears 3.0'

PERPETUATION

Left Stone in Place and Set 5' Steel Fence Post 1' West of Monument. Established Three RM Trees. A 9" D. Fir bears N36° W, 11.4'. A 9" D. Fir bears S87° W, 9.3'. A 9" D. Fir bears S57° E, 18.7'. All RM Trees Blazed, Painted and Tagged with MARLS Land Monument Sign.

Note: Declination used - 18° E
Measurements taken to center of tree



CERTIFICATION

I, Red Cone certify the information shown herein is true and correct.

Signature Ground Party Chief
TERRY L. DRUYVESTEIN

I certify that this Corner Record correctly represents work performed by me or under my direction in compliance with the "Corner Recordation Act" 10-22-101, et seq. M.C.A. DRUYVESTEIN

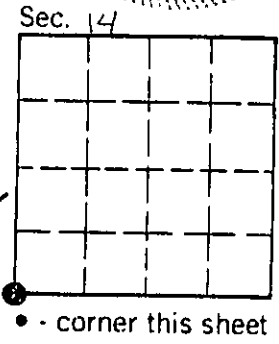
Signature of Surveyor & Seal
TERRY L. DRUYVESTEIN 2027ES

Date: 07/90 Reg. No. 2827 REGISTERED SURVEYOR

Employer: STENSATTER DRUYVESTEIN & ASSOCIATES SURVEYOR & LAND SURVEYOR

Office of Clerk and Recorder, County of Lincoln. This "corner record" was filed for record on 1-4-91 was noted on the cross-index plat and is assigned page No. 4438, in book No. _____

Janis B. Sigel by Bill Buckell
County Official



Cross Index No. N-17 T. 27 N R. 28 W P.M.M.