

INSTRUCTIONS

1. Original and/or subsequent record used to evaluate the corner position.
2. Description of evidence found, note discrepancies in the record, state method of establishing lost or obliterated corners.
3. Description of monument and accessories set to perpetuate the corner position.
4. Sketch of corner, show all pertinent data which can best be shown in a sketch example, corner marking, topography ties, position of accessories, etc.
5. Certification must be signed and sealed by Land Surveyor registered in the State of Montana.
6. Fill in Cross Index & Section Diagram at bottom of sheet.

CERTIFIED CORNER RECORDATION

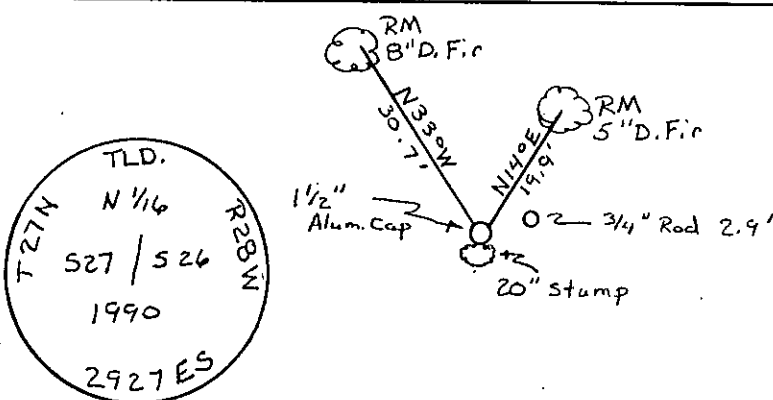
Corner N 1/4 Sec 27 / 526 T. 27 N R. 28 W P.M.M. LINCOLN County

ORIGINAL AND/OR
SUBSEQUENT RECORD None

EVIDENCE FOUND - 3/4" steel Rod.

PERPETUATION Set 1 1/2" Alum. Cap on 5/8" x 24" Rebar. Established Two RM Trees.
An 5" D. Fir bears N 146° E, 19.9'. A 8" D. Fir bears N 33° W, 30.7'

Note: Declination used - 20° E
Measurements to center of tree.



SKETCH OF CORNER

CERTIFICATION

I, Glenn R. Howard
certify the information shown herein is true and correct.

Glenn R. Howard
Signature Ground Rod Clerk

TERRY L. DRUYVESTEIN

I, Terry L. Druyvestein
certify that this Corner Record correctly represents work performed by me or under my direction in compliance with the "Corner Recordation Act" (70-22-101, et seq., M.C.A.)

Terry L. Druyvestein
Signature of Surveyor & Seal

Date: 02/90 Reg. No. 2927 ES

Employer: STENSATTER DRUYVESTEIN ASSOCIATES, INC.

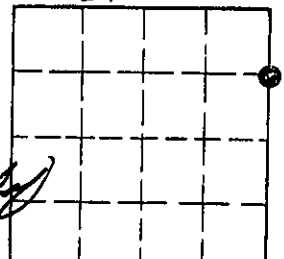
Office of Clerk and Recorder, County of Lincoln. This "corner record" was filed for record on 1-4-91

was noted on the cross-index plat and is assigned page No. 4427, in book No. _____

Janet B. Sugel by Bill Budy
County Official

Cross Index No. S-17 T. 27 N R. 28 W P.M.M.

Sec. 27



• corner this sheet