

INSTRUCTIONS

1. Original and/or subsequent record used to evaluate the corner position.
2. Description of evidence found, note discrepancies in the record, state method of establishing lost or obliterated corners.
3. Description of monument and accessories set to perpetuate the corner position.
4. Sketch or corner, show all pertinent data which can best be shown in a sketch example, corner marking, topography ties, position of accessories, etc.
5. Certification must be signed and sealed by Registered Land Surveyor in State of Montana.
6. Fill in Cross Index & Section Diagram at bottom of sheet.

CERTIFIED CORNER RECORDATION

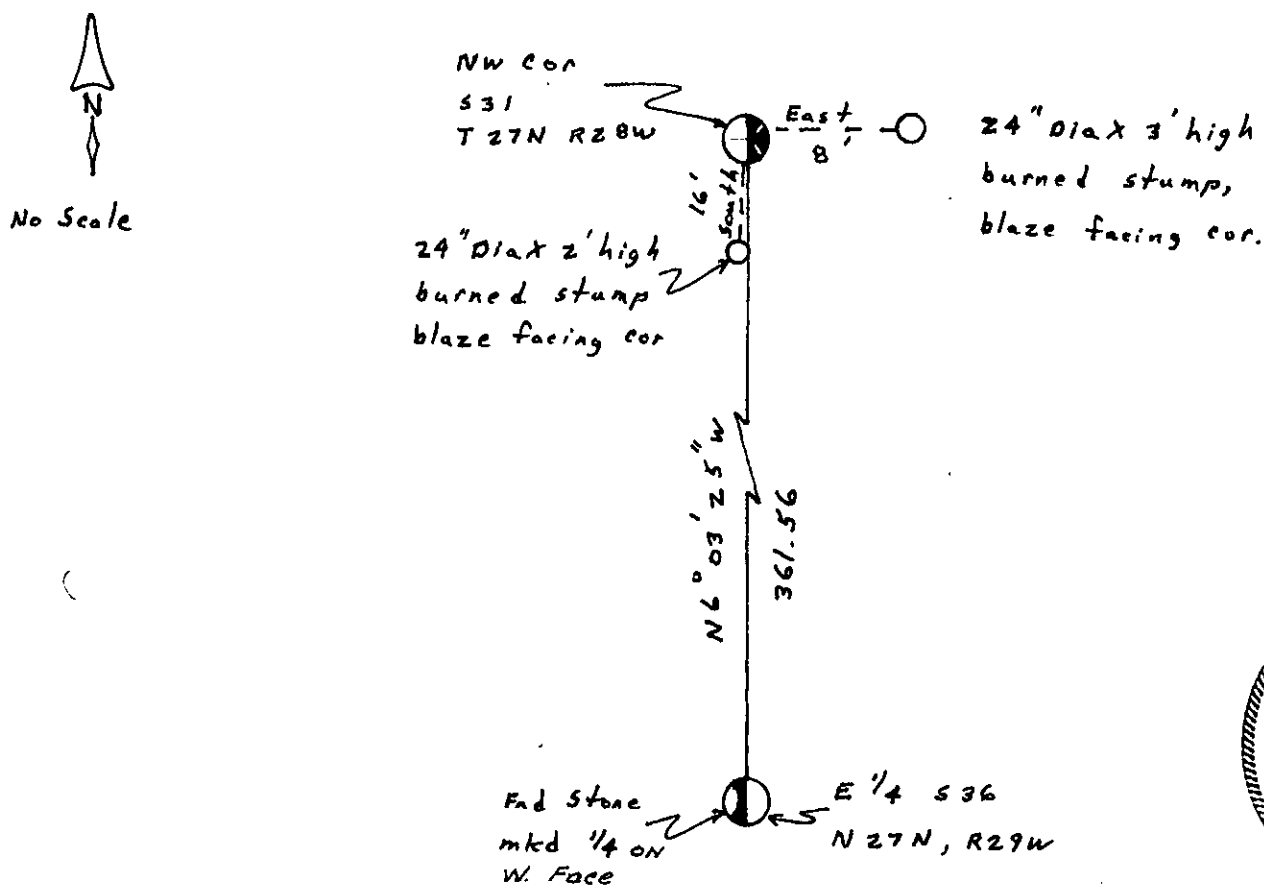
Corner NW Cor S31 T. 27N R. 28W P.M.M. Lincoln County

I. 1902 GLO Record by Adams and Weeks - set a limestone 24x12x8 ins, 18 ins in the ground for cor of sec. 30 and 31 mkd with 1 notch on S and 5 notches on N edges, from which:

a tamarack, 30 ins diam, bears N71°E, 11 lks
a fir, 36 ins diam, bears S10°30'E, 24 lks

II. Found a 8"x8"x8" up limestone firmly set, with 1 notch on N edge and 6 notches on E edge which differs of original record. No evidence of original BT's remain (Area has been burned over).

III. Blaze 2 burned stumps as new BT's. See sketch for additional ties and accessories.



CERTIFICATION

I, Steven B. Ivey, 9329LS
certify the information shown herein is true and correct.

Steven B. Ivey
Signature Ground Party Chief

I, Dwight L. Axelsen
certify that this Corner Record correctly represents work performed by me or under my direction in compliance with the "Corner Recordation Act" (70-22-101, et seq., M.D.A.)

Dwight L. Axelsen
Signature of Surveyor & Seal

Date: Nov. 89 Reg. No. 8641LS

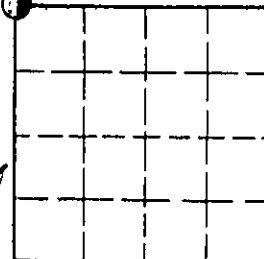
Employer: Delta Engineering

SKETCH OF CORNER

Office of Clerk and Recorder, County of Lincoln. This "corner record" was filed for record on the Dec 1 day of 1989 was noted on the cross-index plat and is assigned page No. 4114, in book No. _____

Cross Index No. V-1 T. 27 R. 28 P.M.M.

*Sec. 31 NW Cor



• corner this sheet