

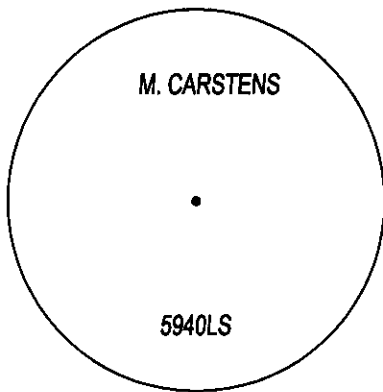
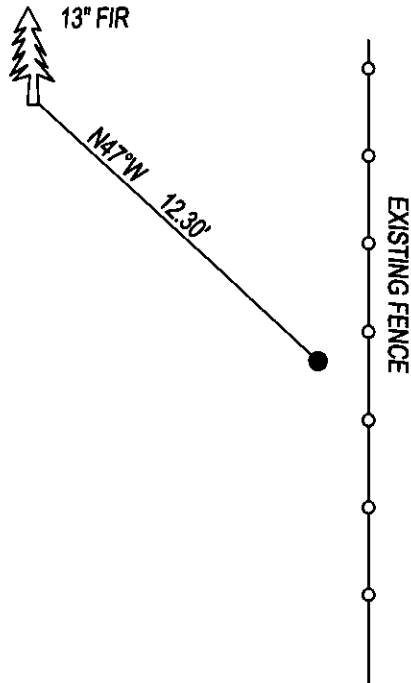
CERTIFIED CORNER RECORDATION

CORNER S 1/16 SEC.15 & 16 T. 27N , R. 28W , P.M.M., LINCOLN COUNTY

RECORD: NONE

FOUND: NOTHING

MAINTENANCE: SET 5/8"x24" REBAR WITH YPC STAMPED AS SHOWN, FROM WHICH;
 13" FIR BEARS N47°W, 12.30' SCRIBED RM.
 CORNER FALLS 2.50' WEST OF FENCE, SET STEEL POST 1 FOOT EAST OF CORNER.
 PAINTED RED BAND AND BLAZE ON BT.



SKETCH OF CORNER

CERTIFICATION

I, DAN CROFT
 CERTIFY THE INFORMATION SHOWN HEREIN IS TRUE AND CORRECT.

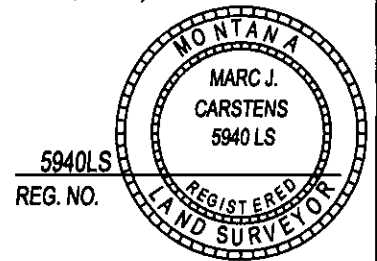
SIGNATURE GROUND PARTY CHIEF

I, MARC J. CARSTENS
 CERTIFY THAT THIS CORNER RECORD CORRECTLY REPRESENTS WORK
 PERFORMED BY ME OR UNDER MY DIRECTION IN COMPLIANCE WITH THE
 "CORNER RECORDATION ACT" (70-22-101, ET SEQ., M.C.A.)

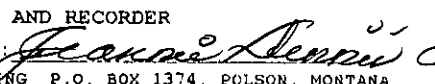

 SIGNATURE OF SURVEYOR & SEAL

03-21-14
 DATE

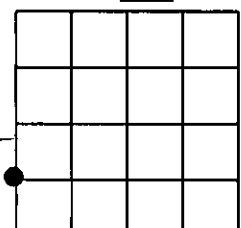
CARSTENS SURVEYING
 EMPLOYER



5940LS
 REG. NO.

OFFICE OF CLERK AND RECORDER COUNTY OF LINCOLN
 THIS "CORNER RECORD" WAS FILED 250575 BOOK: CCR CC&R'S PAGE: 12109 Pages: 1
 STATE OF MONTANA LINCOLN COUNTY
 WA: RECORDED: 03/24/2014 11:50 KOI: CC&R'S
 AND IS ASSIGNED PAGE NO. TAMMY D. LAUER CLERK AND RECORDER
 FEE: \$0.00 BY: 
 COUNTY OFFICIAL FOR: CARSTENS LAND SURVEYING P.O. BOX 1374, POLSON, MONTANA

SEC. 15



● CORNER THIS SHEET

CROSS INDEX NO. M-13 T. 27N , R. 28W , P.M.M.
 ADOPTED JULY 1, 1981, MONTANA BOARD OF PROFESSIONAL ENGINEERS & LAND SURVEYORS