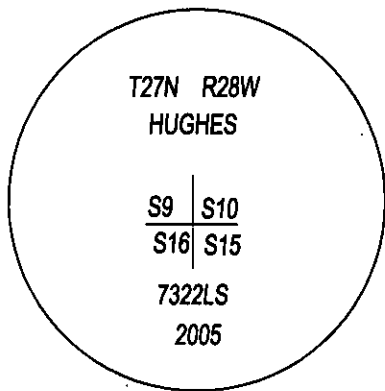
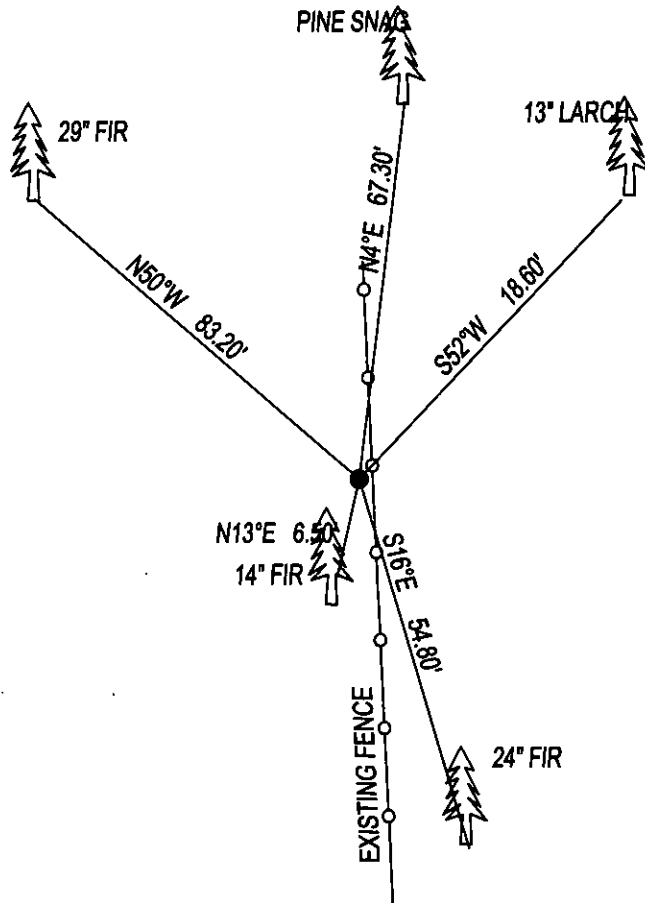


CERTIFIED CORNER RECORDATION

CORNER NW CORNER SEC.15 T. 27N , R. 28W , P.M.M., LINCOLN COUNTY

FOUND: 3 1/4" ALUM CAP STAMPED AS SHOWN, FROM WHICH;
16" LARCH WITH TAG BEARS N52°E, 18.60'.
19" FIR WITH TAG BEARS S16°E, 54.80'.
10" FIR WITH TAG BEARS S13°W, 6.50'.
27" FIR WITH TAG BEARS N50°W, 83.20'.
PINE SNAG WITH TAG BEARS N4°E, 67.30'.

MAINTENANCE: REMOVED BRUSH AND TREE LIMBS
PAINTED RED BAND AND BLAZE ON BT.



SKETCH OF CORNER

CERTIFICATION

I, DAN CROFT
CERTIFY THE INFORMATION SHOWN HEREIN IS TRUE AND CORRECT.

SIGNATURE GROUND PARTY CHIEF

I, MARC J. CARSTENS
CERTIFY THAT THIS CORNER RECORD CORRECTLY REPRESENTS WORK
PERFORMED BY ME OR UNDER MY DIRECTION IN COMPLIANCE WITH THE
"CORNER RECORDATION ACT" (70-22-101, ET SEQ., M.C.A.)

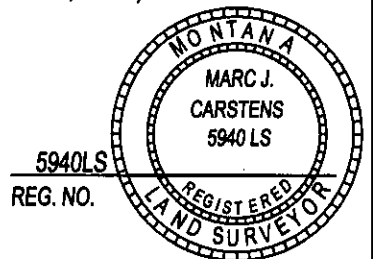
[Signature]
SIGNATURE OF SURVEYOR & SEAL

03-21-14

DATE

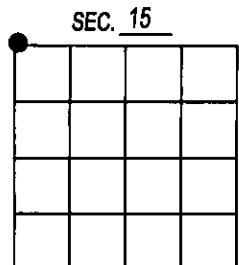
CARSTENS SURVEYING

EMPLOYER



5940LS
REG. NO.

OFFICE OF CLERK AND RECORDER COUNTY OF LINCOLN
THIS "CORNER RECORD" WAS 250573 BOOK: CCR CC&R'S PAGE: 12107 Pages: 1
AND IS ASSIGNED PAGE NO. 1 STATE OF MONTANA LINCOLN COUNTY
RECORDED: 03/24/2014 11:40 KOI: CC&R'S
TAMMY D. LAUER CLERK AND RECORDER
FEE: \$0.00 BY: [Signature]
COUNTY OFFICIAL FOR: CARSTENS LAND SURVEYING P.O. BOX 1374, POLSON, MONTANA
CROSS INDEX NO. J-13 T. 27N , R. 28W , P.M.M.
ADOPTED JULY 1, 1981, MONTANA BOARD OF PROFESSIONAL ENGINEERS & LAND SURVEYORS



● CORNER THIS SHEET