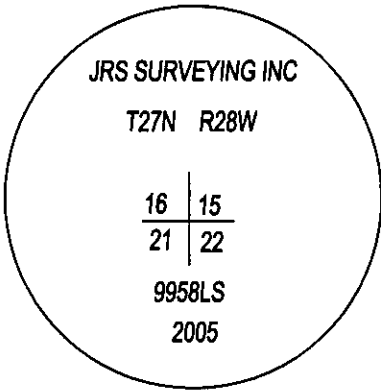
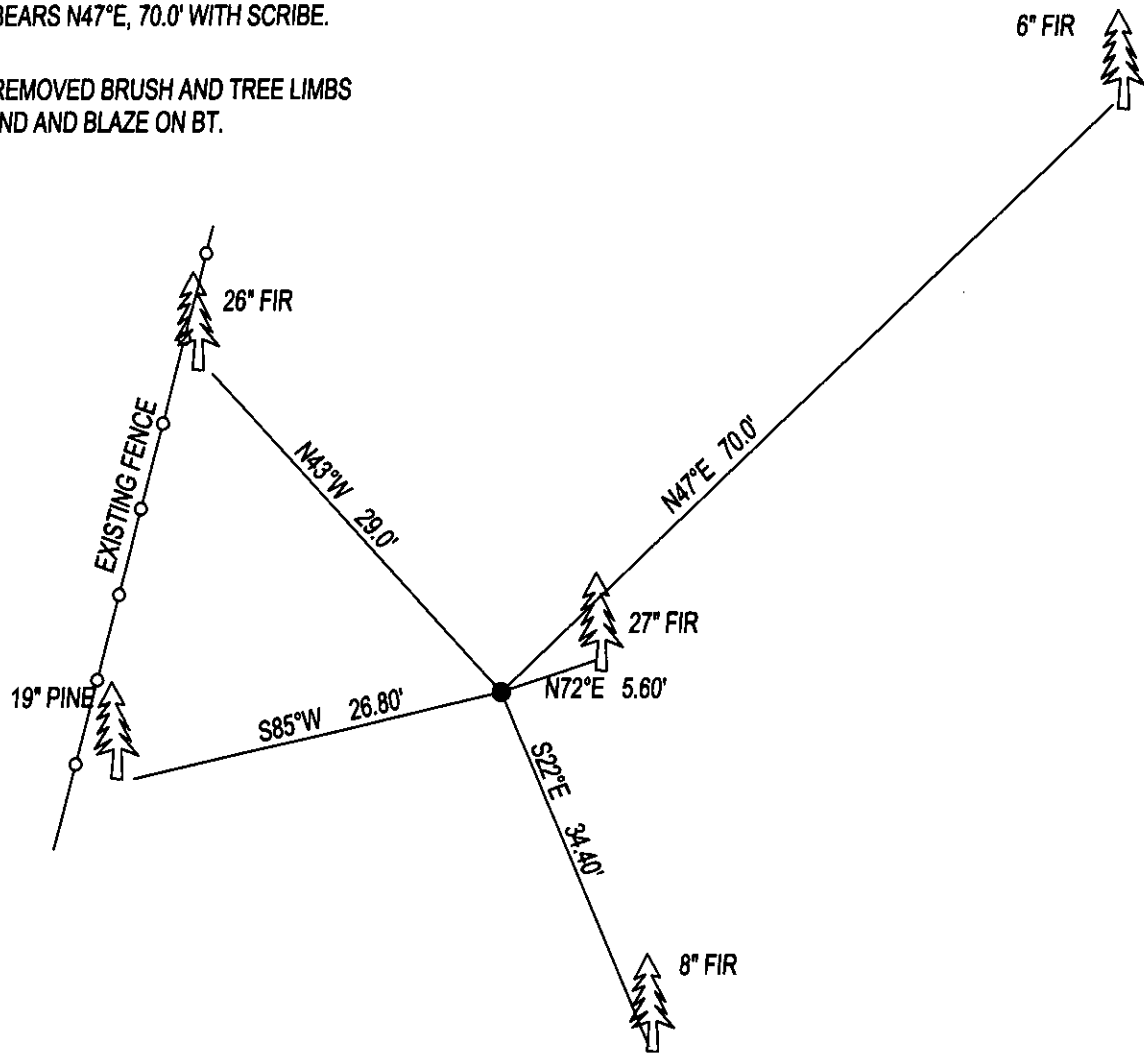


CERTIFIED CORNER RECORDATION

CORNER SW CORNER SEC.15 T. 27N R. 28W P.M.M., LINCOLN COUNTY

FOUND: 3 1/4" ALUM CAP STAMPED AS SHOWN, FROM WHICH;
27" FIR WITH TAG BEARS N72°E, 5.60' WITH SCRIBE.
19" PINE WITH TAG BEARS S85°W, 26.80' WITH SCRIBE.
8" FIR WITH TAG BEARS S22°E, 34.40' WITH SCRIBE.
26" FIR WITH TAG BEARS N43°W, 29.0' WITH SCRIBE.
6" FIR WITH TAG BEARS N47°E, 70.0' WITH SCRIBE.

MAINTENANCE: REMOVED BRUSH AND TREE LIMBS
PAINTED RED BAND AND BLAZE ON BT.



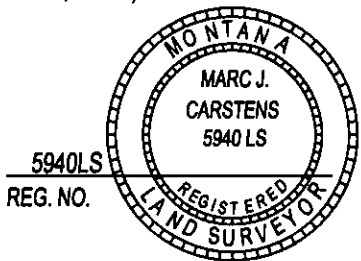
SKETCH OF CORNER

CERTIFICATION

I, DAN CROFT
CERTIFY THE INFORMATION SHOWN HEREIN IS TRUE AND CORRECT.

SIGNATURE GROUND PARTY CHIEF
I, MARC J. CARSTENS
CERTIFY THAT THIS CORNER RECORD CORRECTLY REPRESENTS WORK
PERFORMED BY ME OR UNDER MY DIRECTION IN COMPLIANCE WITH THE
"CORNER RECORDATION ACT" (70-22-101, ET SEQ., M.C.A.)

[Signature]
SIGNATURE OF SURVEYOR & SEAL
03-21-14
DATE
CARSTENS SURVEYING
EMPLOYER



OFFICE OF CLERK AND RECORDER, COUNTY OF LINCOLN
THIS "CORNER RECORD" WAS FILED 250572 BOOK: CCR CC&R'S PAGE: 12106 Pages: 1
STATE OF MONTANA LINCOLN COUNTY
AND IS ASSIGNED PAGE NO. 1
RECORDED: 03/24/2014 11:35 KOI: CC&R'S
TAMMY D. LAUER CLERK AND RECORDER
FEE: \$0.00 BY: *[Signature]*
COUNTY OFFICIAL
FOR: CARSTENS LAND SURVEYING P.O. BOX 1374, POLSON, MONTANA
CROSS INDEX NO. N-13 T. 27N R. 28W P.M.M.
ADOPTED JULY 1, 1981, MONTANA BOARD OF PROFESSIONAL ENGINEERS & LAND SURVEYORS

SEC. 15

● CORNER THIS SHEET