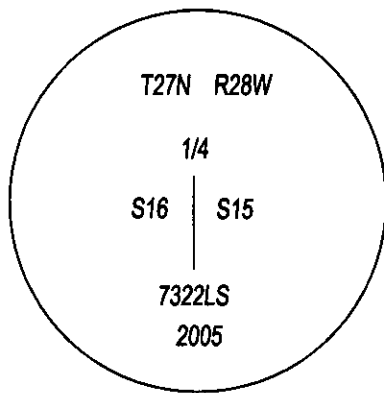
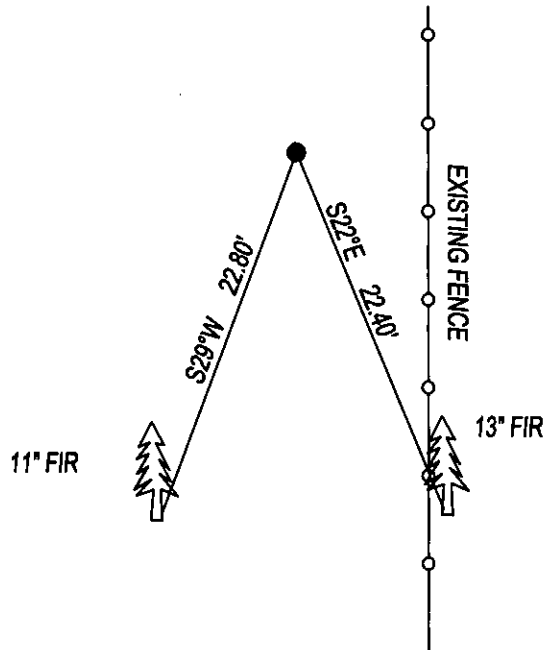


CERTIFIED CORNER RECORDATION

CORNER W1/4 CORNER SEC.15 T. 27N , R. 28W , P.M.M., LINCOLN COUNTY

FOUND: 3 1/4" ALUM CAP STAMPED AS SHOWN, FROM WHICH;  
13" FIR WITH TAG BEARS S22°E, 22.40'.  
11" FIR WITH TAG BEARS S29°W, 22.80'.

MAINTENANCE: REMOVED BRUSH AND TREE LIMBS  
PAINTED RED BAND AND BLAZE ON BT.



SKETCH OF CORNER

CERTIFICATION

I, DAN CROFT  
CERTIFY THE INFORMATION SHOWN HEREIN IS TRUE AND CORRECT.

SIGNATURE GROUND PARTY CHIEF

I, MARC J. CARSTENS  
CERTIFY THAT THIS CORNER RECORD CORRECTLY REPRESENTS WORK  
PERFORMED BY ME OR UNDER MY DIRECTION IN COMPLIANCE WITH THE  
"CORNER RECORDATION ACT" (70-22-101, ET SEQ., M.C.A.)

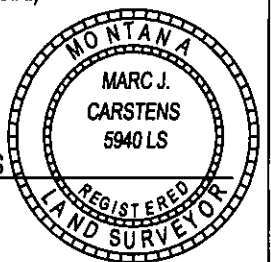
MJC  
SIGNATURE OF SURVEYOR & SEAL

03-21-14

DATE

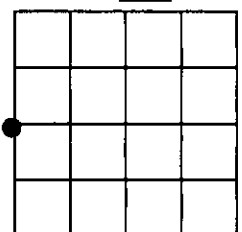
CARSTENS SURVEYING  
EMPLOYER

5940LS  
REG. NO.



OFFICE OF CLERK AND RECORDER COUNTY OF LINCOLN  
THIS "CORNER RECORD" WAS RECORDED 250571 BOOK: CCR CC&R'S PAGE: 12105 Pages: 1  
STATE OF MONTANA LINCOLN COUNTY  
AND IS ASSIGNED PAGE NO. RECORDED: 03/24/2014 11:30 KOI: CC&R'S  
TAMMY D. LAUER CLERK AND RECORDER  
FEE: \$0.00 BY: Gaume Deane  
COUNTY OFFICIAL FOR: CARSTENS LAND SURVEYING P.O. BOX 1374, POLSON, MONTANA  
CROSS INDEX NO. L-13 T. 27N , R. 28W , P.M.M.  
ADOPTED JULY 1, 1981, MONTANA BOARD OF PROFESSIONAL ENGINEERS & LAND SURVEYORS

SEC. 15



● CORNER THIS SHEET