

# CERTIFIED CORNER RECORDATION

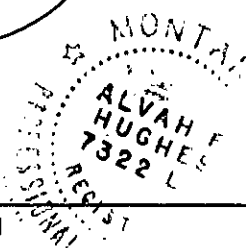
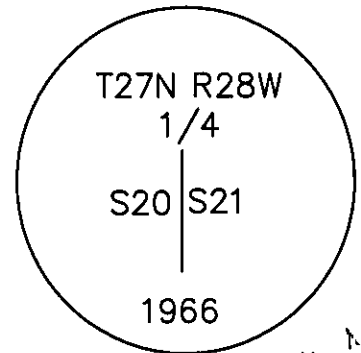
Corner E 1/4 S20 T 27 N. R. 28 W. P.M.M. Lincoln County

- I. Record:** 1902 original GLO survey by Burton S. Adams and William Weeks: Set a limestone 20x12x6 ins. 15 ins. in the ground, marked 1/4 on the W. face from which:
- A fir 6 ins. diam., bears N.60°15'E., 19 lks. dist., (12.54 ft.), mkd. 1/4 S21 BT.
  - A tamarack 14 ins. diam., bears S.25°W., 80 lks. dist., (52.80 ft.), mkd. 1/4 S20 BT.
- 1966 BLM Remonumentation by Damm: Set a iron post, 30 ins. long, 2 1/2 ins. diam., 24 ins. in the ground from which:
- Bury the original stone alongside and raise a mound of stone, 3 ft. base, 2 ft. high, W. of iron post.
- II. Found:** A 3 1/4 ins. diam., BLM brass cap on a 2 1/2 ins. diam. iron pipe firmly set from which:
- A T- Bar with a 1 inch diam. Aluminum disk (no markings, origin unknown) bears N.45°E., 0.18 ft. dist.
- III. Perpetuation:** No trees within limits, We establish 1 new bearing object described below:
- A steel post, bears S.35°W., 3.40 ft. dist., with attached Survey Monument and Property line stickers.

Magnetic declination: 18° East

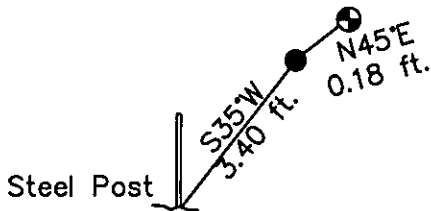
Equipment used: Hand compass and loggers tape

Note: Refer to Certificate of Survey No. 4106 Lincoln County Records for additional survey information.



Kootenai Surveyors Inc., 314 California Av., Libby, MT. 59923 (406) 293-4354

Lower Fritz - PCTC



SKETCH OF CORNER

CERTIFICATION

I, Kelly Rooney  
certify the information shown herein is true and correct.  
*Kelly Rooney*  
Signature Ground Party Chief

I, Alvah F. Hughes  
certify that this Corner Record correctly represents work performed by me or under my direction in compliance with the "Corner Recordation Act" (70-22-101, et seq., M.C.A.)  
*Alvah F. Hughes 7322 L*  
Signature of Surveyor & Seal

Date: 8/18/2011 Reg. No. 7322-LS  
 Employer: Kootenai Surveyors Inc.

Office of Clerk and Recorder, County of Lincoln This "corner

Sec. 20

record" was filed for record on \_\_\_\_\_

was noted on the cross STATE OF MONTANA LINCOLN COUNTY

book No. \_\_\_\_\_ RECORDED: 10/13/2011 3:35 KOI: CC&R'S

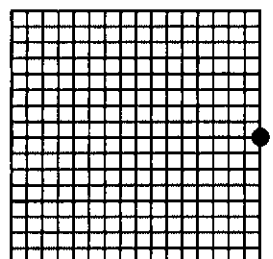
TAMMY D. LAUER CLERK AND RECORDER

FEE: \$0.00

BY: *Tammy D. Lauer*

TO: KOOTENAI SURVEYORS INC. P.O. BOX 393, LIBBY, MT 59923

Cross Index No. P 09 T. 27N R. 28W P.M., MT



• corner this sheet