

# CERTIFIED CORNER RECORDATION

Corner E1/16 Cor. S20 T. 27 N. R. 28 W. P.M.M. Lincoln County

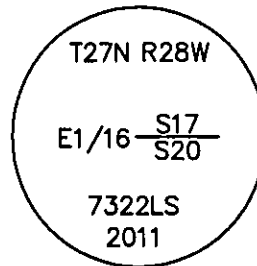
- I. Record: 1902 original GLO Subdivision of Township 27 North, Range 28 West by Burton S. Adams and William Weeks.
- II. Found: A T-bar with a 1 inch diameter Aluminum disk (unmarked and origin unknown).
- III. Perpetuation: At the corner point, determined by survey, set a 5/8 inch diam. steel rebar 24 ins. long, 23 ins. in the ground, with a 3 1/4 inch diam. Aluminum cap marked as shown below from which:

A larch, 8 ins. diam., bears North, 25.10 ft. dist., scribed E 1/16 S17 BT.  
 A fir, 10 ins. diam., bears S.2°W., 7.70 ft. dist., scribed E 1/16 S20 BT.  
 A T-bar bears S.65°E., 1.82 ft. dist.  
 A 6 ft. steel post, bears South on line 1.55 ft. dist.  
 A 6 ft. steel post, bears West on line 2.10 ft. dist.  
 Attach Survey Monument and Property Line stickers to both witness posts.

Painted faces and 6 in. wide red bands to all bearing trees and attached Land Survey Monument and Bearing Tree signs.

Magnetic declination: 18° East

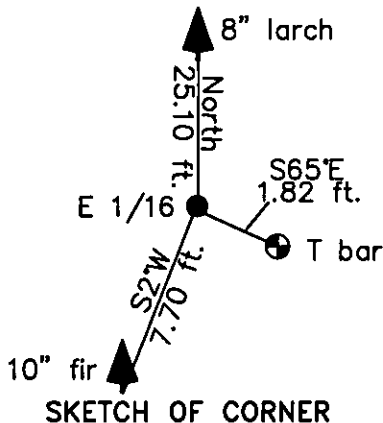
Equipment used: Hand compass and loggers tape



Note: Refer to Certificate of Survey No. 4106 Lincoln County Records for additional survey information.

Kootenai Surveyors Inc., 314 California Av., Libby, MT. 59923 (406) 293-4354

Lower Fritz - PCTC



CERTIFICATION  
 I, Kelly Rooney  
 certify the information shown herein is true and correct.  
Kelly Rooney  
 Signature Ground Party Chief  
 I, Alvah F. Hughes  
 certify that this Corner Record correctly represents work performed by me or under my direction in compliance with the "Corner Recordation Act" (70-22-101, et seq., M.C.A.)  
Alvah F. Hughes  
 Signature of Surveyor & Seal  
 Date: 8/11/2011 Reg. No. 7322-LS  
 Employer: Kootenai Surveyors Inc.

Office of Clerk and Recorder, County of Lincoln This "corner

record" was filed for record on \_\_\_\_\_

235239 BOOK: CCR CC&R'S PAGE: 11918 Pages: 1

was noted on the crSTATE OF MONTANA LINCOLN COUNTY

book No. \_\_\_\_\_ RECORDED: 10/13/2011 3:30 KOI: CC&R'S

TAMMY D. LAUER CLERK AND RECORDER

FEE: \$0.00

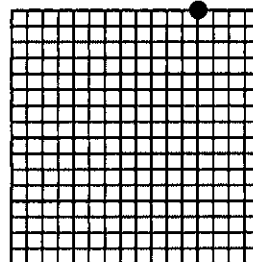
BY: Glennie Dean's Deputy

TO: KOOTENAI SURVEYORS INC. P.O. BOX 393, LIBBY, MT 59923

Cross Index No. N 08 T. 27N R. 28W P.M., MT

Adopted July 1, 1981, Montana Board of Professional Engineers & Land Surveyors

Sec. 20



• corner this sheet