

CERTIFIED CORNER RECORDATION

Corner NE Cor. S20 T. 27 N. R. 28 W. P.M.M. LINCOLN County

I. Record: 1902 original GLO survey by Burton S. Adams and William Weeks set a slate stone 24x12x6 ins., 18 ins. in the ground, marked with 4 notches on the E. edge and 3 notches on the S. edge from which:

A pine, 20 ins. diam., bears N48°E., 60 lks. (39.60 ft), mkd. T27N R28W S16 BT.
A fir, 18 ins. diam., bears S63°30'E., 66 lks. (43.56 ft), mkd. T27N R28W S21 BT.
A fir, 10 ins. diam. bears S27°W., 21 lks. (13.86 ft), mkd. T27N R28W S20 BT.
A fir, 10 ins. diam., bears N41°30'W., 14 lks (9.24 ft), mkd. T27N R28W S17 BT.

1966 BLM Remoumentation by Damm: Set an iron post, 30 ins. long, 2 1/2 ins. diam., 24 ins. in the ground, with brass cap mkd. as shown below from which:

A tamarack, 8 ins. diam., bears N.24°E., 52 lks. dist. (34.32 ft.) mkd. T27N R28W S16 BT.
A fir, 4 ins. diam., bears S.49°E., 15 lks. dist., (9.90 ft.) mkd. X BT.
A tamarack, 4 ins. diam., bears S.59°W., 35 lks. dist., (23.10 ft.) mkd. X BT.
A fir, 14 ins. diam., bears N.41°30'W., 14 lks. dist., (9.24 ft.) with overgrown blaze.

II. Found: A 3 1/4 diam. BLM brass cap on a 2 1/2 in. diam. iron pipe firmly set from which:

A larch, 6 ins. diam., bears S.17°E., 64.20 ft. dist., with with visible scribing.
A fir, 21 ins. diam., bears N.41°W., 9.50 ft. dist., with overgrown face.
A fir, 15 ins. diam., bears N.77°E., 34.00 ft. dist., with visible scribing.

III. Perpetuation: We established 1 bearing tree described below:

A fir, 4 ins. diam., bears S.3°W., 27.00 ft. dist., mkd. X BT.

Set a steel post on line 3 ft. South of found monument with attached Land Survey Monument and Property Line stickers.

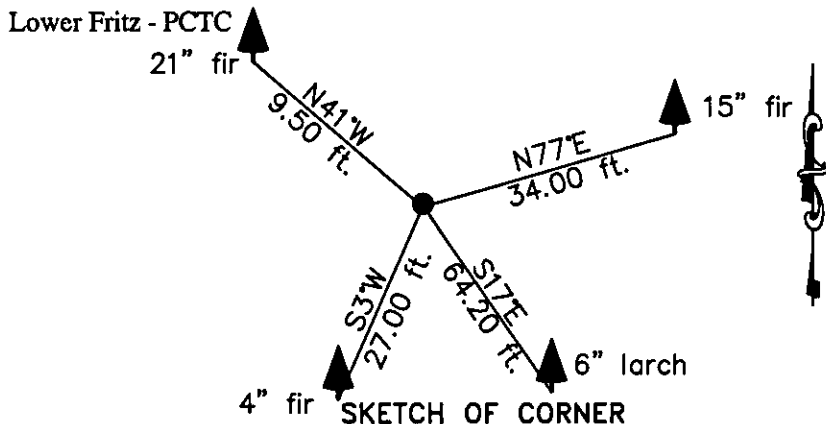
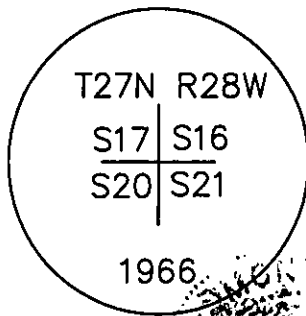
Painted faces and 6 in. wide red bands to all bearing trees and attached bearing tree and Land Survey Monument signs.

Magnetic declination: 18° East

Equipment used: Hand compass and loggers tape

Note: Refer to Certificate of Survey No. 4106 Lincoln County Records for additional survey information.

Kootenai Surveyors Inc., 314 California Av., Libby, MT. 59923 (406) 293-4354



CERTIFICATION
I, Kelly Rooney
certify the information shown herein is true and correct.
Kelly Rooney
Signature Ground Party Chief
I, Alvah F. Hughes
certify that this Corner Record correctly represents work performed by me or under my direction in compliance with the "Corner Recordation Act" (70-22-101, et seq., M.C.A.)
Alvah F. Hughes
Signature of Surveyor & Seal
Date: 8/18/2011 Reg. No. 7322-LS
Employer: Kootenai Surveyors Inc.

Office of Clerk and Recorder, County of Lincoln This "corner

record" was filed for record on 235236 BOOK: CCR CC&R'S PAGE: 11915 Pages: 1

was noted on the crosSTATE OF MONTANA LINCOLN COUNTY

book No. RECORDED: 10/13/2011 3:25 KOI: CC&R'S

TAMMY D. LAUER CLERK AND RECORDER

FEE: \$0.00

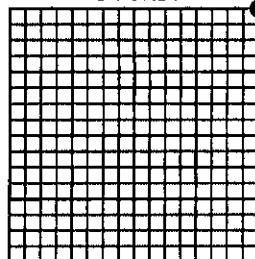
BY: Deanne Lauer Deputy

TO: KOOTENAI SURVEYORS INC. P.O. BOX 393, LIBBY, MT 59923

Cross Index No. N 09 T. 27N R. 28W P.M., MT

Adopted July 1, 1981, Montana Board of Professional Engineers & Land Surveyors

Sec.20



• corner this sheet

CERTIFIED CORNER RECORDATION

Corner NE1/16 Cor. S20 T. 27 N. R. 28 W. P.M.M. Lincoln County

- I. Record: 1902 original GLO Subdivision of Township 27 North, Range 28 West by Burton S. Adams and William Weeks.
- II. Found: A field search found no monuments.
- III. Perpetuation: At the corner point, determined by survey, set a 5/8 inch diam. steel rebar 24 ins. long, 23 ins. in the ground, with a 3 1/4 inch diam. Aluminum cap marked as shown below from which:

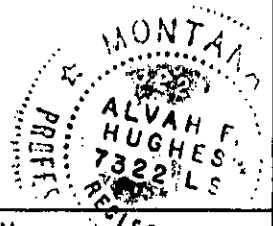
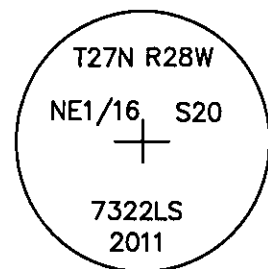
A pine, 9 ins. diam., bears S.34°W., 9.90 ft. dist., scribed NE 1/16 S20 BT.
A pine, 12 ins. diam., bears N.26°W., 26.10 ft. dist., scribed NE 1/16 S20 BT.
A 6 ft. steel post, bears North on line 1.35 ft. dist.
A 6 ft. steel post, bears East on line 2.60 ft. dist.
Attach Survey Monument and Property Line stickers to both witness posts.

Painted faces and 6 in. wide red bands to all bearing trees and attached Land Survey Monument and Bearing Tree signs.

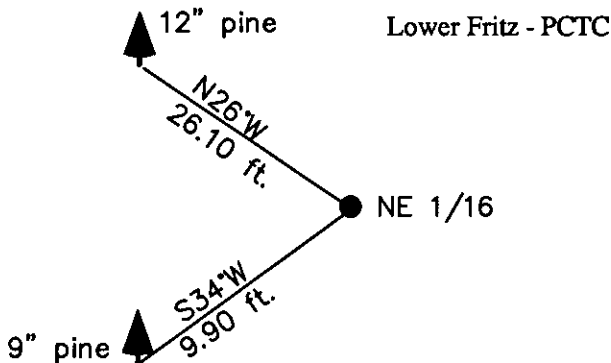
Magnetic declination: 18° East

Equipment used: Hand compass and loggers tape

Note: Refer to Certificate of Survey No. 4106 Lincoln County Records for additional survey information.



Kootenai Surveyors Inc., 314 California Av., Libby, MT. 59923 (406) 293-4354



SKETCH OF CORNER

CERTIFICATION
I, Kelly Rooney
certify the information shown herein is true and correct.
Kelly Rooney
Signature Ground Party Chief
I, Alvah F. Hughes
certify that this Corner Record correctly represents work performed by me or under my direction in compliance with the "Corner Recordation Act" (70-22-101, et seq., M.C.A.)
Alvah F. Hughes
Signature of Surveyor & Seal
Date: 8/11/2011 Reg. No. 7322-LS
Employer: Kootenai Surveyors Inc.

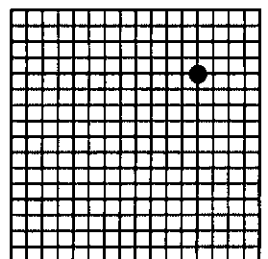
Office of Clerk and Recorder, County of Lincoln This "corner

Sec. 20

record" was filed for r 235237 BOOK: CCR CC&R'S PAGE: 11916 Pages: 1
was noted on the cro STATE OF MONTANA LINCOLN COUNTY
book No. RECORDED: 10/13/2011 3:27 KOI: CC&R'S
TAMMY D. LAUER CLERK AND RECORDER
FEE: \$0.00 BY: Deanne Dean Deputy
TO: KOOTENAI SURVEYORS INC. P.O. BOX 393, LIBBY, MT 59923

Cross Index No. 0 08 T. 27N R. 28W P.M., MT

Adopted July 1, 1981, Montana Board of Professional Engineers & Land Surveyors



• corner this sheet