

CERTIFIED CORNER RECORDATION

Corner S 1/4 S20 T. 27 N. R. 28 W. P.M.M. Lincoln County

I. Record: 1902 original GLO survey by Burton S. Adams and William Weeks: Set a limestone, 15x12x8 ins., 10 ins. in the ground, marked 1/4 on the N face from which:

A fir, 8 ins. diam., bears S.2°E., 10 lks. dist., (6.60 ft.), mkd. 1/4 S29 BT.
A fir, 8 ins. diam., bears N.58°W., 14 lks. dist., (9.24 ft.), mkd. 1/4 S20 BT.

1966 BLM Remonumentation by Damm: Set a iron post, 30 ins. long, 2 1/2 ins. diam., 24 ins. in the ground, with brass cap from which:

A fir, 14 ins. diam., bears N.17°E., 81 lks. dist., (53.46 ft.) mkd. 1/4 S20 BT.

II. Found: A 3 1/4 ins. diam. BLM brass cap on a 2 1/2 in. diam. iron pipe firmly set, and marked as shown below:

III. Perpetuation: We establish 2 new bearing trees described below:

A pine, 9 ins. diam., bears S.45°E., 31.20 ft. dist. mkd. 1/4 S29 BT.
A pine, 11 ins. diam., bears N.26°W., 35.70 ft. dist., mkd. 1/4 S20 BT.

Painted faces and 6 in. wide red bands to all bearing trees and attached Land Survey Monument and Bearing Tree signs.

Set a steel post, bears N.30°E., 1.45 ft. dist., with attached Land Survey Monument and Property line stickers.

Magnetic declination: 18° East

Equipment used: Hand compass and loggers tape

Note: Refer to Certificate of Survey No. 4106 Lincoln County Records for additional survey information.

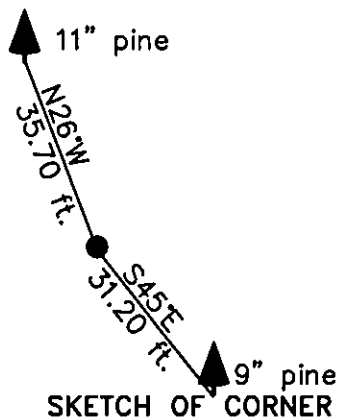
T27N R28W

1/4 $\frac{S20}{S29}$

1966

Kootenai Surveyors Inc., 314 California Av., Libby, MT. 59923 (406) 293-4354

Lower Fritz - PCTC



CERTIFICATION

kelly Rooney

I certify the information shown herein is true and correct.

Kelly Rooney

Signature Ground Party Chief

Alvah F. Hughes

I certify that this Corner Record correctly represents work performed by me or under my direction in compliance with the "Corner Recordation Act" (70-22-101, et seq., M.C.A.)

Alvah F. Hughes

Signature of Surveyor & Seal

Date: 8/11/2011 Reg. No. 7322-LS

Employer: Kootenai Surveyors Inc.

Office of Clerk and Recorder, County of Lincoln This "corner

Sec. 20

record" was filed for record on _____

235234 BOOK: CCR CC&R'S PAGE: 11913 Pages: 1

was noted on the croSTATE OF MONTANA LINCOLN COUNTY

book No. _____ RECORDED: 10/13/2011 3:22 KOI: CC&R'S

TAMMY D. LAUER CLERK AND RECORDER

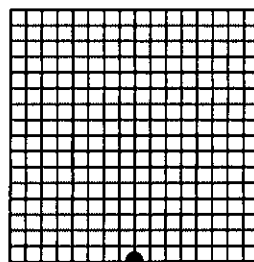
FEE: \$0.00

BY: *Tammy D. Lauer*

TO: KOOTENAI SURVEYORS INC. P.O. BOX 393, LIBBY, MT 59923

Cross Index No. R 07 T. 27N R. 28W P.M., MT

Adopted July 1, 1981, Montana Board of Professional Engineers & Land Surveyors



• corner this sheet