

CERTIFIED CORNER RECORDATION

Corner N 1/4 S20 T. 27 N. R. 28 W. P.M.M. Lincoln County

I. Record: 1902 original GLO survey by Burton S. Adams and William Weeks: Set a limestone, 15x12x10 ins., 10 ins. in the ground, marked 1/4 on the N face from which:

A fir, 12 ins. diam., bears S.6°15'E., 49 lks. dist., (32.34 ft.), mkd. 1/4 S20 BT.
A fir, 8 ins. diam., bears N.55°30'W., 40 lks. dist., (26.40 ft.), mkd. 1/4 S17 BT.

1966 BLM Remonumentation by Damm: Set a iron post, 30 ins. long, 2 1/2 ins. diam., 24 ins. in the ground, with brass cap from which:

A fir, 14 ins. diam., bears N.55°30'W., 40 lks. dist., (26.40 ft.) with visible scribed face.
A fir, 26 ins. diam., bears N.38°E., 36 lks. dist., (23.76 ft.) with overgrown face.

II. Found: A 3 1/4 ins. diam. BLM brass cap on a 2 1/2 in. diam. iron pipe firmly set, and marked as shown below from which:

A fir, 26 ins. diam., bears N.36°E., 24.60 ft. dist., with overgrown face.
A fir, 14 ins. diam., bears N.56°W., 41.10 ft. dist., with visible scribed face.

III. Perpetuation:

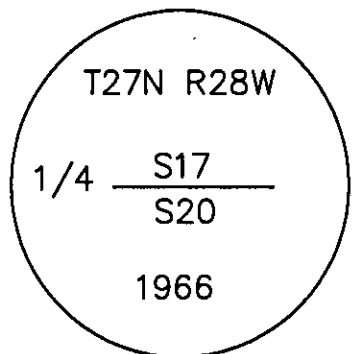
Painted faces and 6 in. wide red bands to all bearing trees and attached Land Survey Monument and Bearing Tree signs.

Set a steel post on line 3 ft. West of corner, with attached Land Survey Monument and Property line stickers.

Magnetic declination: 18° East

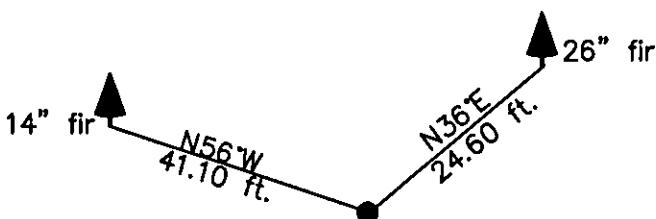
Equipment used: Hand compass and loggers tape

Note: Refer to Certificate of Survey No. 4106 Lincoln County Records for additional survey information.



Kootenai Surveyors Inc., 314 California Av., Libby, MT. 59923 (406) 293-4354

Lower Fritz - PCTC



SKETCH OF CORNER

CERTIFICATION

I, kelly Rooney
certify the information shown herein is true and correct.
Kelly Rooney
Signature Ground Party Chief
I, Alvah F. Hughes
certify that this Corner Record correctly represents work performed by me or under my direction in compliance with the "Corner Recordation Act" (70-22-101, et seq., M.C.A.)
Alvah F. Hughes
Signature of Surveyor & Seal
Date: 8/11/2011 Reg. No. 7322-LS
Employer: Kootenai Surveyors Inc.

Office of Clerk and Recorder, County of Lincoln This "corner

Sec. 20

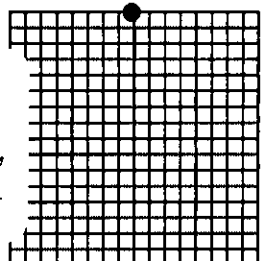
record" was filed for record on _____

235233 BOOK: CCR CC&R'S PAGE: 11912 Pages: 1
was noted on the cross-index p/STATE OF MONTANA LINCOLN COUNTY
book No. _____ RECORDED: 10/13/2011 3:20 KOI: CC&R'S
TAMMY D. LAUER CLERK AND RECORDER

FEE: \$0.00 BY: Leanne Lauer
TO: KOOTENAI SURVEYORS INC. P.O. BOX 393, LIBBY, MT 59923

Cross Index No. N 07 T. 27N R. 28W P.M., MT

Adopted July 1, 1981, Montana Board of Professional Engineers & Land Surveyors



• corner this sheet