

CERTIFIED CORNER RECORDATION

Corner N 1/4 S19 T. 27 N. R. 28 W. P.M.M. Lincoln County

I. Record: 1902 original GLO survey by Burton S. Adams and William Weeks: Set a limestone, 20x10x6 ins., 15 ins. in the ground, marked 1/4 on the N face from which:

A fir, 14 ins. diam., bears N.80°15'E., 14 lks. dist., (9.24 ft.), mkd. 1/4 S18 BT.
A fir, 12 ins. diam., bears S.48°30'W., 50 lks. dist., (33.00 ft.), mkd. 1/4 S19 BT.

1982 BLM Remonumentation by Almanza: Set a aluminum post, 30 ins. long, 2 1/2 ins. diam., 22 ins. in the ground, with aluminum cap from which:

A fir, 16 ins. diam., bears N.80°15'E., 14 lks. dist., (9.24 ft.) with visible scribes..
A fir, 14 ins. diam., bears S.48°30'W., 50 lks. dist., (33.00 ft.) with overgrown face.

II. Found: A 3 1/4 ins. diam. BLM aluminum cap on a 2 1/2 in. diam. aluminum pipe firmly set, and marked as shown below from which:

A fir, 10 ins. diam., bears S.30°W., 8.77 ft. dist., with visible scribed face.
A fir, 17 ins. diam., bears N.80°E. 10.10 ft. dist., with visible scribed face.
A fir, 18 ins. diam., bears S.48°W., 32.05 ft. dist., with healed face.

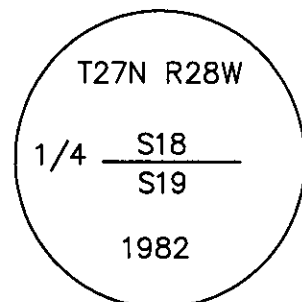
III. Perpetuation:

Painted faces and 6 in. wide red bands to all bearing trees and attached Land Survey Monument and Bearing Tree signs.

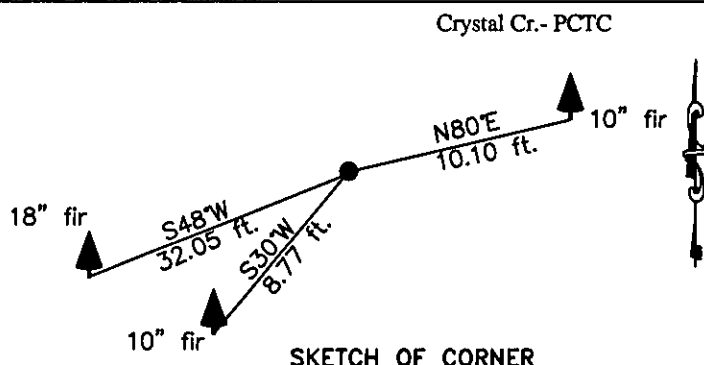
Set a steel post on line 3 ft. East of corner, with attached Land Survey Monument and Property line stickers.

Magnetic declination: 18° East

Equipment used: Hand compass and loggers tape



Kootenai Surveyors Inc., 314 California Av., Libby, MT. 59923 (406) 293-4354



SKETCH OF CORNER

CERTIFICATION
I, Kelly Rooney
certify the information shown herein is true and correct.
Kelly Rooney
Signature Ground Party Chief
I, Alvah F. Hughes
certify that this Corner Record correctly represents work performed by me or under my direction in compliance with the "Corner Recordation Act" (70-22-01, et seq., M.C.A.)
Alvah F. Hughes
Signature of Surveyor & Seal
Date: 6/30/2008 Reg. No. 7322-LS
Employer: Kootenai Surveyors Inc.

Office of Clerk and Recorder, County of Lincoln This "corner record" was 213032 BOOK: CCR CC&R'S PAGE: 11240 Pages: 1 was noted STATE OF MONTANA LINCOLN COUNTY RECORDED: 07/23/2008 9:35 KOI: CC&R'S book No. TAMMY D. LAUER CLERK AND RECORDER FEE: \$0.00 BY: [Signature] TO: KOOTENAI SURVEYORS INC. P.O. BOX 393, LIBBY, MT 59923

Cross Index No. N 03 T. 27N R. 28W P.M., MT

Adopted July 1, 1981, Montana Board of Professional Engineers & Land Surveyors

