

CERTIFIED CORNER RECORDATION

Corner Northeast Corner, Section 15 T. 27 N. R. 28 W. P.M.M. Lincoln County

1902 Original General Land Office record by Burton S. Adams and William C. Weeks, Book 4280 Page 38:

"Set a granite stone, 15 x 12 x 10 ins., 10 ins. in the ground, for cor. of secs. 10, 11, 14 and 15 marked with 4 notches on S. and 2 notches on E., edges; from which

A fir, 10 ins. diam. bears N. 37°15' E, 44 lks. dist., marked T27N. R28W, S 11 BT.

A tamarack, 10 ins. diam. bears S. 54°30' E, 62 lks. dist., marked T27N. R28W, S14 BT.

A fir, 8 ins. diam. bears S. 66°30' W, 12 lks. dist., marked T27N. R28W, S 15 BT.

A tamarack, 24 ins. diam. bears N. 30°45' W, 32 lks. dist., marked T27N. R28W, S10 BT."

2008 remonumentation by Michael J. Drenth 10684LS:

Found no sign of the original General Land Office stone. Monument believed to have been removed by logging activity. Found the remains of three original General Land Office bearing tree stumps.

At the record distance intersection of the three original bearing tree stumps, I set an aluminum pipe, 2 1/2 inches diameter, 30 inches long, 24 inches in the ground, with a 3 1/4 inch diameter aluminum cap marked as shown and set in a 4 foot diameter stone collar. I set a memorial, a bridge spike, 10 inches long, 24 inches in the ground, below the pipe. From which the original bearing tree stumps:

A Douglas fir stump, 16 inches diameter, bears N. 36 1/2° E., 29.0 feet distant

A Douglas fir stump, 12 inches diameter, bears S. 64° W., 7.9 feet distant

A larch stump, 35 inches diameter, bears N. 30° W., 21.1 feet distant with visible scribing on stump and 8 foot long log butt section northeast of corner at base of slope.

and from which I establish four new bearing trees:

A larch, 5 inches diameter, bears N. 41 1/2° E., 63.0 feet distant, scribed "X" and "BT".

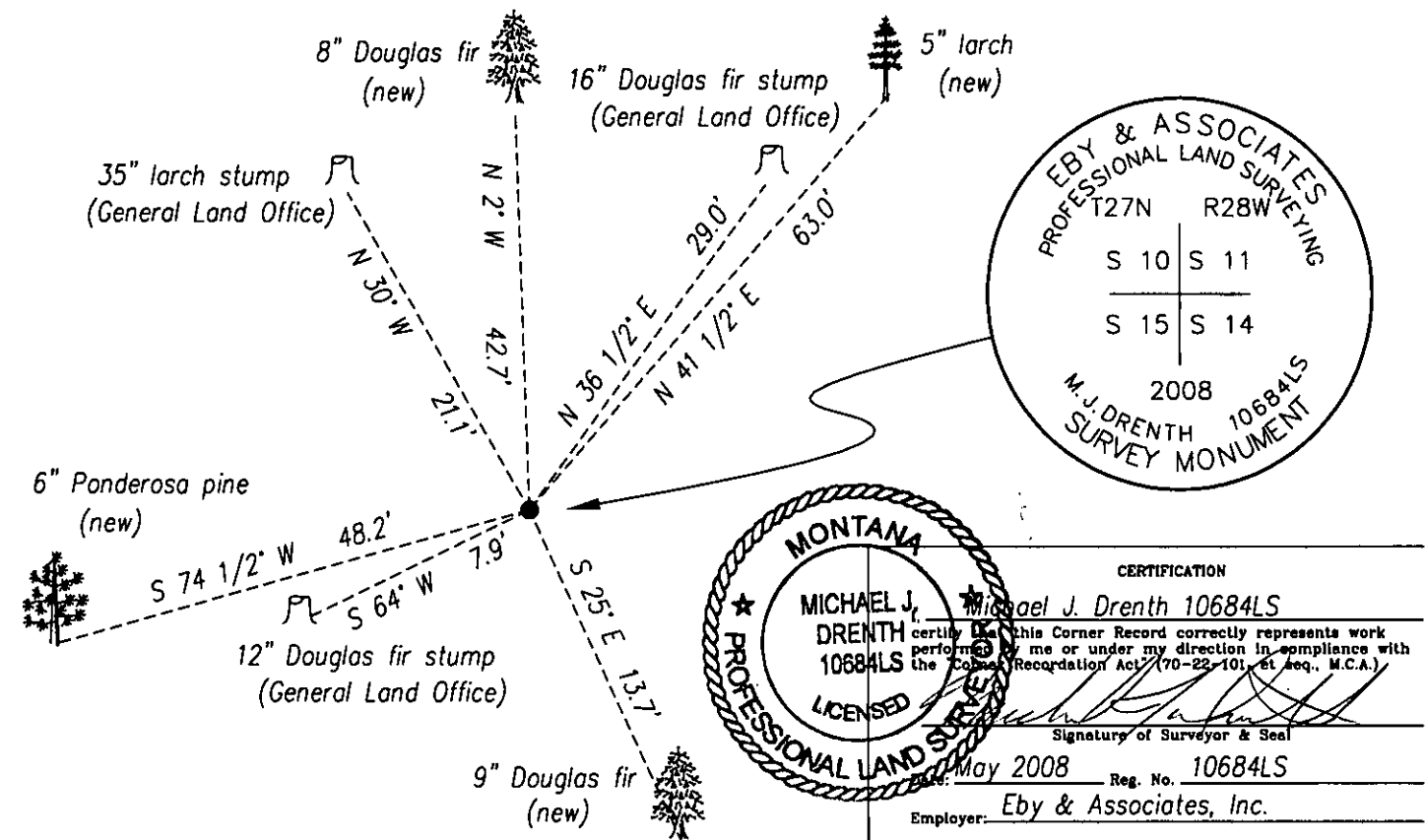
A Douglas fir, 9 inches diameter, bears S. 25° E., 13.7 feet distant, scribed "T27N R28W S14 BT".

A Ponderosa pine, 6 inches diameter, bears S. 74 1/2° W., 48.2 feet distant, scribed "X" and "BT".

A Douglas fir, 8 inches diameter, bears N. 2° W., 42.7 feet distant, scribed "T27N R28W S10 BT".

I axe snow blazes and attach Land Survey Monument signs to both trees.

All bearings and distances measured with total station instrument, geodetic north.



Office of Clerk and Recorder, County of Lincoln. This "corner

record" was filed for record 212180 BOOK: CCR CC&R'S PAGE: 11219 Pages: 1

STATE OF MONTANA LINCOLN COUNTY

was noted on the cross-index RECORDED: 06/18/2008 11:05 KOI: CC&R'S

book No. TAMMY D. LAUER CLERK AND RECORDER

FEE: \$0.00

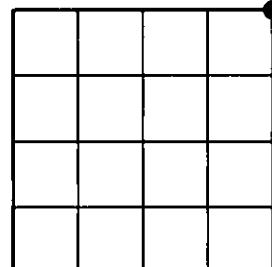
BY: *Heather Lauer*

TO: EBY & ASSOCIATES P.O. BOX 7144, KALISPELL, MT 59904

Cross Index No. J - 17 T. 27N R. 28W PMM

Adopted July 1, 1981, Montana Board of Professional Engineers & Land Surveyors

Sec. 15



• corner this sheet