

CERTIFIED CORNER RECORDATION

Corner North Quarter Corner, Section 14 T. 27 N. R. 28 W. P.M.M. Lincoln County

1902 Original General Land Office record by Burton S. Adams and William C. Weeks, Book 4280 Page 39:

"Set a limestone, 15 x 12 x 8 ins., 10 ins. in the ground, for 1-4 sec. cor. marked 1-4 on N. face; from which

A fir, 10 ins. diam. bears S. 47° E., 34 lks. dist. marked 1-4 S. 14 BT.

A fir, 28 ins. diam. bears N. 33°45' W., 39 lks. dist. marked 1-4 S. 11 BT."

2008 remonumentation by Michael J. Drenth 10684LS:

Found original General Land Office stone, 13 x 9 x 5 inches, 9 inches in the ground, with "1/4" chiseled on the north face. From which:

A Douglas fir stump, 13 inches diameter, bears S. 47° E., 23.0 feet distance, with visible scribing "BT" and visible reverse scribing on overgrowth remains.

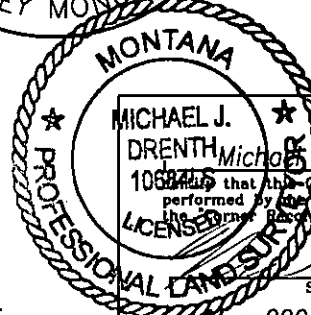
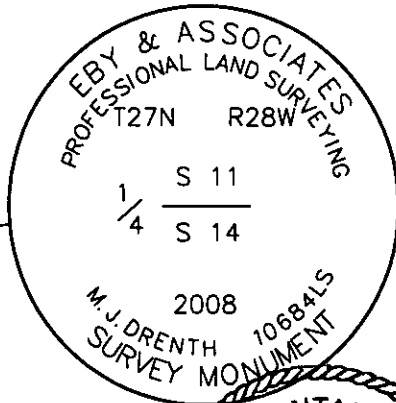
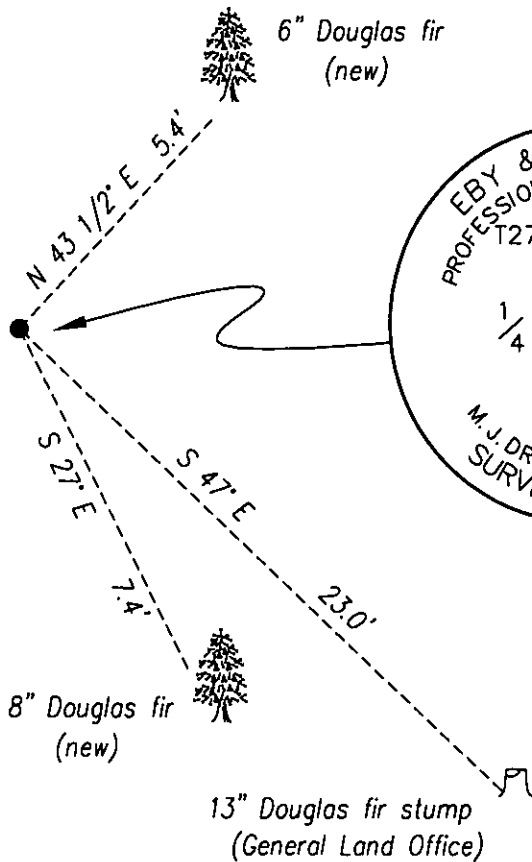
In the position of the original General Land Office stone, I set an aluminum pipe, 2 1/2 inches diameter, 30 inches long, 21 inches in the ground, with a 3 1/4 inch diameter aluminum cap marked as shown and set in a 2-foot diameter stone collar. I set a memorial, a bridge spike, 10 inches long, 21 inches in the ground, below the pipe monument. From which I establish 2 new bearing trees:

A Douglas fir, 6 inches diameter, bears N. 43 1/2° E., 5.4 feet distant, scribed "1/4 S 11 BT".

A Douglas fir, 8 inches diameter, bears S. 27° E., 7.4 feet distant, scribed "1/4 S 14 BT".

I axe snow blazes and attach Land Survey Monument signs to both trees.

All bearings and distances measured with total station instrument, geodetic north.



CERTIFICATION	
MICHAEL J. DRENTH	Drenth 10684LS
I certify that the Corner Record correctly represents work performed by me or under my direction in compliance with the "Corner Recordation Act" (28-22-101 et seq., M.C.A.)	
Signature of Surveyor & Seal	
Date: May 2008	Reg. No. 10684LS
Employer: Eby & Associates, Inc.	

Office of Clerk and Recorder, County of Lincoln. This "corner

record" was filed for record, 212179 BOOK: CCR CC&R'S PAGE: 11218 Pages: 1

was noted on the cross-index, STATE OF MONTANA LINCOLN COUNTY RECORDED: 06/18/2008 11:00 KOI: CC&R'S

book No. _____ TAMMY D. LAUER CLERK AND RECORDER

FEE: \$0.00 BY: *Tammy D. Lauer*
TO: EBY & ASSOCIATES P.O. BOX 7144, KALISPELL, MT 59904

Cross Index No. J - 19 T. 27N R. 28W PMM

Adopted July 1, 1981, Montana Board of Professional Engineers & Land Surveyors

Sec. 14

	●		

• corner this sheet