

## INSTRUCTIONS

1. Original and/or subsequent record used to evaluate the corner position.
2. Description of evidence found, note discrepancies in the record, state method of establishing lost or obliterated corners.
3. Description of monument and accessories set to perpetuate the corner position.
4. Sketch of corner, show all pertinent data which can best be shown in a sketch example, corner marking, topography ties, position of accessories, etc.
5. Certification must be signed and sealed by Land Surveyor registered in the State of Montana.
6. Fill in Cross Index & Section Diagram at bottom of sheet.

## CERTIFIED CORNER RECORDATION

Corner S1/4 SEC. 22 T. 28N R. 27W P.M.M. Flathead County

**ORIGINAL GLO – Newton Orr - 1891:**

Set a limestone, 2x10x8 inches, 8 inches in the ground for 1/4 Section corner marked 1/4 on north face; from which:  
 A tamarack, 7 inches diameter, bears S19°W, 20 links (13.2 feet) distant marked "1/4 S BT"  
 A pine, 6 inches diameter, bears S79°E, 5 links (3.3 feet) distant marked "1/4 S BT"

**Goacher – 1999**

Found 5' standing snag with adjacent blow down, scribing visible, leaning east. Stone not found.  
 Set 5/8" x 24" rebar with 3/4" aluminum cap from found BT in southwest; from which:  
 A 10" pine bears N52°E, 21.5' distant, blaze and scribe "RM".  
 An 8" pine bears S32°E, 31.3' distant, blaze and scribe "RM".  
 Bearing tree tags attached and blazes painted red.

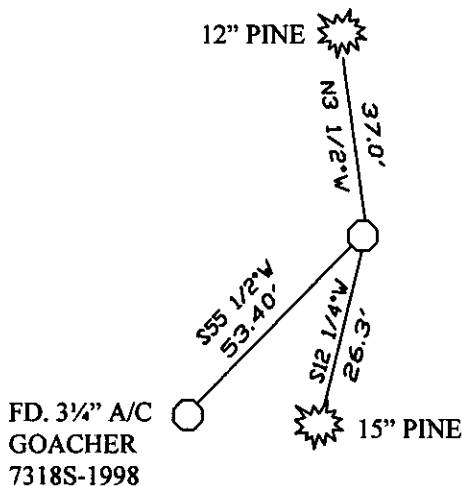
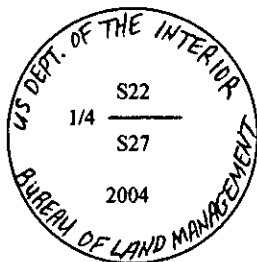
**BLM – 2004**

Found original stone. Set brass cap in place of found stone, marked as shown below on 2" iron pipe, flush with ground; from which:  
 A 12" pine bears N2°W, 37.0 feet distant, marked "1/4 S22 BT".  
 A 15" pine bears S14°W, 26.5 feet distant, marked "1/4 S27 BT".  
 Buried found stone along north side of monument.

**FOUND:**

Found and accepted a 3/4" BLM brass cap on 2" iron pipe, flush with ground, from which:  
 A 12" pine with visible scribing bears N3 1/2°E, 36.7 feet distant with bearing tree tag marked S2°E, 37.0', BLM 10/04.  
 A 15" pine with visible scribing bears S12 1/4°W, 26.2 feet distant with bearing tree tag marked N14°E, 26.5', BLM 10/04.

Found and did not accept a 3/4" aluminum cap on a 5/8" rebar stamped "Goacher 7318S" dated 1998, from which:  
 A 10" pine with visible scribing bears N52°E, 21.4 feet distant with bearing tree tag with no information.  
 An 11" pine with visible scribing bears S32°E, 31.1 feet distant with bearing tree tag with no information.  
 A 30" pine stump with visible scribing "BT" bears S10 1/2°W, 12.6 feet distant.



SKETCH OF CORNER

## CERTIFICATION

I, Stephen Jeske  
 Certify the information shown herein is true and correct.

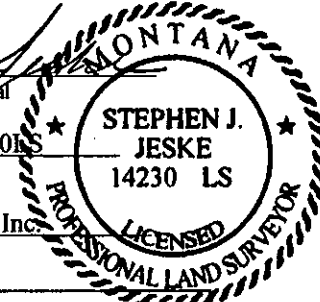
Stephen Jeske  
 Signature Ground Party Chief

I, Stephen Jeske  
 certify that this Corner Record correctly represents work performed by me or under my direction in compliance with the "Corner Recordation Act" (70-22-18, et seq., M.C.A.)

Stephen Jeske  
 Signature of Surveyor & Seal

Date: 05-27-08 Reg. No. 14230LS

Employer: J.R.S. Surveying, Inc.



Office of Clerk and Recorder, County of \_\_\_\_\_ This "corner

record" was filed for record on 211735 BOOK: CCR CC&R'S PAGE: 11215 Pages: 1

was noted on the cross-index plat STATE OF MONTANA LINCOLN COUNTY

book no. \_\_\_\_\_

RECORDED: 05/29/2008 10:38 KOI: CC&R'S

TAMMY D. LAUER CLERK AND RECORDER

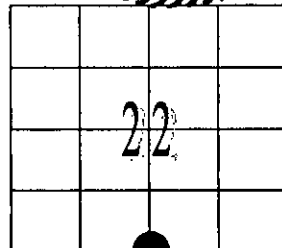
FEE: \$0.00

BY

TO: J.R.S. SURVEYING P.O. BOX 1050, LIBBY, MONTANA 59923

Cross Index No. R15 T. 28N R. 27W PMM

Adopted July 1, 1981, Montana Board of Professional Engineers & Land Surveyors



• - Corner this sheet