

CERTIFIED CORNER RECORDATION

Corner West Quarter Corner, Section 14 T. 27 N. R. 28 W. P.M.M. Lincoln County
East Quarter Corner, Section 15

1902 Original General Land Office record by Burton S. Adams and William C. Weeks, Book 4280 Page 38:
"Set a granite stone, 15 x 12 x 8 ins., 10 ins. in the ground, for 1-4 sec. cor. marked 1-4 on W. face;
from which

- A fir, 9 ins. diam. bears S. 43°45' E., 11 lks. dist. marked 1-4 S. 14 BT.
- A fir, 10 ins. diam. bears S. 23°W., 13 lks. dist. marked 1-4 S. 15 BT."

2007 remonumentation by Michael J. Drenth 10684LS:

Found original General Land Office stone, 13 x 10 x 6 inches, 9 inches in the ground, with "1/4" chiseled on the west face. From which:

A rotted Douglas fir stump, 10 inches diameter, bears S. 40° E., 7.1 feet distant.

In the position of the original General Land Office stone monument, I set an aluminum pipe, 2 1/2 inches diameter, 30 inches long, 27 inches in the ground, with a 3 1/4 inch diameter aluminum cap, marked as shown, in a 3 foot diameter stone collar.

I set a memorial, a railroad spike, 6 inches long, 27 inches in the ground, below the pipe monument.

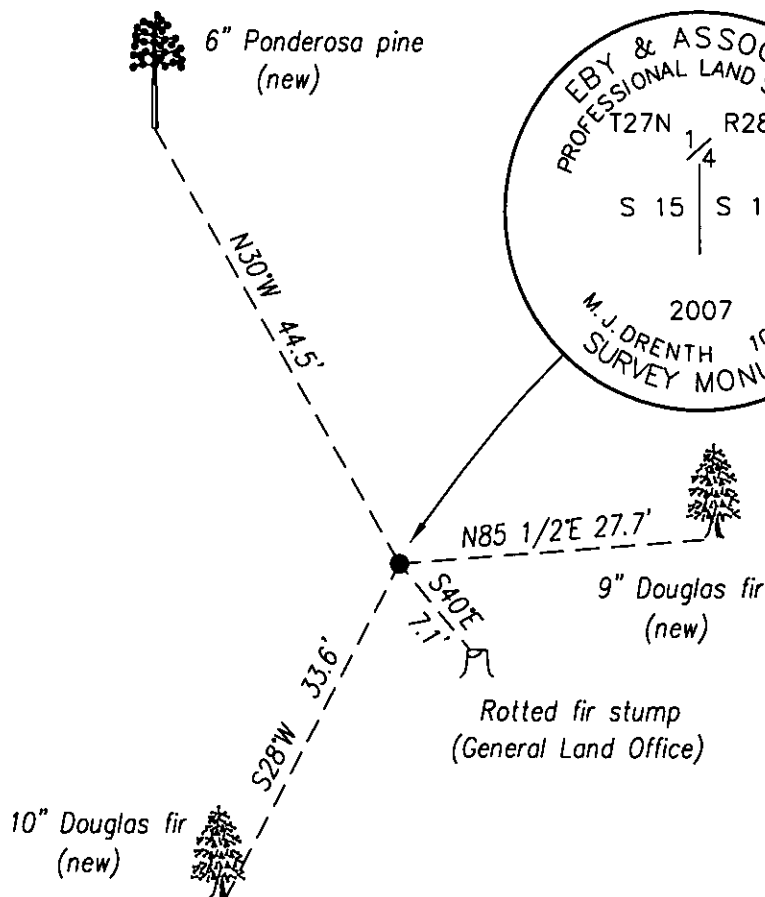
From which I establish 3 new bearing trees:

- A Douglas fir, 9 inches diameter, bears N. 85 1/2°E., 27.7 feet distant, scribed "1/4 S 14 BT".
- A Douglas fir, 10 inches diameter, bears S. 28° W., 33.6 feet distant, scribed "1/4 S 15 BT".
- A Ponderosa pine, 6 inches diameter, bears N. 30° W., 44.5 feet distant, scribed "X" and "BT".

I axe snow blazes, paint the blazes and faces red, and attach Land Survey Monument signs on all trees.

All bearings and distances measured with steel tape and hand-held compass, declination 17° East.

I bury the original stone upsidedown along the west side of the new aluminum pipe.



CERTIFICATION	
I, <u>Corryn Greenawalt</u>	
certify the information shown herein is true and correct.	
<u>Corryn Greenawalt</u>	
Signature Ground Party Chief	
I, <u>Michael J. Drenth 10684LS</u>	
certify that this Corner Record correctly represents work	
performed by me or under my direction in compliance with	
the "Corner Recordation Act" (70-22-101, et seq., M.C.A.)	
<u>MICHAEL J. DRENTH</u>	
Signature of Surveyor & Seal	
10684LS	
Date: <u>April 2007</u>	Reg. No. <u>10684LS</u>
Employer: <u>EBY & Associates, Inc.</u>	

Office of Clerk and Recorder, County of Lincoln . This "corner

record" was filed for record

202977 BOOK: CCR CC&R'S PAGE: 11066 Pages: 1

was noted on the cross-index

STATE OF MONTANA LINCOLN COUNTY

RECORDED: 05/16/2007 12:35 KOI: CC&R'S

book No. _____

TAMMY D. LAUER CLERK AND RECORDER

FEE: \$0.00

BY Leanne Drenth

TO: EBY & ASSOCIATES P.O. BOX 7144, KALISPELL, MT 59904

Cross Index No. L - 17 T. 27N R. 28W PMM

Adopted July 1, 1981, Montana Board of Professional Engineers & Land Surveyors

Sec. 14

• corner this sheet