

# CERTIFIED CORNER RECORDATION

Corner Northwest Corner, Section 13 T. 27 N. R. 28 W. P.M.M. Lincoln County

1902 Original General Land Office record by Burton S. Adams and William C. Weeks, Book 4280 Page 17:

"Set a limestone, 18 x 12 x 5 ins., 12 ins. in the ground, for cor. of secs. 11, 12, 13 and 14 marked with 4 notches on S. and 1 notch on E. edges; from which

- A pine, 24 ins. diam. bears N. 32°45' E., 14 lks. dist. marked T 27 N. R 28 W. S 12 BT.
- A tamarack, 12 ins. diam., bears S. 7°45' E., 66 lks. dist. marked T 27 N. R 28 W. S 13 BT.
- A fir, 20 ins. diam., bears S. 21° W., 39 lks. dist. marked T 27 N. R 28 W. S 14 BT.
- A fir, 16 ins. diam., bears N. 62° W., 22 lks. dist. marked T 27 N. R 28 W. S 11 BT."

2006 remonumentation by Michael J. Drenth 10684LS:

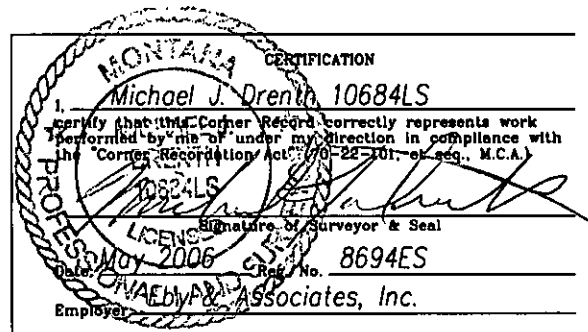
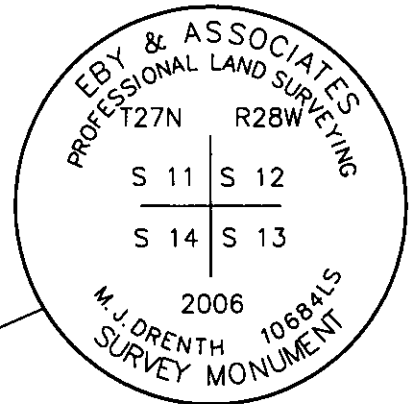
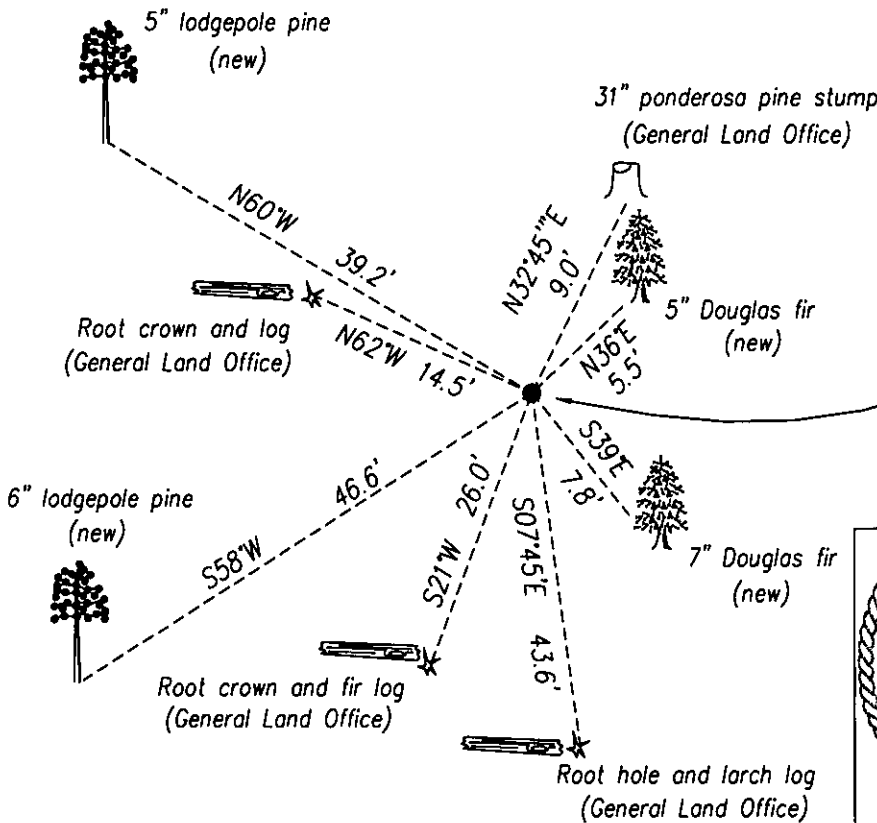
Found original General Land Office limestone, 13" x 12" x 5", firmly set, with 4 grooves on south and 1 groove on east faces. From which:

- A ponderosa pine stump, 31 inches diameter, 6 feet high, bears N. 32°45' E., 9.0 feet distant with visible scribing "27N R28W S12" and "BT".
- A root hole, bears S. 7°45' E., 43.6 feet distant, with 15" diameter larch fallen to west.
- A root crown bears S. 21° W., 26.0 feet distant, with a 24" diameter fir log lying to the east with visible scribing "27N R28W S14".
- A root crown, bears N. 62° W., 14.5 feet distant.

At the position of the original General Land Office stone, I set an aluminum pipe, 2 1/2 inches diameter, 30 inches long, 22 inches in the ground, with a 3 1/4 inch diameter aluminum cap marked as shown, set in a 2 foot diameter stone collar. From which I establish 4 new bearing trees:

- A Douglas fir, 5 inches diameter, bears N. 36° W., 5.5 feet distant, scribed "T27N R28W S12 BT".
- A Douglas fir, 7 inches diameter, bears S. 39° E., 7.8 feet distant, scribed "T27N R28W S13 BT".
- A lodgepole pine, 6 inches diameter, bears S. 58° W., 46.6 feet distant, scribed "T27N R28W S14 BT".
- A lodgepole pine, 5 inches diameter, bears N. 60° W., 39.2 feet distant, scribed "X" and "BT".

I axe snow blazes on both trees, paint the blazes and faces red, and attach Land Survey Monument signs to them. All distances measured with steel tape. All bearings measured with Silva hand compass, 16° east magnetic declination.



Office of Clerk and Recorder, County of Lincoln. This "corner

record" was filed for record 202250 BOOK: CCR CC&R'S PAGE: 11064 Pages: 1

was noted on the cross-index STATE OF MONTANA LINCOLN COUNTY RECORDED: 04/16/2007 9:40 KOI: CC&R'S

book No. \_\_\_\_\_ TAMMY D. LAUER CLERK AND RECORDER

FEE: \$0.00

BY: *Tammy D. Lauer*

TO: EBY & ASSOCIATES P.O. BOX 7144, KALISPELL, MT 59904

Cross Index No. J - 21 T. 27N R. 28W P.M.M.

Adopted July 1, 1981, Montana Board of Professional Engineers & Land Surveyors

Sec. 13


• corner this sheet