

CERTIFIED CORNER RECORDATION

Corner South Quarter Corner, Section 13 T. 27 N. R. 28 W. P.M.M. Lincoln County
North Quarter Corner, Section 24

1902 Original General Land Office record by Burton S. Adams and William C. Weeks, Book 4280 Page 15:

"Set a limestone, 20 x 12 x 10 ins., 15 ins. in the ground, for 1-4 sec. cor. marked 1-4 on N. face; from which

A pine, 8 ins. diam. bears N. 22°30' E., 75 lks. dist. marked 1-4 S. 13 BT.

A pine, 10 ins. diam. bears S. 85°15' E., 13 lks. dist. marked 1-4 S. 24 BT."

1991 Certified Corner Recordation by Terry L. Druyvestein 2927ES:

"Found Original Stone. From Which original BT stump bears N22°E, 48.4'

Left Stone in Place. Set a 5' Steel Fence Post at approximately 1' South of monument. Established Two RM Trees.

An 9" D. Fir bears N 31° E, 21.8'. A 10" D. Fir bears S 46° E, 22.7'. Both RM Trees tagged with MARLS Land Monument Sign and Painted Red Band around Trees."

2006 remonumentation by Michael J. Drenth 10684LS:

Found base of original General Land Office stone, firmly set, below ground level, with top of stone lying on the ground 1 foot east of the base, visible chiseling, "1/4", from which:

A root crown bears S85 1/4° E, 8.6 feet distance, with log alongside, visible scribing, "1/4 2".

At the position of the original General Land Office stone base, I set an aluminum pipe, 2 1/2 inches diameter, 30 inches long, 27 inches in the ground, with a 3 1/4 inch diameter aluminum cap marked as shown.

From which I establish 2 new bearing trees:

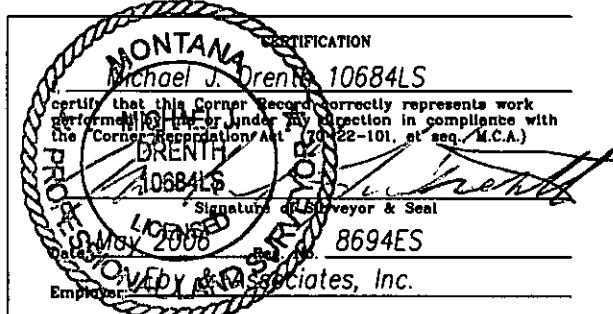
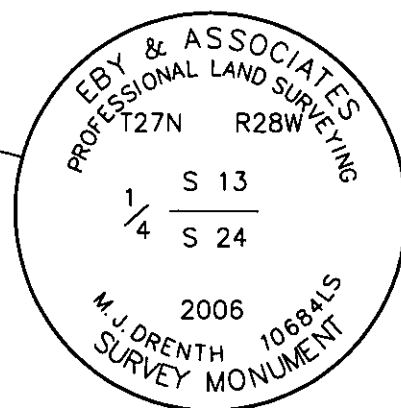
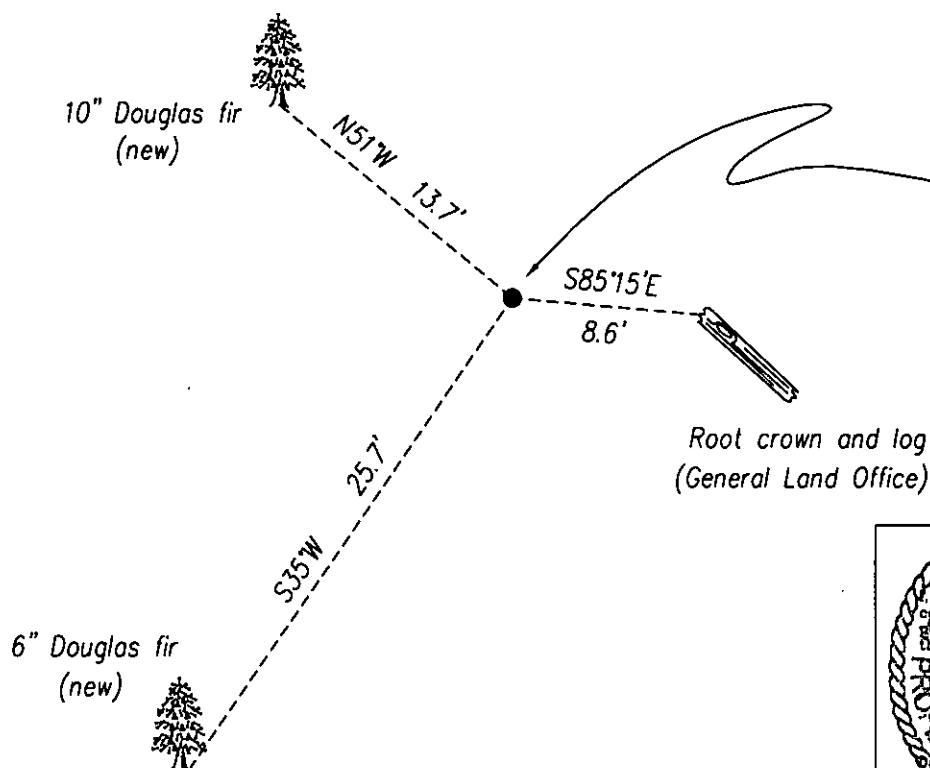
A Douglas fir, 6 inches diameter, bears S. 35° W., 25.7 feet distant, scribed "1/4 S 24 BT".

A Douglas fir, 10 inches diameter, bears N. 51° W., 13.7 feet distant, scribed "1/4 S 13 BT".

I bury the two pieces of the original stone, chisel marks down, along the west side of the pipe monument.

I axe snow blazes on both trees, paint the blazes and faces red, and attach Land Survey Monument signs to them.

All distances measured with steel tape. All bearings measured with Silva hand compass, 16° east magnetic declination.



Office of Clerk and Recorder, County of Lincoln. This "corner

record" was filed for record o 202249 BOOK: CCR CC&R'S PAGE: 11063 Pages: 1

was noted on the cross-index STATE OF MONTANA LINCOLN COUNTY

book No. TAMMY D. LAUER CLERK AND RECORDER

FEE: \$0.00

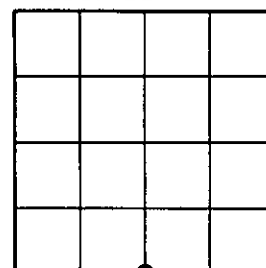
BY: Michael J. Drenth

TO: EBY & ASSOCIATES P.O. BOX 7144, KALISPELL, MT 59904

Cross Index No. N - 23 T. 27N R. 28W PMM

Adopted July 1, 1981, Montana Board of Professional Engineers & Land Surveyors

Sec. 13



• corner this sheet