

CERTIFIED CORNER RECORDATION

Corner Northeast Corner, Section 13 T. 27 N. R. 28 W. P.M.M. Lincoln County

1900 Original General Land Office record by James M. Page and John P. Henselund Book 3652 Page 30 and 31:

"Set a slate stone, 14 x 12 x 8 ins. 10 ins. in the ground for Cor. of Secs. 7, 12, 13 + 18 marked with 4 notches on S and 2 notch on N. edges; from which

A pine 8 ins. diam. bears N. 4° E., 72 lks. dist., marked T. 27 N., R. 27 W., S. 7, B.T.

A tamarack, 34 ins. diam., bears S. 44° E., 156 lks. dist., marked T. 27 N., R. 27 W., S. 18, B.T.

A tamarack, 36 ins. diam., bears S. 38 1/2° W., 128 lks., dist., marked T. 27 N., R. 28 W., S. 13, B.T.

A tamarack, 12 ins. diam., bears N. 8 1/2° W., 33 lks. dist., marked T. 27 N. R. 28 W., S. 12, B.T."

2006 remonumentation by Michael J. Drenth 10684LS:

Found original General Land Office stone, 14 x 12 x 8 inches, firmly set, buried 6 inches below ground level, with 4 grooves on south and 2 grooves on north faces. From which:

A larch stump, 36 inches diameter, bears S. 43°41' E., 103.2 feet distant, with visible scribing and USFS bearing tree sign.

A larch stump, 50 inches diameter, bears S. 39°32' W., 84.8 feet distant, with visible scribing and USFS bearing tree sign.

A larch stump, 19 inches diameter, high-stumped, bears N. 6°24' W., 22.5 feet distant with Anaconda Company location poster dated 3-28-55.

At the position of the original General Land Office stone, I set an aluminum pipe, 2 1/2 inches diameter, 30 inches long, 28 inches in the ground, with a 3 1/4 inch diameter aluminum cap marked as shown, set in a 1.5 foot diameter stone collar. From which I establish 2 new bearing trees:

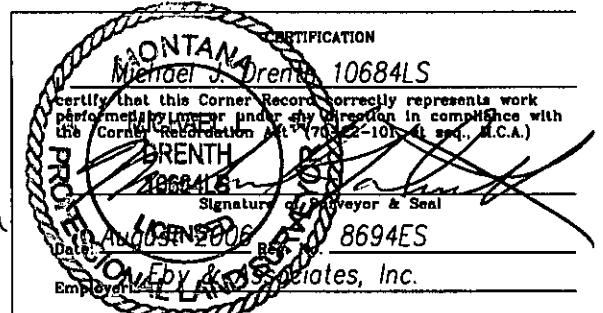
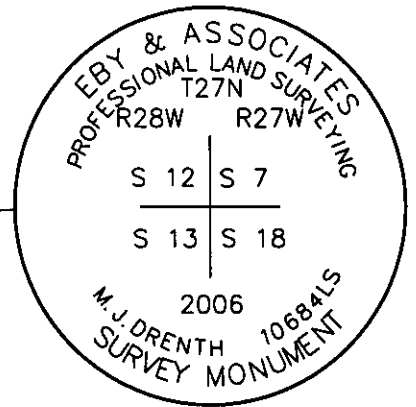
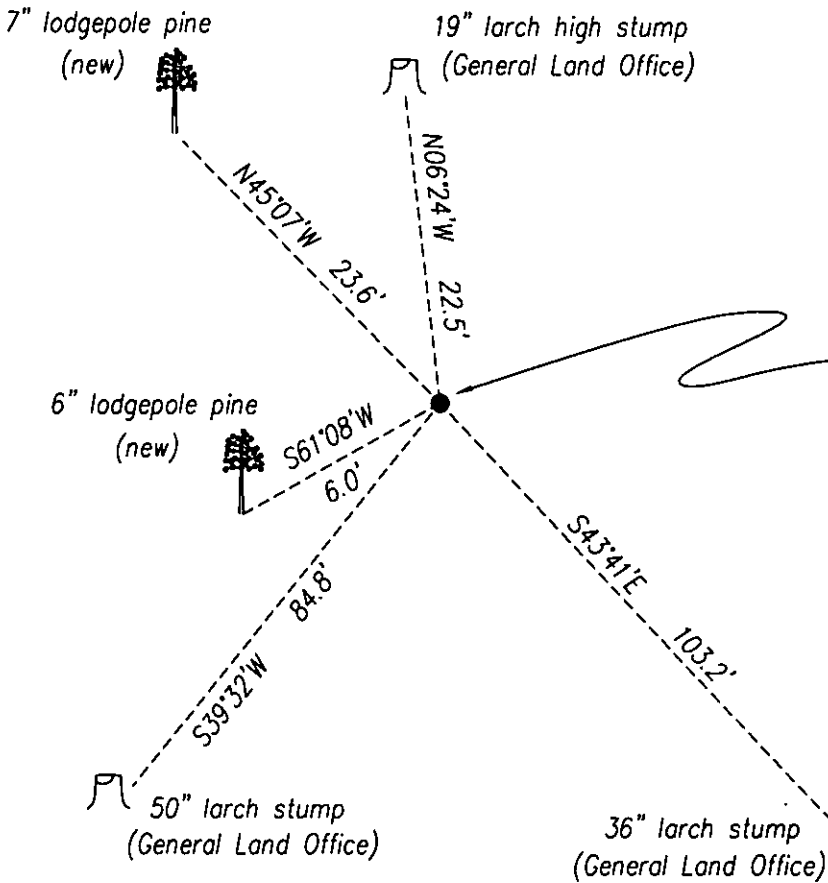
A lodgepole pine, 6 inches diameter, bears S. 61°08' W., 6.0 feet distant, scribed "T27N R28W S13 BT".

A lodgepole pine, 7 inches diameter, bears N. 45°07' W., 23.6 feet distant, scribed "T27N R28W S12 BT".

I bury the original stone upsidedown along the northwest side of the pipe monument.

I axe snow blazes and attach Land Survey Monument signs to both new trees.

All bearings are geodetic, bearings and distances measured with total station instrument.



Office of Clerk and Recorder, County of Lincoln . This "corner

record" was filed for record o 202248 BOOK: CCR CC&R'S PAGE: 11062 Pages: 1

was noted on the cross-index STATE OF MONTANA LINCOLN COUNTY

book No. _____ RECORDED: 04/16/2007 9:30 KOI: CC&R'S

TAMMY D. LAUER CLERK AND RECORDER

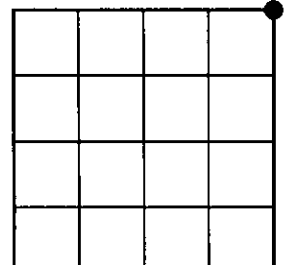
FEE: \$0.00 BY Michael J. Drenth

TO: EBY & ASSOCIATES P.O. BOX 7144, KALISPELL, MT 59904

Cross Index No. J - 25 T. 27N R. 28W PMM

Adopted July 1, 1981, Montana Board of Professional Engineers & Land Surveyors

Sec. 13



• corner this sheet