

CERTIFIED CORNER RECORDATION

CORNER NW Sec. Cor. S 18 T. 27 N., R. 28 W., P.M.M. LINCOLN COUNTY

RECORD:

1903 original GLO notes by Burton S. Adams.

"Set a limestone, 18 x 10 x 8 ins. in the ground, for cor. of secs. 7 and 18, marked with 4 notches on S. and 2 notches on N. edges; from which

A Tamarack, 30 ins. in diam., bears S. 24° 15' W., 94 lks, dist., marked T27N R28W S7 BT.

A Tamarack, 12 ins. in diam., bears N. 11° 15' W., 161 lks, dist., marked T27N R28W S 18 BT."

FOUND EVIDENCE:

Found original stone with (2) BT's

A Douglas Fir, 9 ins. diam., scribed T 27 N R 28 W S 7 BT bears N. 83° W., 34 ft. dist.

A Lodgepole, 7 ins. diam., scribed T 27 N R 28 W S 18 BT bears S. 65° W., 42 ft. dist.

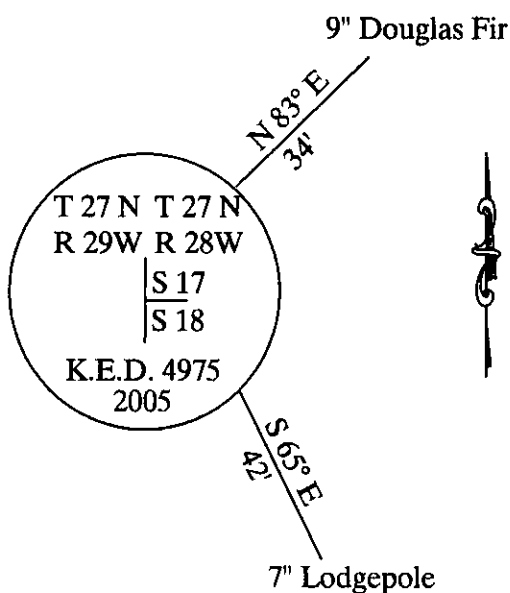
PERPETUATION:

Replaced original stone with a 3 1/4 inch aluminum cap stamped (see diagram below) on a 5/8 inch dia. rebar 30 inches long. From which:

Found bearing trees were in good condition used them for bearing trees.

Painted 6 inch wide band with attached bearing tree signs to all trees.

MAGNETIC DECLINATION: 18° E



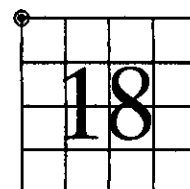
CERTIFICATION

I, GEORGE CLARK
Certify the information shown herein is true and correct
Signature of Ground Party Chief
I, KENNETH E. DAVIS
certify that this Corner Record correctly represents work
performed in accordance with my direction in compliance with the
"Corner Recordation Act", MCA 10-2-401, et seq.
Signature of Surveyor & Seal
at 9/2/2005 Reg. No. 4975-S
Elected Surveyor Surveying Inc

SKETCH OF CORNER

Office of Clerk and Recorder, County of Lincoln
This "corner" was noted
No. _____
In book No. _____
187821 BOOK: CCR CC&R'S PAGE: 10839 Pages: 1
STATE OF MONTANA LINCOLN COUNTY
RECORDED: 09/09/2005 9:30 KOI: CC&R'S
CORAL M. CUMMINGS CLERK AND RECORDER
FEE: \$0.00 BY: Francis Dugan
TO: FILED

SECTION



Cross Index No. _____ T. _____ N., R. _____ W., P.M.M.

THIS CORNER