

# CERTIFIED CORNER RECORDATION

Corner NW cor. of Sec. 15 T 27 N. R. 28 W. P.M.M. LINCOLN County

I. Record: 1902 GLO survey by Burton S. Adams & William C. Weeks. Set a slate stone, 18x12x8 ins., 12 ins. in the ground, marked with 4 notches on S. and 3 notches on E. edges from which:

- A pine, 36 ins. diam., bears N4°45'E, 102 lks. dist. (67.32 ft.)
- A fir, 10 ins. diam., bears S15°45'E, 83 lks. dist. (54.78 ft.)
- A fir, 24 ins. diam., bears S38°W, 69 lks. dist. (45.54 ft.)
- A fir, 20 ins. diam. bears N50°15'W, 126 lks. dist. (83.16 ft.)

II. Found: A slate stone 18x12x8 ins., loosely set with 4 notches on S. and 3 notches on E., from which:

- A pine snag, bears N.4°E., 67.32 ft. dist., with visible scribes.
- A fir, 19 1/2 ins. diam., bears S.16°E., 54.78 ft. dist., with healed face.
- A fir stump, bears S.38°W., 45.54 ft. dist., with visible scribes.
- A fir, 27 ins. diam., bears N.50°W., 83.16 ft. dist., with visible scribes.

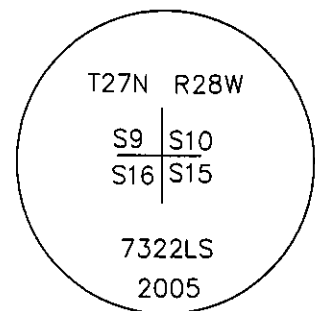
III. Perpetuation: At the exact position of found stone, we set a Alum. pipe 2 1/2 ins. diam., 30 ins. long 24 ins. in the ground, with a 3 1/4 in. diam. Alum. cap marked as shown below and a 2 ft. rock collar, from which:

- A larch, 13 1/2 ins. diam., bears N.52°E., 18.0 ft. dist., scribed T27N R28W S10 BT.
- A fir, 10 ins. diam., bears S.13°W., 6.5 ft. dist., scribed T27N R28W S16 BT.

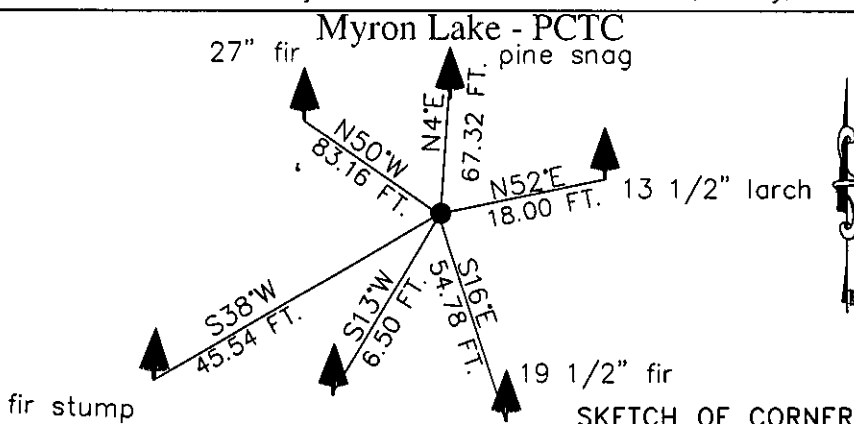
Painted 6 in. wide red bands around all BT's and attached new Bearing Tree signs as needed and Land Survey Monument signs on back of all bearing trees.

Magnetic declination: 20° East assumed

Equipment used: Hand compass and loggers tape



Kootenai Surveyors Inc., 314 California Av., Libby, MT. 59923 (406) 293-4354



CERTIFICATION

I, John Damon  
certify the information shown herein is true and correct.

Alvah F. Hughes  
Signature Ground Party Chief

I, Alvah F. Hughes  
certify that this Corner Record correctly represents work performed by me or under my direction in compliance with the "Corner Recordation Act" (70-22-101 et seq., M.C.A.)

Alvah F. Hughes  
Signature of Surveyor & Seal

Date: 5/19/2005 Reg. No. 7322-LS

Employer: Kootenai Surveyors Inc.

Office of Clerk and Recorder, County of Lincoln This "corner

record" was filed for re 184762 BOOK: CCR CC&R'S PAGE: 10791 Pages: 1  
was noted on the cross: STATE OF MONTANA LINCOLN COUNTY  
book No. RECORDED: 05/31/2005 11:10 KOI: CC&R'S  
CORAL M. CUMMINGS CLERK AND RECORDER  
FEE: \$0.00 BY: Barrie Kenna  
TO: KOOTENAI SURVEYORS INC. P.O. BOX 393, LIBBY, MT 59923

Cross Index No. J 13 T. 27N. R. 28W. P.M., MT

Adopted July 1, 1981, Montana Board of Professional Engineers & Land Surveyors

