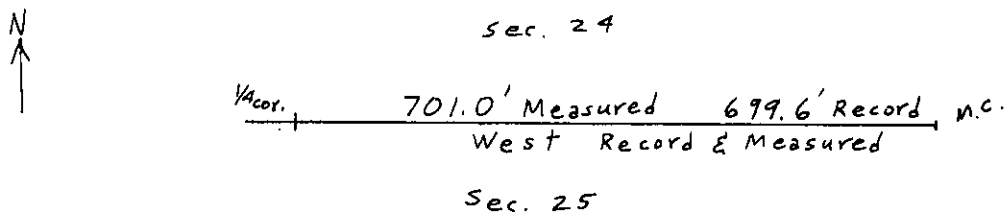


Found a 30 inch Tamarack B.T. Record: 10" Tamarack S 22°30' E 32 lks.

Date of work: 4/3/68

A 14 inch pine B.T., magnetic azimuth of  $45^{\circ}$  at 62.6 feet.

SKETCH, WITH COURSE AND DISTANCE TO ADJACENT CORNERS IF DETERMINED IN THIS SURVEY.  
(MAY SKETCH OR PASTE REPRODUCTION ON REVERSE SIDE.)



**Surveyor's Seal**

I, V. E. SMITH  
 certify that the information shown herein is true and  
 correct.

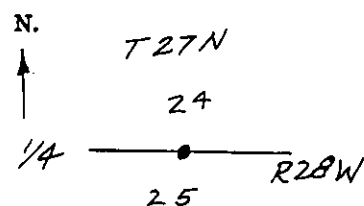
correct. *Vern E. Smith*  
Signature of Ground Party Chief

I, J. T. SHAW  
certify that I have carefully performed or reviewed the  
work done on the diagrammed corner as reported on this  
recording form and approve the same.

Signature of Surveyor

2343-5  
.....  
Registration Number

DIAGRAM OF CORNER:



☛ Corner recorded on the sheet

Office of Clerk and Recorder, County of Lincoln

This "corner record" was filed for record on the 19th. day of April 1968, was noted on the cross-index plat and is assigned page No. 105 in book No. 1 ELEANOR L. VAUGHN, Mac Taylor D.

ELEANOR L. VAUGHN,  
County Official

Cross Index No. R-24 T. 27 N R. 28 W P. Mer.