

CERTIFIED CORNER RECORDATION

Corner Sec. 7/18 T. 27 N., R. 28 W., P.M.M. Lincoln County

Record :

1903 original GLO notes by Burton S. Adams.

"Set a limestone, 18 x10 x 8 ins., 12 ins. in the ground, for cor. of secs. 7 and 18, marked with 4 notches on S. and 2 notches on N. edges; from which

A tamarack, 30 ins. in diam., bears N. 24°15' E., 94 lks. dist., marked T27N R28W S7 BT.

A tamarack, 12 ins. in diam., bears S. 11°15' E., 161 lks. dist., marked T27N R28W S18 BT."

Found Evidence :

Found original stone with 4 notches on S. and 2 notches on N. edges. No original Bearing Tree's were found.

Perpetuation :

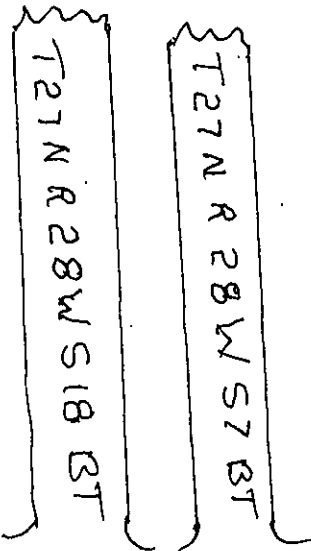
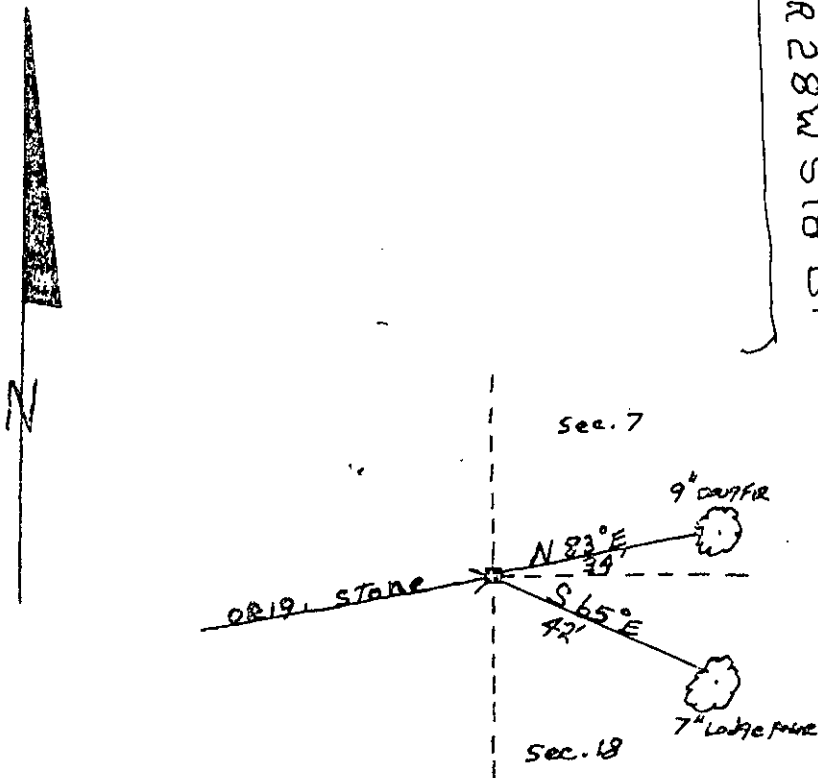
Established two (2) new Bearing Trees, from which:

A douglas fir, 9 ins. in diam., bears N. 83° E., 34 ft. dist.

A lodgepole, 7 ins. in diam., bears S. 65° E., 42 ft. dist.

Painted 6 inch wide red bands around Bearing Trees with Bearing tree signs attached and warning signs.

Declination: 17° E



CERTIFICATION

I, Rick Shaver
 certify the information shown herein is true and correct
Ricky E. Shaver
 Signature of Ground Party Chief

I, Kenneth J. Davis
 certify that this Corner Record correctly represents work performed by
 me or under my direction in compliance with the "Corner Recordation
 Act"

KENNETH J. DAVIS
 (70-22-101, et seq., M.S.A.)
 4975-S
 Signature of Surveyor
 Date 2/28/2000
 Employer Davis Surveying, Inc.

Sketch of Corner

Section

Office of Clerk and Recorder, County of Lincoln
 This "corner record" was filed for record on 2/28/2000
 was noted on the cross-index plat and is assigned page No. 10433
 in book No. Coral M. Cummins by AD
 County Official

