

**INSTRUCTIONS**

1. Original and/or subsequent record used to evaluate the corner position.
2. Description of evidence found, note discrepancies in the record, state method of establishing lost or obliterated corners.
3. Description of monument and accessories set to perpetuate the corner position.
4. Sketch of corner, show all pertinent data which can best be shown in a sketch example, corner marking, topography ties, position of accessories, etc.
5. Certification must be signed and sealed by Land Surveyor registered in the State of Montana.
6. Fill in Cross Index & Section Diagram at bottom of sheet.

**CERTIFIED CORNER RECORDATION**

Corner NE. Cor of Sec 13 T. 27 N. R. 27 W. P.M.M. Lincoln County

I. 1900 original G.L.O. record by James M. Page and John P Henselwood: Set a shale stone, 15x8x6 ins., 10 ins. in the ground, for Cor. of Secs. 7, 12, 13, and 18, mkd. with 2 notches on N. and 4 notch on S. edges from which:

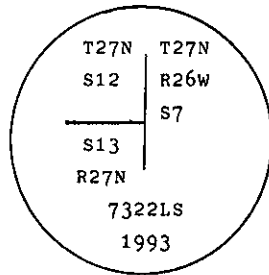
- A pine, 8 ins. diam., bears N65° E, 17 lks. dist., mkd. T27N R26W S7 B.T.
- A pine, 12 ins. diam., bears S15° E, 26 lks. dist., mkd. T27N R26W S18 B.T.
- A pine, 8 ins. diam., bears S35° W, 8 lks. dist., mkd. T27N R27W S13 B.T.
- A pine, 10 ins. diam., bears N63° W, 40 lks. dist., mkd. T27N R27W S12 B.T.

1902 Resurvey by Burton S. Adams and William E. Weeks: "For the Cor. of secs 7,12,13 and 18, which is a stone 10x6x5 ins. above ground properly marked and witnessed as described by the Surveyor General. It will hereafter refer to secs. 12 and 13 only, I efface the marks from the N.E. and S. E. bearing trees."

II. Found a firmly set stone 8x5 ins., 7 ins. above ground with 2 notches on N. face, and 4 notches on S. face.

No bearing trees found.

III. At the position of found stone, set a 2 1/2 ins. diam., aluminum pipe, 30 ins. long, 24 ins. in the ground with a 3 1/4 ins. diam., aluminum cap, mkd. as shown:



Establish 2 new bearing trees:

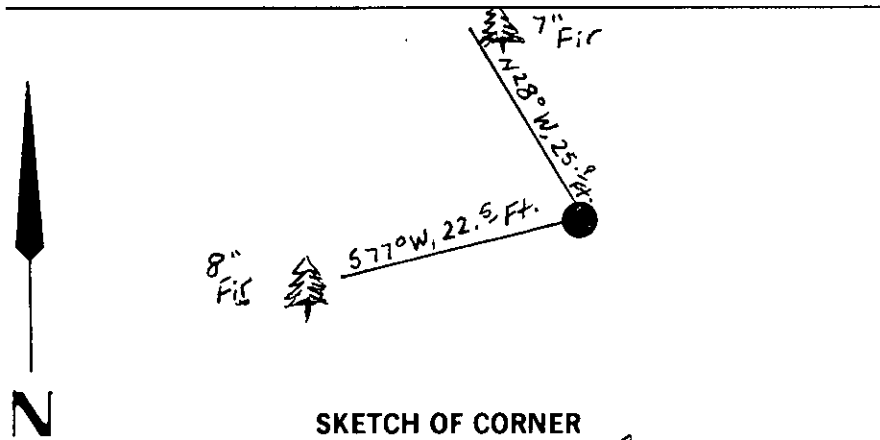
- A fir, 8 ins. diam., bears S77° W, 22.5 ft. dist., mkd. T27N R27W S13 B.T.
- A fir, 9 ins. diam., bears N28° W, 25.9 ft. dist., mkd. T27N R27W S12 B.T.

Bury the original stone alongside and raise a rock collar around new monument.

Painted red bands around the bearing trees and attached Land Survey Monument and Bearing Tree signs.

No guard post set.

Magnetic Declination: 20° East.



**SKETCH OF CORNER**

**CERTIFICATION**

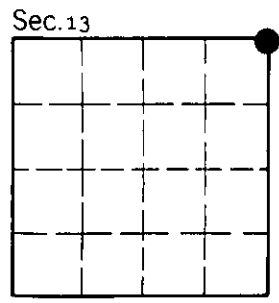
I, Thomas M. Hommel  
certify the information shown herein is true and correct.  
*Thomas M. Hommel*  
Signature Ground Party Chief

I, Alvah F. Hughes  
certify that this Corner Record correctly represents work performed by me or under my direction in compliance with the "Corner-Recordation Act" (70-22-101, et seq., M.C.A.)  
*Alvah F. Hughes*  
Signature of Surveyor & Seal

Date: 12/20/93 Reg. No. 7322LS  
Employer: U.S. FOREST SERVICE

Office of Clerk and Recorder, County of Lincoln. This "corner record" was filed for record on Jan 12, 1994 was noted on the cross-index plat and is assigned page No. 6107, in book No. \_\_\_\_\_

*Caryl M. Cummins*  
County Official



Cross Index No. J-25 T. 27 N R. 27 W PMM