

INSTRUCTIONS

1. Original and/or subsequent record used to evaluate the corner position.
2. Description of evidence found, note discrepancies in the record, state method of establishing lost or obliterated corners.
3. Description of monument and accessories set to perpetuate the corner position.
4. Sketch of corner, show all pertinent data which can best be shown in a sketch example, corner marking, topography ties, position of accessories, etc.
5. Certification must be signed and sealed by Land Surveyor registered in the State of Montana.
6. Fill in Cross Index & Section Diagram at bottom of sheet.

CERTIFIED CORNER RECORDATION

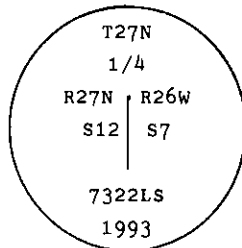
Corner E. 1/4 Cor. of Secs. 12 & 7 T. 27 N. R. 27 W. P.M.M. Lincoln County

I. 1900 original G.L.O. record by James M. Page and John P Henselwood: Set a slate stone, 18x10x4 ins., 13 ins., in the ground, for 1/4 sec. cor., mkd. 1/4 on W. face; and raise a mound of stone, 2ft. base, 1 1/2 ft. high, W. of cor. Pits impracticable.

II. Found a firmly set stone, 5x8 ins., 6 ins. above ground, mkd., 1/4 on W. face.

No bearing trees found.

III. At the position of found stone, set a 2 1/2 ins. diam., aluminum pipe, 30 ins. long, 22 ins. in the ground with a 3 1/4 ins. diam., aluminum cap, mkd. as shown:



Establish 2 new bearing trees:

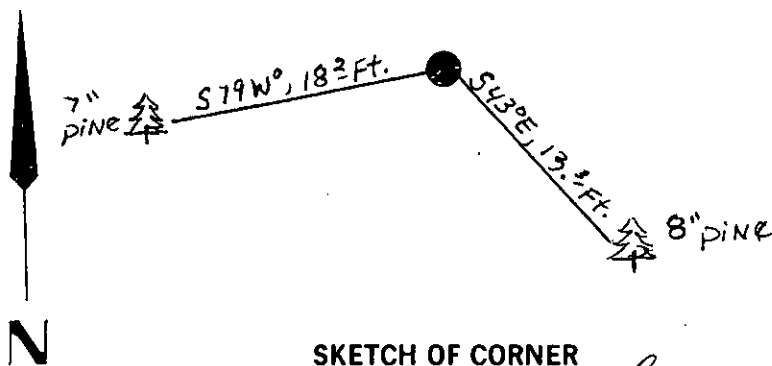
A pine, 8 ins. diam., bears S43°E, 13.3 ft. dist., mkd. 1/4 S 7 B.T.

A pine, 7 ins. diam., bears S79°W, 18.2 ft. dist., mkd. 1/4 S 12 B.T.

Painted red bands around the bearing trees and attached Land Survey Monument and Bearing Tree signs.

No guard post set.

Magnetic Declination: 20° East.



SKETCH OF CORNER

CERTIFICATION

Thomas M. Hommel

I, _____
certify the information shown herein is true and correct.

Signature Ground Party Chief

Alvah F. Hughes

I, _____
certify that this Corner Record correctly represents work performed by me or under my direction in compliance with the "Corner Recordation Act" (70-22-101, et seq., M.C.A.)

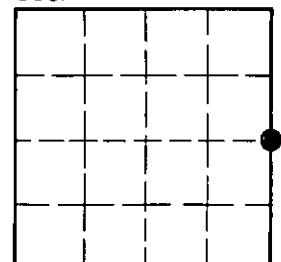
Signature of Surveyor

Date: 12/16/93 Reg. No. 7322LS

Employer: U.S. FOREST SERVICE

Office of Clerk and Recorder, County of Lincoln. This "corner record" was filed for record on Jan 12, 1994 was noted on the cross-index plat and is assigned page No. 6105, in book No. _____
Coral M. Cummings
County Official

Sec. 12



• - corner this sheet

G-25 T. 27 N R. 27 W PMM
Cross Index No. _____