

INSTRUCTIONS

1. Original and/or subsequent record used to evaluate the corner position.
2. Description of evidence found, note discrepancies in the record, state method of establishing lost or obliterated corners.
3. Description of monument and accessories set to perpetuate the corner position.
4. Sketch of corner, show all pertinent data which can best be shown in a sketch example, corner marking, topography ties, position of accessories, etc.
5. Certification must be signed and sealed by Land Surveyor registered in the State of Montana.
6. Fill in Cross Index & Section Diagram at bottom of sheet.

CERTIFIED CORNER RECORDATION

Corner S. 1/4 Cor. of Secs. 12 T. 27 N., R. 27 W., P.M.M. Lincoln County

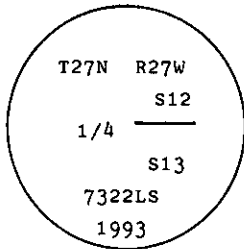
I. 1900 original G.L.O. record by James M. Page and John P Henselwood: Set a shale stone, 18x12x6 ins., 13 ins. in the ground, for 1/4 sec. cor. 12, mkd. 1/4 on N; and raise a mound of stone, 2ft. base, 1 1/2 ft. high. N. of cor. Pits impracticable.

II. Found a firmly set stone, 6x10 ins., 7 ins. above ground, mkd. 1/4 on N. face, and a mound of stone 3 ft. North.

from which:

No bearing trees found.

III. At the position of found stone, set a 2 1/2 ins. diam., aluminum pipe, 30 ins. long, 24 ins. in the ground with a 3 1/4 ins. diam., aluminum cap, mkd. as shown:



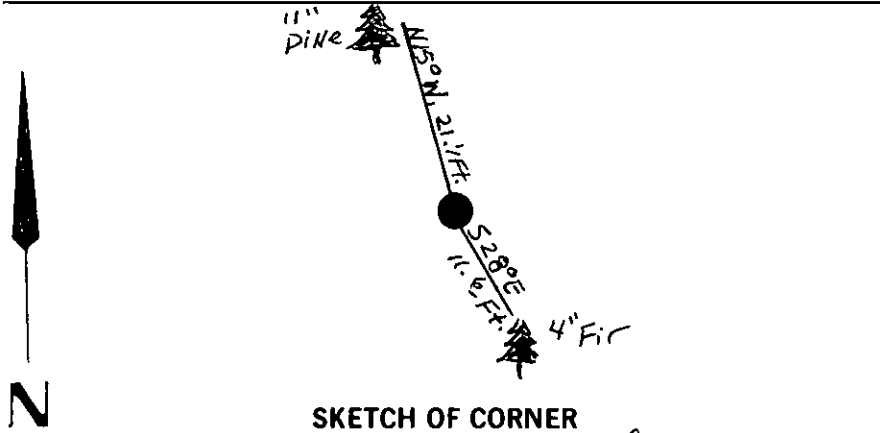
Establish 2 new bearing trees:

- A pine, 11 ins. diam., bears N15° W, 21.1 ft. dist., mkd. 1/4 S 12 B.T.
- A fir, 4 ins. diam., bears S28° E, 11.6 ft. dist., mkd. X B.T.

Bury the original stone alongside and raise a rock collar around new monument.

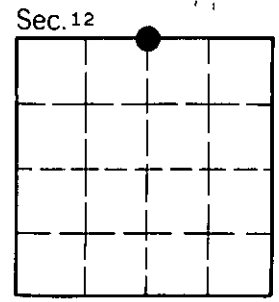
No guard post set.

Magnetic Declination: 20° East.



CERTIFICATION Thomas M. Hommel certify the information shown herein is true and correct. Signature Ground Party Chief Alvah F. Hughes certify that this Corner Record correctly represents work performed by me or under my direction in compliance with the 'Corner Recordation Act' (70-22-101, et seq., M.C.A.) Signature of Surveyor Alvah F. Hughes Date: 12/20/93 Reg. No. 7322LS Employer: U.S. FOREST SERVICE

Office of Clerk and Recorder, County of Lincoln. This 'corner record' was filed for record on Jan 12, 1994 was noted on the cross-index plat and is assigned page No. 6104, in book No. Coral M. Cummings, County Official



Cross Index No. J-23 T. 27 N. R. 27 W. PMM