

INSTRUCTIONS

1. Original and/or subsequent record used to evaluate the corner position.
2. Description of evidence found, note discrepancies in the record, state method of establishing lost or obliterated corners.
3. Description of monument and accessories set to perpetuate the corner position.
4. Sketch of corner, show all pertinent data which can best be shown in a sketch example, corner marking, topography ties, position of accessories, etc.
5. Certification must be signed and sealed by Land Surveyor registered in the State of Montana.
6. Fill in Cross Index & Section Diagram at bottom of sheet.

CERTIFIED CORNER RECORDATION

Corner N. 1/4 Cor. of Sec. 12 T. 27 N. R. 27 W. P.M.M. Lincoln County

- I. 1900 original G.L.O. record by James M. Page and John P Henselwood: Set a shale stone, 15x12x4 ins., 10 ins. in the ground, for 1/4 sec. cor. 12, mkd. 1/4 on N; from which:

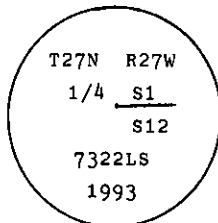
A fir, 12 ins. diam., bears N72 1/2° E, 74 lks. dist., mkd. 1/4 S. 1 B.T.
A fir, 8 ins. diam., bears S51 1/2° E, 118 lks. dist., mkd. 1/4 S. 12 B.T.

- II. Found a firmly set stone, 11x5 ins., 6 ins. above ground, mkd. 1/4 on N. face.

from which:

A fir, 27 ins. diam., bears N72° E, 48.9 ft. dist., healed face.
Rotten remains of a fir bears S52° E, 77.9 ft. dist., no visible marks.

- III. At the position of found stone, set a 2 1/2 ins. diam., aluminum pipe, 30 ins. long, 22 ins. in the ground with a 3 1/4 ins. diam., aluminum cap, mkd. as shown:



Establish 1 new bearing tree:

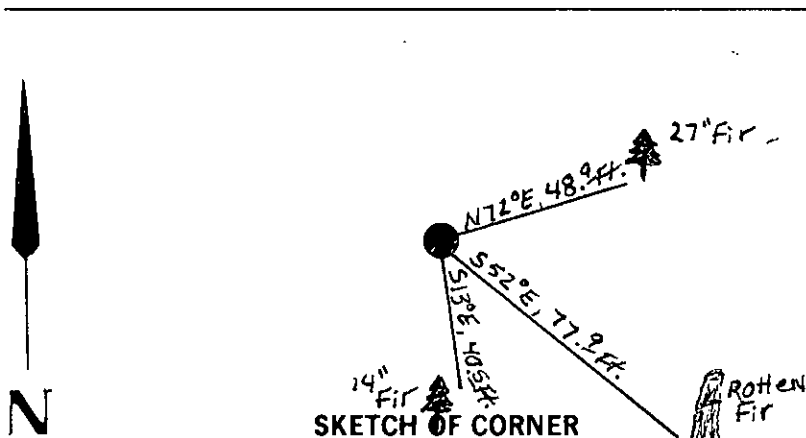
A fir, 14 ins. diam., bears S13° E, 40.5 ft. dist., mkd. 1/4 S 12 B.T.

Bury the original stone alongside and raise a rock collar around new monument.

Painted red bands around the bearing trees and attached Land Survey Monument and Bearing Tree signs.

No guard post set.

Magnetic Declination: 20° East.



CERTIFICATION

Thomas M. Hommel

I, Thomas M. Hommel
certify the information shown herein is true and correct
Signature Ground Party Chief

Alvah F. Hughes

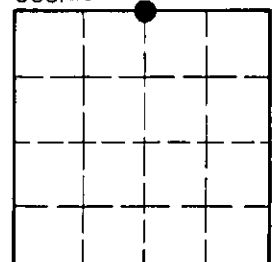
I, Alvah F. Hughes
certify that this Corner Record correctly represents work performed
by me or under my direction in compliance with the Corner
Recordation Act (70-22-101, et seq. M.C.A.)
Signature of Surveyor & Seal

Date: 12/20/93 Reg. No. 7322LS

Employer: U.S. FOREST SERVICE

Office of Clerk and Recorder, County of Lincoln. This "corner
record" was filed for record on Jan 12, 1994
was noted on the cross-index plat and is assigned page No. 6103, in
book No. Coral M. Cummins & AS
County Official

Sec. 12



Cross Index No. E-23 T. 27 N R. 27 W P.M.M.

• - corner this sheet