

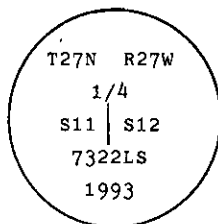
INSTRUCTIONS

1. Original and/or subsequent record used to evaluate the corner position.
2. Description of evidence found, note discrepancies in the record, state method of establishing lost or obliterated corners.
3. Description of monument and accessories set to perpetuate the corner position.
4. Sketch of corner, show all pertinent data which can best be shown in a sketch example, corner marking, topography ties, position of accessories, etc.
5. Certification must be signed and sealed by Land Surveyor registered in the State of Montana.
6. Fill in Cross Index & Section Diagram at bottom of sheet.

CERTIFIED CORNER RECORDATION

Corner W. 1/4 Cor. of Sec 12 T. 27 N. R. 27 W. P.M.M. Lincoln County

- I. 1900 original G.L.O. record by James M. Page and John P Henselwood: Set a shale stone, 18x12x3 ins., 13 ins., in the ground, for 1/4 sec. cor., mkd. 1/4 on W. face; from which:
- A pine, 6 ins. diam., bears S43°E, 30 lks. dist., mkd. 1/4 S 12 B.T.
A pine, 6 ins. diam., bears S50°W, 5 lks. dist., mkd. 1/4 S 11 B.T.
- II. Found a firmly set stone, 3x9 ins., 5 ins. above ground, mkd., 1/4 on W. face.
- from which:
- A pine, 11 ins. diam., bears S62°E, 18.8 ft. dist., mkd. 1/4 S 12 B.T. (Record S43°E, 19.8 ft. dist.)
- III. At the position of found stone, set a 2 1/2 ins. diam. aluminum pipe, 30 ins. long, 24 ins. in the ground with a 3 1/4 ins. diam., aluminum cap, mkd. as shown:



Buried original stone alongside new monument.

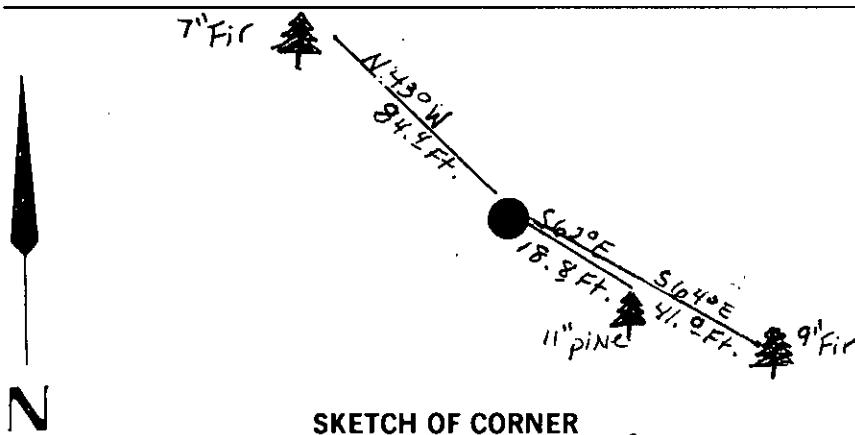
Establish 2 new bearing trees:

- A fir, 9 ins. diam., bears S64°E, 41.0 ft. dist., mkd. 1/4 S 12 B.T.
A fir, 7 ins. diam., bears N43°W, 84.4 ft. dist., mkd. 1/4 S 11 B.T.

Painted red bands around the bearing trees and attached Land Survey Monument and Bearing Tree signs.

No guard post set.

Magnetic Declination: 20° East.

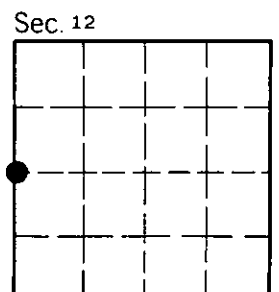


SKETCH OF CORNER

CERTIFICATION	
I, <u>Thomas M. Hommel</u>	
certify the information shown herein is true and correct.	
<u>Thomas M. Hommel</u>	
Signature Ground Party Chief	
I, <u>Alvah F. Hughes</u>	
certify that this Corner Record correctly represents work performed by me or under my direction in compliance with the "Corner Recordation Act" (70-22-10) et seq., M.C.A.	
<u>Alvah F. Hughes</u>	
Signature of Surveyor & Seal	
Date: <u>12/20/93</u>	Reg. No. <u>7322LS</u>
Employer: <u>U.S. FOREST SERVICE</u>	

Office of Clerk and Recorder, County of Lincoln. This "corner record" was filed for record on Jan 12, 1994 was noted on the cross-index plat and is assigned page No. 6102, in book No.

Coral M. Cummings
County Official



• - corner this sheet

G-21 T. 27 N R. 27 W PMM
Cross Index No.