

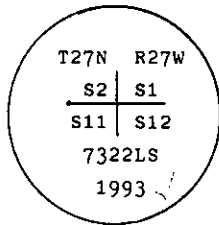
INSTRUCTIONS

1. Original and/or subsequent record used to evaluate the corner position.
2. Description of evidence found, note discrepancies in the record, state method of establishing lost or obliterated corners.
3. Description of monument and accessories set to perpetuate the corner position.
4. Sketch of corner, show all pertinent data which can best be shown in a sketch example, corner marking, topography ties, position of accessories, etc.
5. Certification must be signed and sealed by Land Surveyor registered in the State of Montana.
6. Fill in Cross Index & Section Diagram at bottom of sheet.

CERTIFIED CORNER RECORDATION

Corner Cor. of Secs. 1,2,11, and 12 T. 27 N. R. 27 W. P.M.M. Lincoln County

- I. 1900 original G.L.O. record by James M. Page and John P Henselwood: Set a shale stone, 18x8x8 ins., 13 ins. in the ground, for Cor. of Secs. 1,2,11, and 12, mkd. with 5 notches on S. and 1 notch on E. edges and raise a mound of stone, 2 ft. base, 1 1/2 ft. high, W. of Cor. Pits impracticable.
- II. Found a firmly set stone, 8x8 ins., 5 ins. above ground with 5 notches on south and 1 notch on the east face
- III. At the position of found stone, set a 2 1/2 ins. diam., aluminum pipe, 30 ins. long, 24 ins. in the ground with a 3 1/4 ins. diam., aluminum cap, mkd. as shown.



Establish 4 new bearing trees:

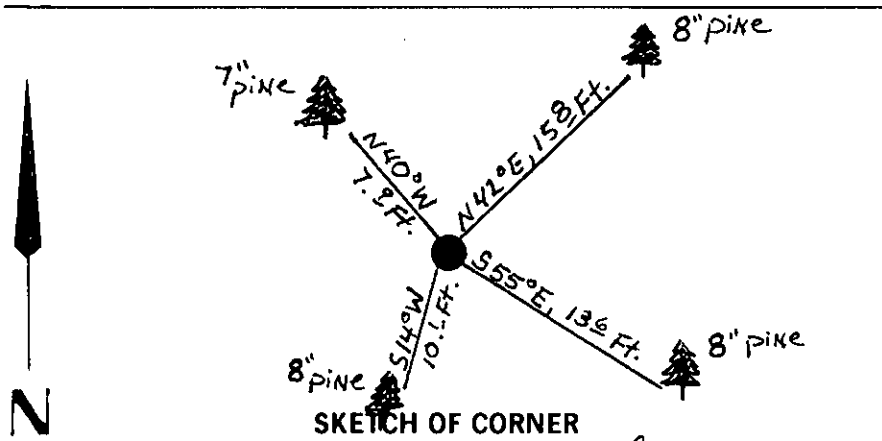
- A pine, 8 ins. diam., bears N42° E, 15.8 ft. dist., mkd. T27N R27W S1 B.T.
- A pine, 8 ins. diam., bears S55° E, 13.6 ft. dist., mkd. T27N R27W S12 B.T.
- A pine, 8 ins. diam., bears S14° W, 10.1 ft. dist., mkd. T27N R27W S11 B.T.
- A pine, 7 ins. diam., bears N40° W, 7.9 ft. dist., mkd. T27N R27W S2 B.T.

Bury the original stone alongside and raise a rock collar around new monument.

Painted red bands around the bearing trees and attached Land Survey Monument and Bearing Tree signs.

No guard post set.

Magnetic Declination: 20° East.



CERTIFICATION

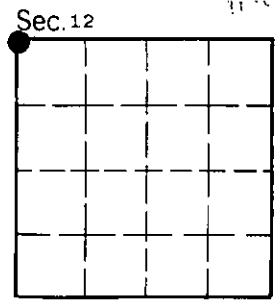
I, Thomas M. Hommel
 certify the information shown herein is true and correct.
 Signature Ground Party Chief

I, Alvah F. Hughes
 certify that this Corner Record correctly represents work performed by me or under my direction in compliance with the "Corner Recordation Act" (70-22-101, et seq., M.C.A.)
 Signature of Surveyor & Seal

Date: 12/20/93 Reg. No. 7322LS

Employer: U.S. FOREST SERVICE

Office of Clerk and Recorder, County of Lincoln. This "corner record" was filed for record on Jan 12, 1994 was noted on the cross-index plat and is assigned page No. 6101, in book No. _____, in Coral M. Cummings County Official



E-21 T. 27 N. R. 27 W. P.M.M.
 Cross Index No. _____