

## INSTRUCTIONS

1. Original and/or subsequent record used to evaluate the corner position.
2. Description of evidence found, note discrepancies in the record, state method of establishing lost or obliterated corners.
3. Description of monument and accessories set to perpetuate the corner position.
4. Sketch of corner, show all pertinent data which can best be shown in a sketch example, corner marking, topography ties, position of accessories, etc.
5. Certification must be signed and sealed by Land Surveyor registered in the State of Montana.
6. Fill in Cross Index & Section Diagram at bottom of sheet.

## CERTIFIED CORNER RECORDATION

Corner Cor. of Secs. 11, 12, 13, and 14 T. 27 N. R. 27 W. P.M.M. Lincoln County

- I. 1900 original G.L.O. record by James M. Page and John P Henselwood: Set a slate stone, 30x8x8 ins., 24 ins. in the ground, for Cor. of Secs. 11, 12, 13 and 14 mkd. with 4 notches on S. and 1 notch on E. edges and raise a mound of stone, 2 ft. base, 1 1/2 ft. high, W. of Cor. Pits impracticable.

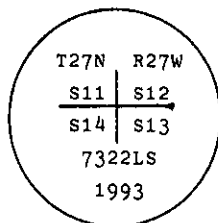
from which:

A tamarack, 8 ins., bears S23° E, 157 lks. dist., mkd. T27N R27W S13 B.T.  
No other bearing trees available.

- II. Found a firmly set stone, 7x8 ins., 11 ins. above ground with 4 notches on S. and 1 notch on E. face. Mound of stone 2 ft. West, from which:

A larch, 23 ins., bears S24° E, 102 ft. dist., healed face.

- III. At the position of found stone, set a 2 1/2 ins. diam., aluminum pipe, 30 ins. long, 24 ins. in the ground with a 3 1/4 ins. diam., aluminum cap, mkd. as shown:



Establish 3 new bearing trees:

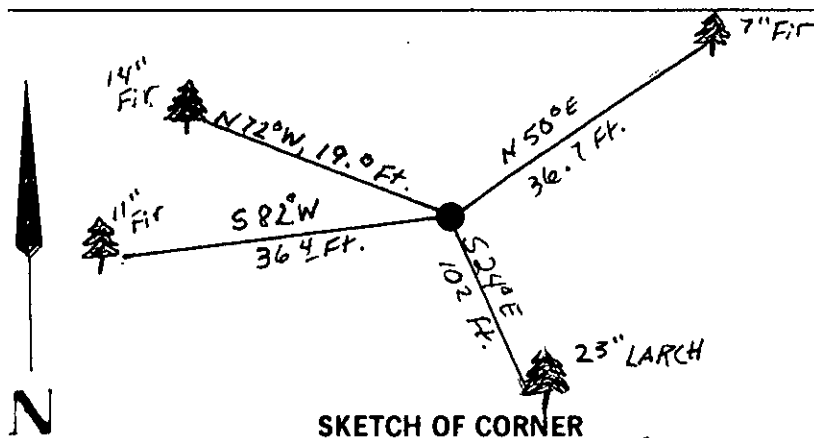
A fir, 7 ins. diam., bears N50° E, 36.7 ft. dist., mkd. T27N R27W S12 B.T.  
A fir, 11 ins. diam., bears S82° W, 36.4 ft. dist., mkd. T27N R27W S14 B.T.  
A fir, 14 ins. diam., bears N72° W, 19.0 ft. dist., mkd. T27N R27W S11 B.T.

Bury the original stone alongside and raise a rock collar around new monument.

Painted red bands around the bearing trees and attached Land Survey Monument and Bearing Tree signs.

No guard post set.

Magnetic Declination: 20° East.



SKETCH OF CORNER

## CERTIFICATION

Thomas M. Hommel

I, Thomas M. Hommel, certify the information shown herein is true and correct.

Signature Ground Party Chief

Alvah F. Hughes

I, Alvah F. Hughes, certify that this Corner Record correctly represents work performed by me or under my direction in compliance with the "Corner Recordation Act" (70-22-101, et seq., M.C.A.)

Signature of Surveyor & Seal

Date: 12/21/93 Reg. No. 7322LS

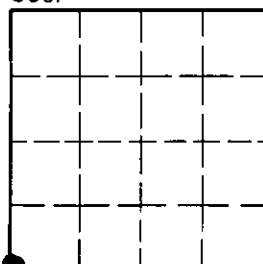
Employer: U.S. FOREST SERVICE

Office of Clerk and Recorder, County of Lincoln. This "corner record" was filed for record on Jan 12, 1994 was noted on the cross-index plat and is assigned page No. 6100, in book No. Coral M. Cummings & RB

County Official

Cross Index No. J-21 T. 27 N. R. 27 W. P.M.M.

Sec. 12



• - corner this sheet