

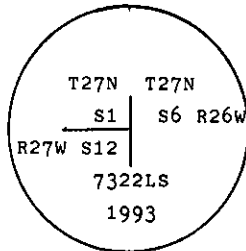
INSTRUCTIONS

1. Original and/or subsequent record used to evaluate the corner position.
2. Description of evidence found, note discrepancies in the record, state method of establishing lost or obliterated corners.
3. Description of monument and accessories set to perpetuate the corner position.
4. Sketch of corner, show all pertinent data which can best be shown in a sketch example, corner marking, topography lies, position of accessories, etc.
5. Certification must be signed and sealed by Land Surveyor registered in the State of Montana.
6. Fill in Cross Index & Section Diagram at bottom of sheet.

CERTIFIED CORNER RECORDATION

Corner NE. Cor of Sec 12 T. 27 N. R. 27 W. P.M.M. Lincoln County

- I. 1900 original G.L.O. record by James M. Page and John P Henselwood: Set a shale stone, 15x8x5 ins., 10 ins. in the ground, for Cor. of Secs. 1,6,7, and 12, mkd. with 5 notches on S. and 1 notch on N. edges. Raise a mound of stone, 2 ft. base, 1 1/2 ft. high, W. of Cor. Pits impracticable, no bearing trees.
- 1902 resurvey by Burton S. Adams and William E. Weeks: "For the Cor. of secs. 1,6,7, and 12 which is a stone 8x5x5 ins., above ground, marked and witnessed as described by the Surveyor General, as it will hereafter refer to secs. 1 and 12 only. I efface the marks from S.E. and N.E. bearing trees.
- II. Found a loosely set stone 5x9 ins., 10 ins. above ground, with 5 notches on S. face, and 1 notch on N. face and a mound of stone 3 ft. West.
- No bearing trees found.
- III. At the position of found stone, set a 2 1/2 ins. diam., aluminum pipe, 30 ins. long, 24 ins. in the ground with a 3 1/4 ins. diam., aluminum cap, mkd. as shown:



Establish 2 new bearing trees:

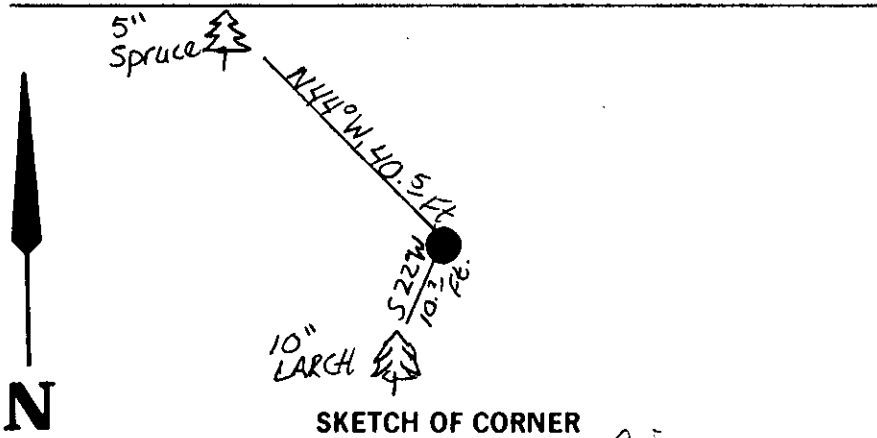
- A larch, 10 ins. diam., bears S22°W, 10.2 ft. dist., mkd. T27N R27W S12 B.T.
- A spruce, 5 ins. diam., bears N44°W, 40.5 ft. dist., mkd. X B.T.

Bury the original stone alongside and raise a rock collar around new monument.

Painted red bands around the bearing trees and attached Land Survey Monument and Bearing Tree signs.

No guard post set.

Magnetic Declination: 20° East.



SKETCH OF CORNER

CERTIFICATION

I, Thomas M. Hommel
 certify the information shown herein is true and correct.
 Signature Ground Party Chief

I, Alvah F. Hughes
 certify that this Corner Record correctly represents work performed by me or under my direction in compliance with the "Corner Recordation Act" (70-22-101, et seq., M.C.A.)
 Signature of Surveyor & Seal

Date: 12/21/93 Reg. No. 7322LS

Employer: U.S. FOREST SERVICE

Office of Clerk and Recorder, County of Lincoln. This "corner record" was filed for record on Jan 12, 1994 was noted on the cross-index plat and is assigned page No. 6099, in book No. _____, in Coral M. Cummins, B.S. County Official

Cross Index No. E-25 T. 27N R. 27W P.M.M.

Sec 12

• - corner this sheet