

## INSTRUCTIONS

1. Original and/or subsequent record used to evaluate the corner position.
2. Description of evidence found, note discrepancies in the record, state method of establishing lost or obliterated corners.
3. Description of monument and accessories set to perpetuate the corner position.
4. Sketch of corner, show all pertinent data which can best be shown in a sketch example, corner marking, topography ties, position of accessories, etc.
5. Certification must be signed and sealed by Land Surveyor registered in the State of Montana.
6. Fill in Cross Index & Section Diagram at bottom of sheet.

## CERTIFIED CORNER RECORDATION

Corner T 27 N 1/4 S 31 R 27 W P.M.M. LINCOLN County

ORIGINAL AND/OR  
SUBSEQUENT RECORD

ORIGINAL RECORD: Set a Shale Stone, 14"x 10"x 8", 10" in ground marked 1/4 on N face;

From Which:

A Pine 8" in diam bears North, 16 lks. dist. marked 1/4 S31 B.T.

A Pine 8" in diam bears S88°W, 6 lks. dist. marked 1/4 S6 B.T.

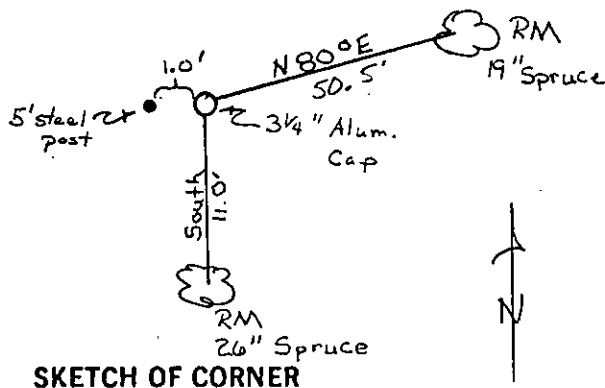
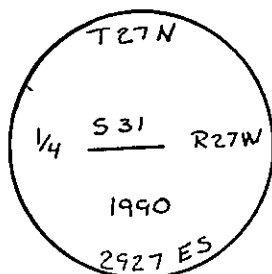
## EVIDENCE FOUND

No Evidence of Original Stone Found. Falls in logged over Area. Found one Original BT Dead and Down. Has been disturbed by Logging Activities. Did Not Use.

## PERPETUATION

Set 3 1/4" Alum. Cap on 3/4" x 24" Rebar at Proportion distance between Section Corners. Set 5' steel Fence Post at 1' West of Monument. Established two RM Trees an 26" Spruce bears South, 11.0' an 19" Spruce bears N80°E, 50.5 Feet. Both RM Trees painted with Red Band and Tagged with MARLS Land Monument Sign.

Note: Declination used - 20°E  
Measurements taken to Center of Tree



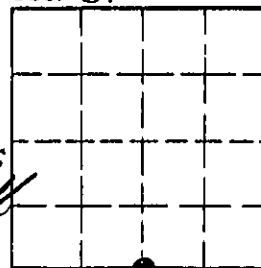
SKETCH OF CORNER

## CERTIFICATION

I, GLENN R. HOWARD  
certify the information shown herein is true and correct.  
Glenn R. Howard  
Signature of Land Surveyor  
I, TERRY L. DRUYVESTEIN  
certify that this Corner Record represents work performed by me or under my direction in compliance with the "Corner Recordation Act" (70-22-101) of the State of Montana.  
Terry L. Druyvestein  
Signature of Surveyor's Seal  
Date: 4-18-91 Reg. No. 2027 ES  
Employer: STENSATTER DRUYVESTEIN ASSOCIATES

Office of Clerk and Recorder, County of Lincoln. This "corner record" was filed for record on April 22, 1991 was noted on the cross-index plat and is assigned page No. 4532, in book No. Coral M Cummings by Bill Buckley  
County Official

Sec. 31



Cross Index No. 2-3 T. 27 N R. 27 W P.M.M.

• - corner this sheet