

INSTRUCTIONS

1. Original and/or subsequent record used to evaluate the corner position.
2. Description of evidence found, note discrepancies in the record, state method of establishing lost or obliterated corners.
3. Description of monument and accessories set to perpetuate the corner position.
4. Sketch of corner, show all pertinent data which can best be shown in a sketch example, corner marking, topography ties, position of accessories, etc.
5. Certification must be signed and sealed by Land Surveyor registered in the State of Montana.
6. Fill in Cross Index & Section Diagram at bottom of sheet.

CERTIFIED CORNER RECORDATION

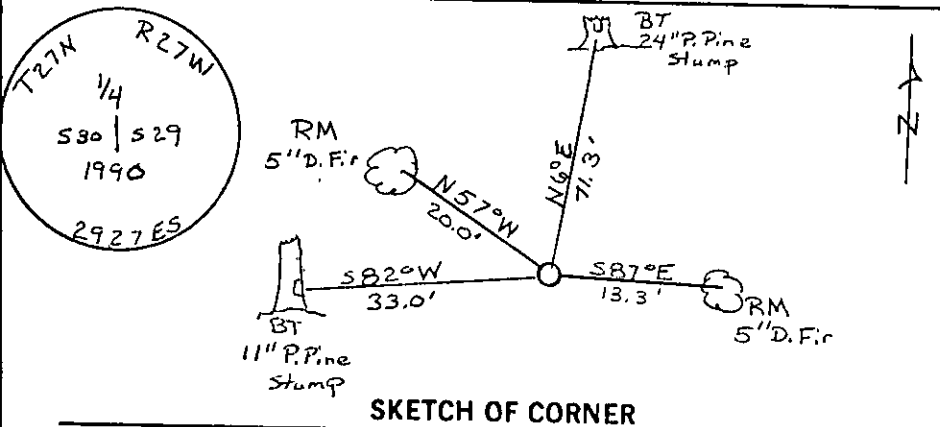
Corner  $\frac{1}{4}$  S 30 | S 29 T. 27 N R. 27 W P.M.M. LINCOLN County

ORIGINAL AND/OR SUBSEQUENT RECORD ORIGINAL RECORD: Set a Granite Stone, 12" x 8" x 6", 8" in the ground, marked  $\frac{1}{4}$  on W face;  
 From Which:  
 A pine 20" in diam bears N 7° E, 108 lks. dist marked  $\frac{1}{4}$  S 29 B.T.  
 A pine 8" in diam bears S 85° W, 50 lks. dist marked  $\frac{1}{4}$  S 30 B.T.

EVIDENCE FOUND Found Original Stone in Place but broken up. From which a 24" P. Pine stump with scribing visible bears N 6° E, 71.3'.  
 A 11" P. Pine snag with blaze and scribing bears S 82° W, 33.0'

PERPETUATION Set  $3\frac{1}{4}$ " Alum. Cap on  $\frac{3}{4}$ " x 24" Rebar. Established Two RM's  
 An 5" D. Fir bears N 57° W, 20.0', a 5" D. Fir bears S 87° E, 13.3'.  
 Both RM Trees Blazed, Painted and Tagged with MARLS Land Monument Sign.

Note: Declination used - 20° E  
 Measurements Taken to Center of Tree



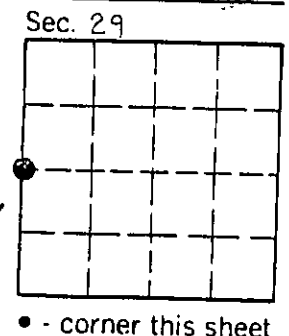
CERTIFICATION

I, Red Cone  
 certify the information shown herein is true and correct.

Signature Ground Party: TERRY L. DRUYVESTEIN  
 I, TERRY L. DRUYVESTEIN  
 certify that this Corner Record correctly represents work performed by me or under my direction in compliance with the "Corner Recordation Act" (20-22-301, et seq., M.C.A.)

Signature of Surveyor & Seal: [Signature]  
 Date: 02/90 Reg. No. 2927ES  
 Employer: STENSATTER DRUYVESTEIN AND SURVEYOR ASSOCIATES

Office of Clerk and Recorder, County of Lincoln. This "corner record" was filed for record on 1-4-91  
 was noted on the cross-index plat and is assigned page No. 4382 in book No. \_\_\_\_\_  
[Signature]  
 County Official



Cross Index No. T-5 T. 27 N R. 27 W P.M.M.