

INSTRUCTIONS

1. Original and/or subsequent record used to evaluate the corner position.
2. Description of evidence found, note discrepancies in the record, state method of establishing lost or obliterated corners.
3. Description of monument and accessories set to perpetuate the corner position.
4. Sketch of corner, show all pertinent data which can best be shown in a sketch example, corner marking, topography ties, position of accessories, etc.
5. Certification must be signed and sealed by Land Surveyor registered in the State of Montana.
6. Fill in Cross Index & Section Diagram at bottom of sheet.

CERTIFIED CORNER RECORDATION

Corner 520 | 521
529 | 528 T. 27 N R. 27 W P.M.M. LINCOLN County

ORIGINAL AND/OR
 SUBSEQUENT RECORD

ORIGINAL RECORD: Set a Shale Stone, 14" x 12" x 5", 10" in the ground, marked with 2 notches on S, 4 notches on E edges;
 From Which:
 A pine, 24" in diam. bears N30°E, 94 lks. dist. mkd. T27N R27W S21 B.T.
 A fir, 14" in diam. bears S27½°E, 41 lks. dist. mkd. T27N R27W S28 B.T.
 A tamarack, 14" in diam. bears S40°W, 20 lks. dist. mkd. T27N R27W S29 B.T.
 A tamarack, 18" in diam. bears N18°W, 39 lks. dist. mkd. T27N R27W S20 B.T.

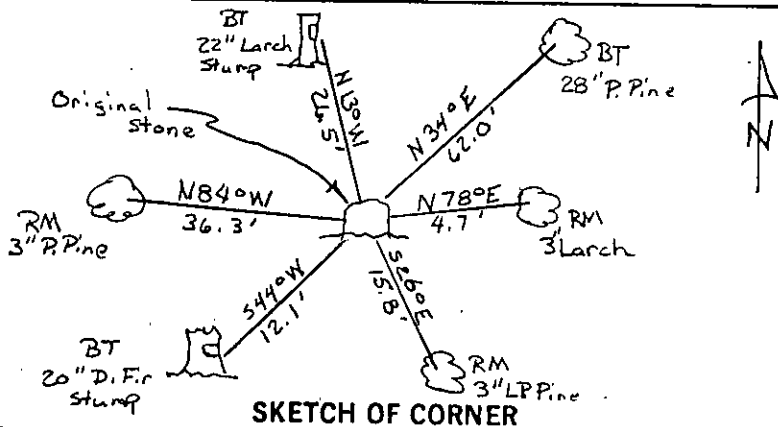
EVIDENCE FOUND

Found Set Stone with 4 Notches on East Side and 2 Notches on the South side. From Which a 28" P.Pine with grown over blaze and BLM BT sign bears N34°E, 62.0'. A 8' high 22" Larch stump with Burned out Blaze bears N13°W, 26.5'. A 20" D.Fir stump bears S44°W, 12.1'.

PERPETUATION

Left Stone in Place. Established Three RM Trees. An 3" P.Pine bears N84°W, 36.3'. A 3" LP.Pine bears S26°E, 15.8'. A 3" Larch bears N78°E, 4.7'. Blazed and Painted, and Placed MARLS Land Monument Sign all RM Trees.

Note: Declination used - 20°E
 Measurements taken to center of Tree.



CERTIFICATION

I, Rod Cone
 certify the information shown here is true and correct.

Signature Ground Party Rod Cone

TERRY L. DRUYVESTEIN MONTANA
 certify that this Corner Record correctly represents work performed by me or under my direction in compliance with the "Corner Recordation Act" (10-22-101) sec. M.C.A. DRUYVESTEIN
 Signature of Surveyor & Seal TERRY L. DRUYVESTEIN 2927ES
 Date: 02/90 Reg. No. 2927-ES
 Employer: STENSATTER DRUYVESTEIN & ASSOCIATES

Office of Clerk and Recorder, County of Lincoln. This "corner record" was filed for record on 1-4-91
 was noted on the cross-index plat and is assigned page No. 4381, in book No. _____
Janet P. Sugilby Bill Beckoff
 County Official

