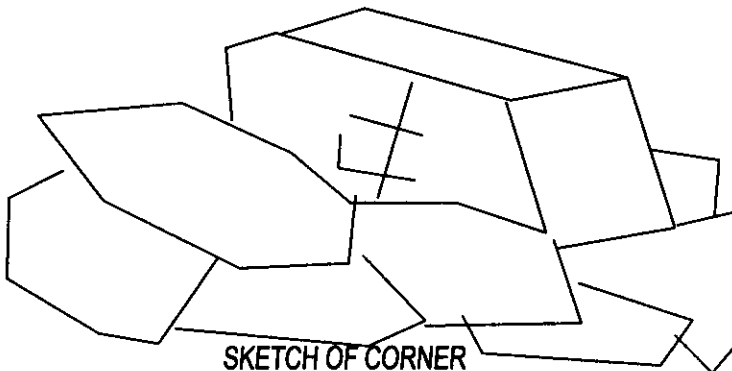
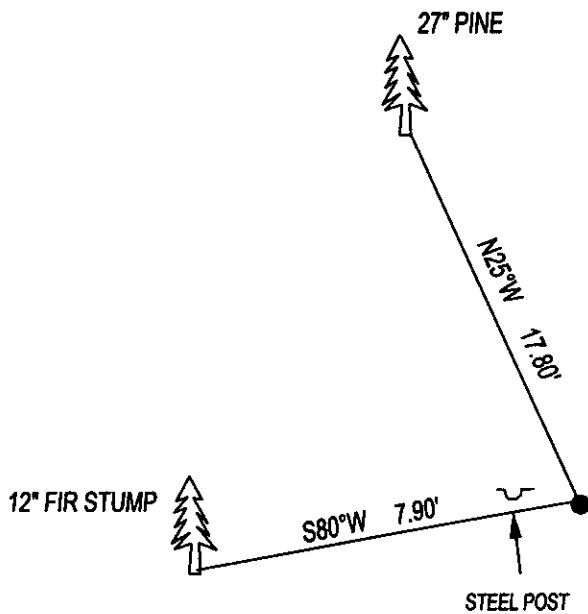


CERTIFIED CORNER RECORDATION

CORNER S1/4 CORNER SEC. 3 T. 27N R. 27W P.M.M., LINCOLN COUNTY

FOUND: STONE 10X6X4 WITH 1/4 ON NORTH, IN A LARGE MOUND OF STONE, FROM WHICH;
12" FIR STUMP BEARS S80°W 7.90' SCRIBED 1/4 S10 BT.
27" PINE BEARS N25°W 17.80' WITH OVERGROWN SCRIBE.

MAINTENANCE: REMOVED BRUSH AND TREE LIMBS FROM CORNER AND SET
A 5 FOOT STEEL POST 2 FEET EAST OF CORNER.
ATTACHED BT TAGS AND PAINTED 6" BAND ON BT'S.



SKETCH OF CORNER

CERTIFICATION

I, DAN CROFT
CERTIFY THE INFORMATION SHOWN HEREIN IS TRUE AND CORRECT.

SIGNATURE GROUND PARTY CHIEF

I, MARC J. CARSTENS
CERTIFY THAT THIS CORNER RECORD CORRECTLY REPRESENTS WORK
PERFORMED BY ME OR UNDER MY DIRECTION IN COMPLIANCE WITH THE
"CORNER RECORDATION ACT" (70-22-101, ET SEQ., M.C.A.)


SIGNATURE OF SURVEYOR & SEAL

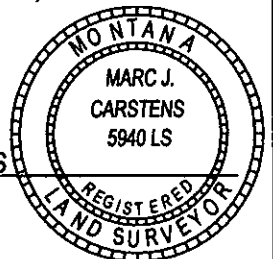
08-22-13

DATE

CARSTENS SURVEYING

EMPLOYER

5940LS
REG. NO.



OFFICE OF CLERK AND RECORDER, COUNTY OF LINCOLN

THIS "CORNER RECORD" WAS FILE

246952 BOOK: CCR CC&R'S

PAGE: 12072 Pages: 1

WAS I

STATE OF MONTANA LINCOLN COUNTY

AND IS ASSIGNED PAGE NO. _____

RECORDED: 08/26/2013 11:40 KOI: CC&R'S

TAMMY D. LAUER CLERK AND RECORDER

FEE: \$0.00

BY: 

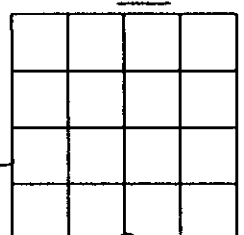
COUNTY OFFICIAL

FOR: CARSTENS LAND SURVEYING P.O. BOX 1374, POLSON, MONTANA

CROSS INDEX NO. E-15 T. 27N R. 27W P.M.M.

ADOPTED JULY 1, 1981, MONTANA BOARD OF PROFESSIONAL ENGINEERS & LAND SURVEYORS

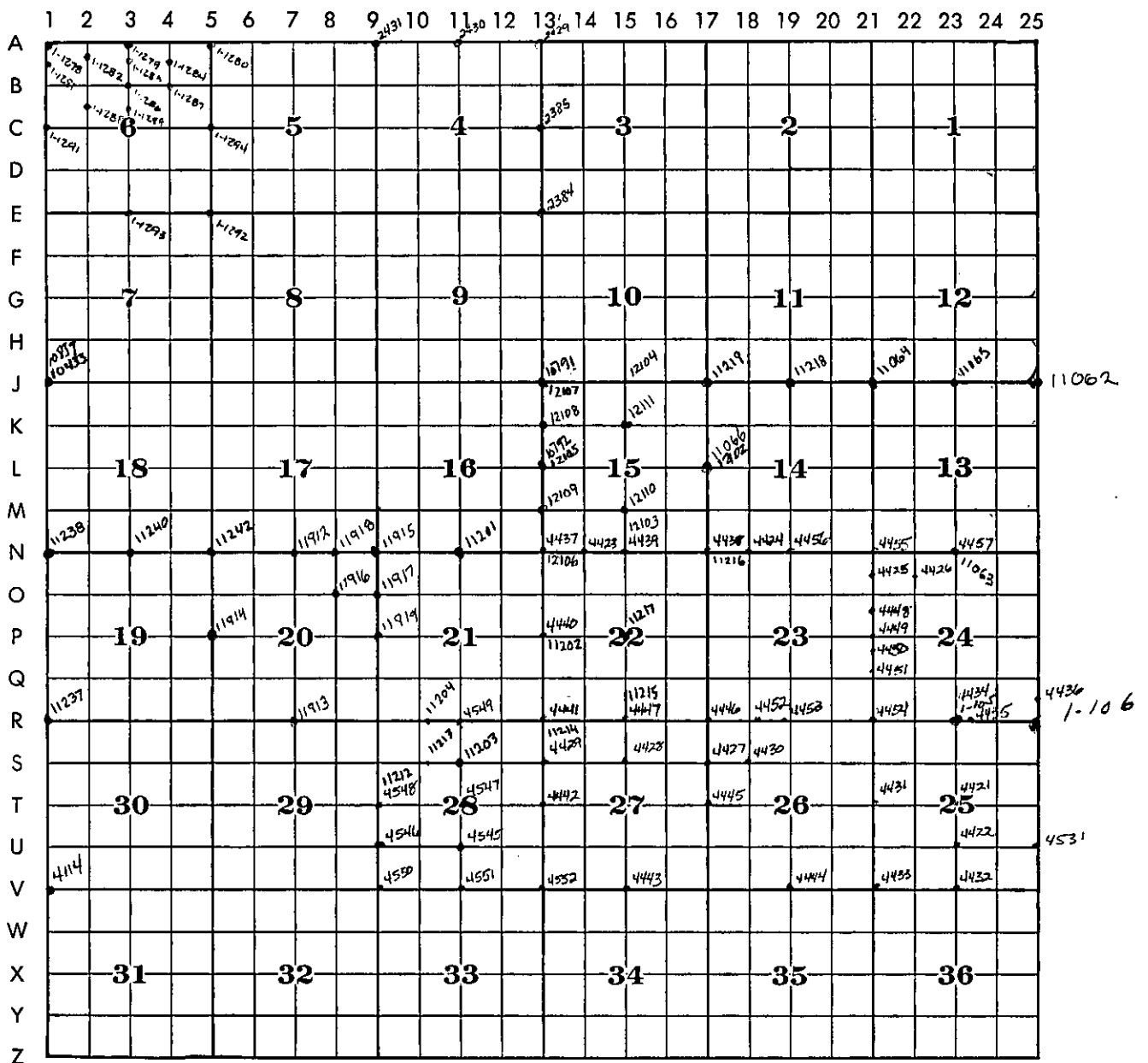
SEC. 3



● CORNER THIS SHEET

CROSS INDEX PLAT

T. 27 N. R. 28 W. MER.



LEGEND



Corners filed under this cross index plat.



Certificates filed in adjoining township as indicated by solid quadrant(s).

Each corner certificate is identified by an alphabetical-numerical coordinate number which is derived from the system shown on the township diagram. For example, the quarter-corner between Section 5 and 6 is identified as Corner C-5.

Corners such as meander corners or subdivision corners which are not located at intersecting lines on the above diagram will be identified by reference to the nearest applicable coordinate lines, thus:
AB-1; M-1-2; VW-19-20.

Corners common to adjoining townships will be identified by coordinates of the townships in which the certificates are to be filed.

Within each township record, the certificates will be filed in alphabetical-numerical sequence.