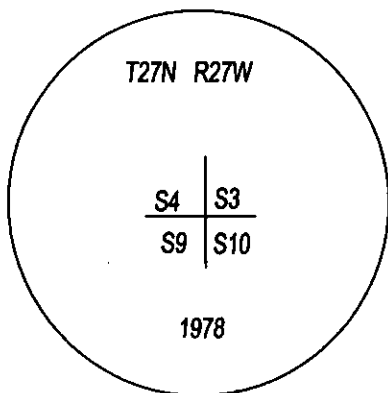
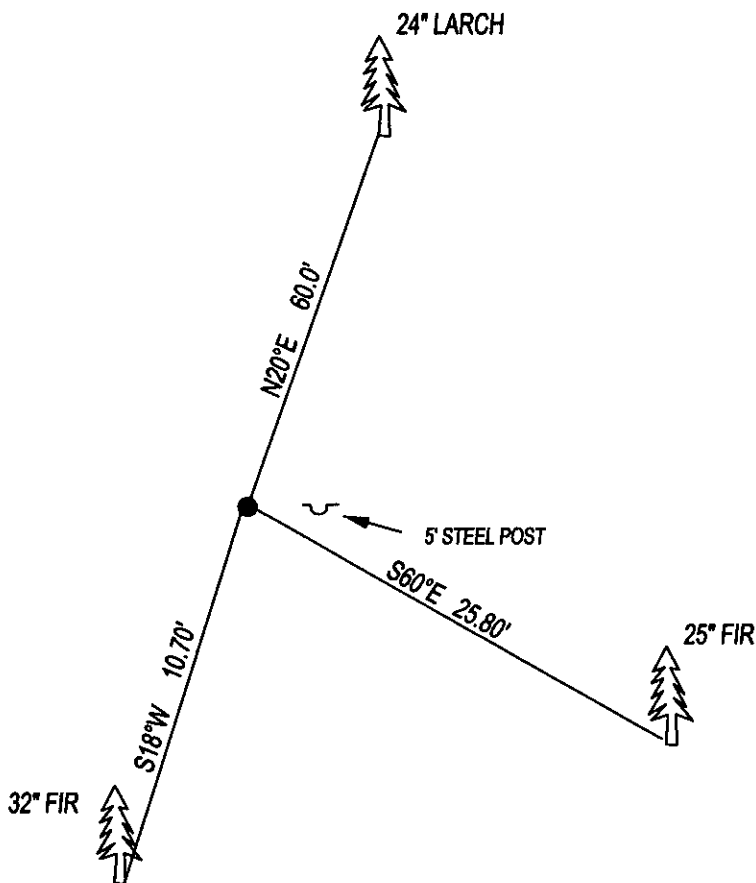


CERTIFIED CORNER RECORDATION

CORNER SW CORNER SEC. 3 T. 27N , R. 27W , P.M.M., LINCOLN COUNTY

FOUND: 3 1/4" B.L.M. BRASS CAP STAMPED AS SHOWN, FROM WHICH;  
24" LARCH BEARS N20°E 60.00' WITH OVERGROWN SCRIBE.  
25" FIR BEARS S60°E 25.80' WITH OVERGROWN SCRIBE.  
32" FIR BEARS S18°W 10.70' WITH OVERGROWN SCRIBE.

MAINTENANCE: REMOVED BRUSH AND TREE LIMBS FROM CORNER AND SET  
A 5 FOOT STEEL POST 2 FEET EAST OF CORNER.  
ATTACHED BT TAG'S AND PAINTED 6" BAND ON BT'S.



SKETCH OF CORNER

CERTIFICATION

I, DAN CROFT  
CERTIFY THE INFORMATION SHOWN HEREIN IS TRUE AND CORRECT.

SIGNATURE GROUND PARTY CHIEF

I, MARC J. CARSTENS  
CERTIFY THAT THIS CORNER RECORD CORRECTLY REPRESENTS WORK  
PERFORMED BY ME OR UNDER MY DIRECTION IN COMPLIANCE WITH THE  
"CORNER RECORDATION ACT" (70-22-101, ET SEQ., M.C.A.)

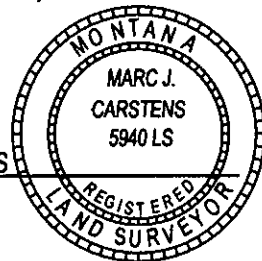
SIGNATURE OF SURVEYOR & SEAL

08-22-13

DATE

CARSTENS SURVEYING  
EMPLOYER

5940LS  
REG. NO.



OFFICE OF CLERK AND RECORDER COUNTY OF LINCOLN  
THIS "CORNER RECORD"

246950 BOOK: CCR CC&R'S PAGE: 12070 Pages: 1

STATE OF MONTANA LINCOLN COUNTY

AND IS ASSIGNED PAGE I

RECORDED: 08/26/2013 11:30 KOI: CC&R'S

TAMMY D. LAUER CLERK AND RECORDER

FEE: \$0.00

BY:

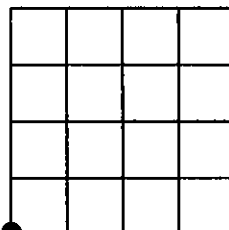
FOR: CARSTENS LAND SURVEYING P.O. BOX 1374, POLSON, MONTANA

COUNTY OFFICIAL

CROSS INDEX NO. E-13 T. 27N , R. 27W , P.M.M.

ADOPTED JULY 1, 1981, MONTANA BOARD OF PROFESSIONAL ENGINEERS & LAND SURVEYORS

SEC. 3



● CORNER THIS SHEET