

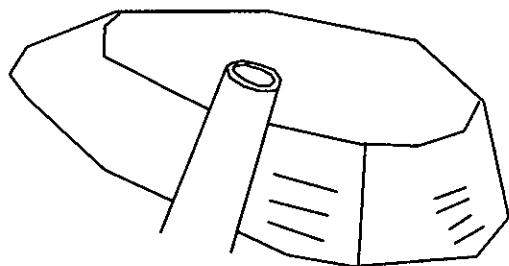
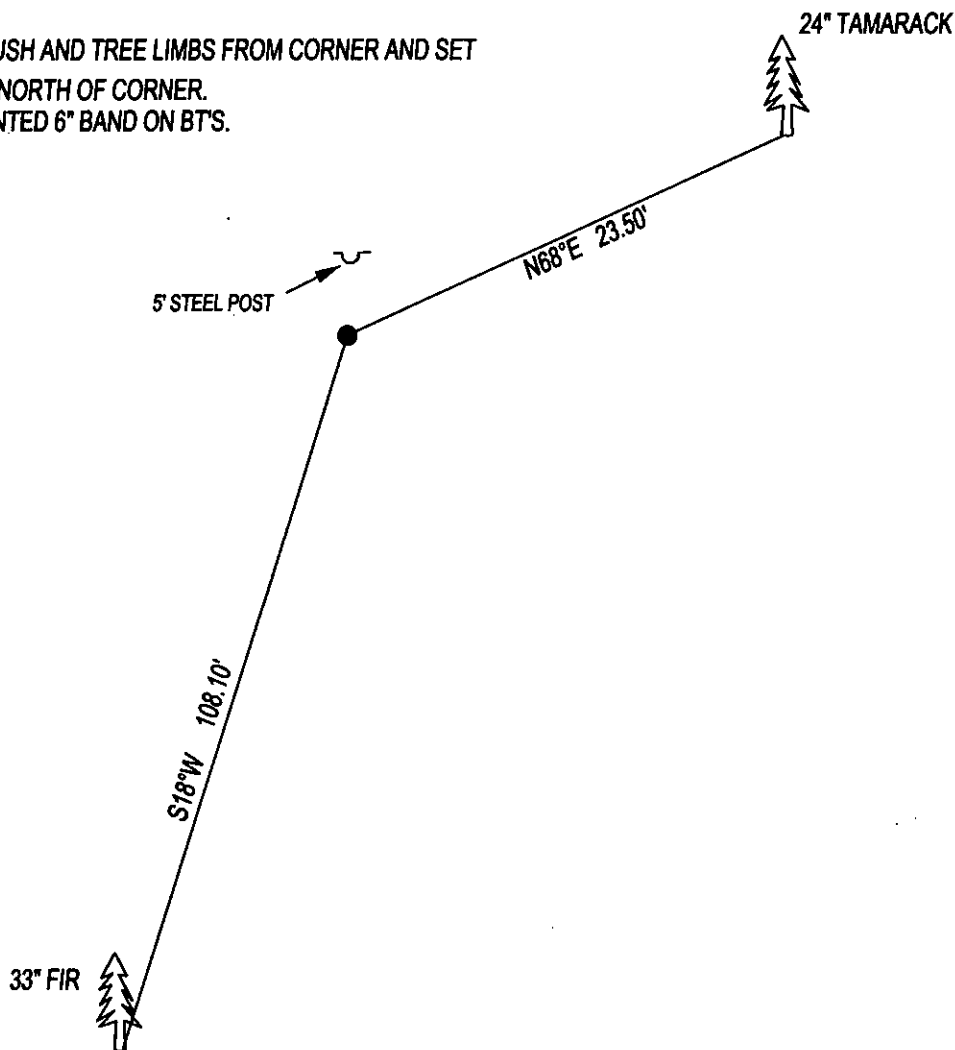
# CERTIFIED CORNER RECORDATION

CORNER SW SEC. 16 T. 27N R. 27W P.M.M., LINCOLN COUNTY

GLO RECORD: SET A SHALE STONE 20x14x8, 14 INCHES INTO THE GROUND WITH 3 NOTCHES ON SOUTH AND 4 NOTCHES ON EAST FACE, FROM WHICH;  
 12" TAMARACK BEARS N68°E 23.10' MARKED T27N R27W S16 BT.  
 10" TAMARACK BEARS S75°E 36.30' MARKED T27N R27W S21 BT.  
 18" FIR BEARS S18°W 106.26' MARKED T27N R27W S20 BT.  
 10" TAMARACK BEARS N70°E 59.40' MARKED T27N R27W S16 BT.

FOUND: STONE WELL SET WITH 3 NOTCHES ON SOUTH AND 4 ON EAST WITH A 1 INCH PIPE ON THE SOUTH SIDE OF STONE ANGLED OVER TOP OF STONE, FROM WHICH;  
 24" TAMARACK BEARS N68°E 23.50' WITH OVERGROWN SCRIBE.  
 33" FIR SNAG BEARS S18°W 108.10' WITH VISIBLE SCRIBE.

MAINTENANCE: REMOVED BRUSH AND TREE LIMBS FROM CORNER AND SET A 5 FOOT STEEL POST 2 FEET NORTH OF CORNER. ATTACHED BT TAG'S AND PAINTED 6" BAND ON BT'S.



SKETCH OF CORNER

## CERTIFICATION

I, DAN CROFT  
 CERTIFY THE INFORMATION SHOWN HEREIN IS TRUE AND CORRECT.

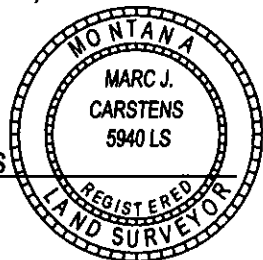
SIGNATURE GROUND PARTY CHIEF

I, MARC J. CARSTENS  
 CERTIFY THAT THIS CORNER RECORD CORRECTLY REPRESENTS WORK PERFORMED BY ME OR UNDER MY DIRECTION IN COMPLIANCE WITH THE "CORNER RECORDATION ACT" (70-22-101, ET SEQ., M.C.A.)

[Signature]  
 SIGNATURE OF SURVEYOR & SEAL

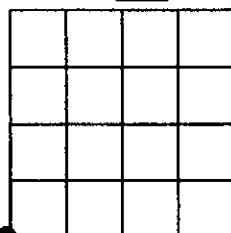
07-11-13  
 DATE  
CARSTENS SURVEYING  
 EMPLOYER

5940LS  
 REG. NO.



246248 BOOK: CCR CC&R'S PAGE: 12050 Pages: 1  
 STATE OF MONTANA LINCOLN COUNTY  
 RECORDED: 07/15/2013 11:50 KOI: CC&R'S  
 TAMMY D. LAUER CLERK AND RECORDER  
 FEE: \$0.00 BY: John A. Benson, deputy  
 FOR: FILED  
 COUNTY OFFICIAL  
 CROSS INDEX NO. N-9 T. 27N R. 27W P.M.M.  
 ADOPTED JULY 1, 1981, MONTANA BOARD OF PROFESSIONAL ENGINEERS & LAND SURVEYORS

SEC. 16



● CORNER THIS SHEET