

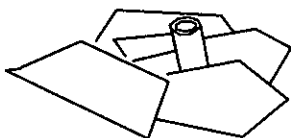
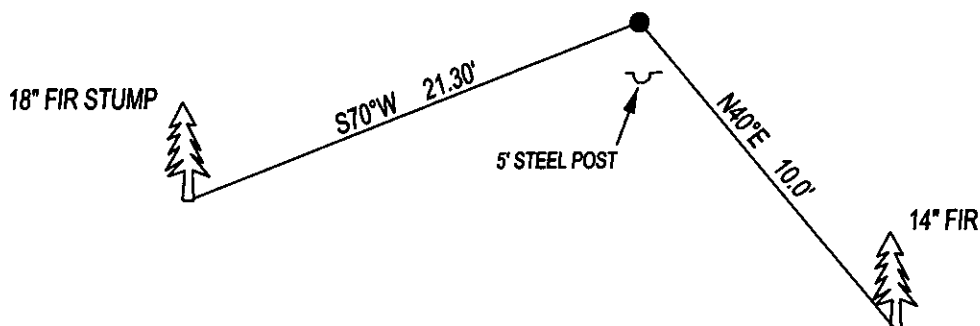
CERTIFIED CORNER RECORDATION

CORNER W1/4 SEC. 16 T. 27N R. 27W P.M.M., LINCOLN COUNTY

GLO RECORD: SET A SHALE STONE 16x8x6, 11 INCHES INTO THE GROUND WITH 1/4 ON WEST, FROM WHICH;
10" FIR BEARS S50°E 9.90" SCRIBED 1/4 S16 BT.
10" FIR BEARS S70°W 21.78" SCRIBED 1/4 S17 BT.

FOUND: 1" PIPE SET IN A COLLAR OF STONE, FROM WHICH;
14" FIR BEARS S40°E 10.0' WITH VISIBLE SCRIBE.
19" FIR STUMP BEARS S70°W 21.30'.

MAINTENANCE: REMOVED BRUSH AND TREE LIMBS FROM CORNER AND SET
A 5 FOOT STEEL POST 2 FEET SOUTH OF CORNER.
ATTACHED BT TAG'S AND PAINTED 6" BAND ON BT.



SKETCH OF CORNER

CERTIFICATION

I, DAN CROFT
CERTIFY THE INFORMATION SHOWN HEREIN IS TRUE AND CORRECT.

SIGNATURE GROUND PARTY CHIEF

I, MARC J. CARSTENS
CERTIFY THAT THIS CORNER RECORD CORRECTLY REPRESENTS WORK
PERFORMED BY ME OR UNDER MY DIRECTION IN COMPLIANCE WITH THE
"CORNER RECORDATION ACT" (70-22-101, ET SEQ., M.C.A.)

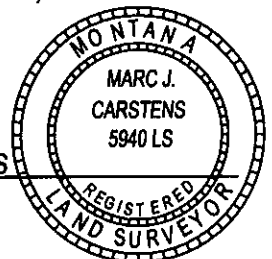
[Signature]
SIGNATURE OF SURVEYOR & SEAL

07-11-13

DATE

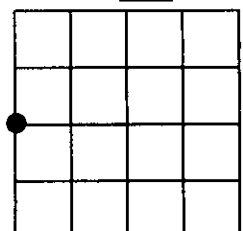
CARSTENS SURVEYING
EMPLOYER

5940LS
REG. NO.



246247 BOOK: CCR CC&R'S PAGE: 12049 Pages: 1
STATE OF MONTANA LINCOLN COUNTY
RECORDED: 07/15/2013 11:44 KOI: CC&R'S
TAMMY D. LAUER CLERK AND RECORDER
FEE: \$0.00 BY: Robina Benson, Deputy
FOR: FILED
COUNTY OFFICIAL
CROSS INDEX NO. L-9 T. 27N R. 27W P.M.M.
ADOPTED JULY 1, 1981, MONTANA BOARD OF PROFESSIONAL ENGINEERS & LAND SURVEYORS

SEC. 16



● CORNER THIS SHEET