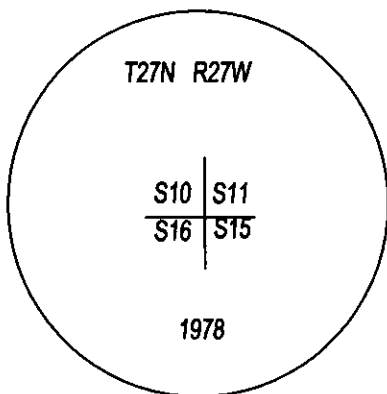
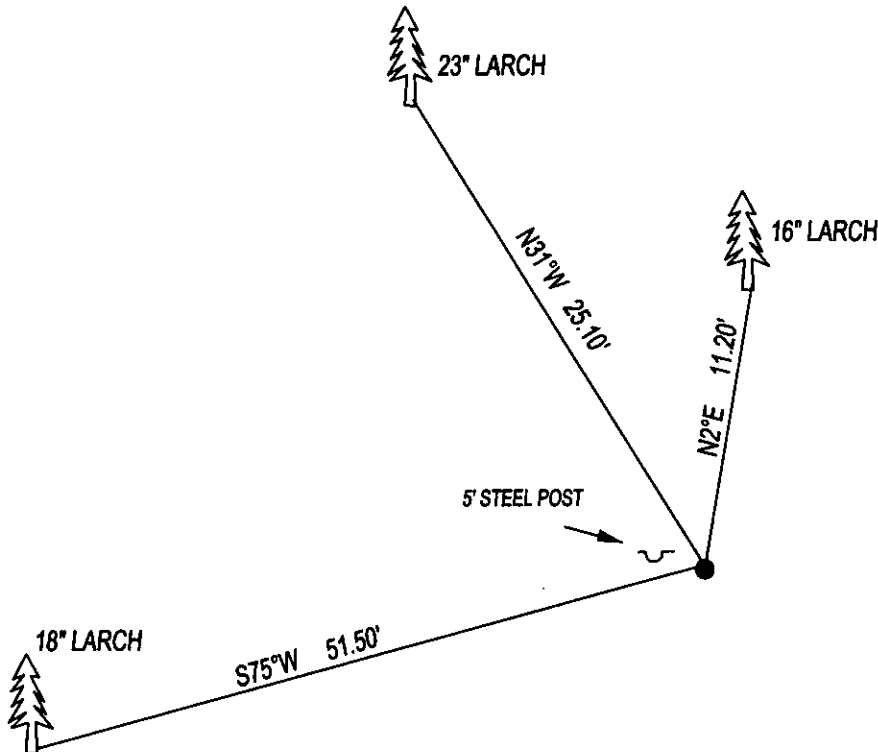


CERTIFIED CORNER RECORDATION

CORNER NE SEC. 15 T. 27N R. 27W P.M.M., LINCOLN COUNTY

FOUND: 3 1/4" B.L.M. BRASS CAP STAMPED AS SHOWN AT THE BASE OF A 25 FOOT CLIFF, FROM WHICH;
 16" DEAD LARCH BEARS N2°E 11.20" WITH SCRIBE.
 18" LARCH BEARS S75°W 51.50" WITH OVERGROWN SCRIBE.
 23" LARCH BEARS N31°W 25.10" WITH OVERGROWN SCRIBE.

MAINTENANCE: REMOVED BRUSH AND TREE LIMBS FROM CORNER AND SET
 A 5 FOOT STEEL POST 2 FEET WEST OF CORNER.
 ATTACHED BT TAG'S AND PAINTED 6" BAND ON BT'S.



SKETCH OF CORNER

CERTIFICATION

I, DAN CROFT
 CERTIFY THE INFORMATION SHOWN HEREIN IS TRUE AND CORRECT.

SIGNATURE GROUND PARTY CHIEF

I, MARC J. CARSTENS
 CERTIFY THAT THIS CORNER RECORD CORRECTLY REPRESENTS WORK
 PERFORMED BY ME OR UNDER MY DIRECTION IN COMPLIANCE WITH THE
 "CORNER RECORDATION ACT" (70-22-101, ET SEQ., M.C.A.)


 SIGNATURE OF SURVEYOR & SEAL

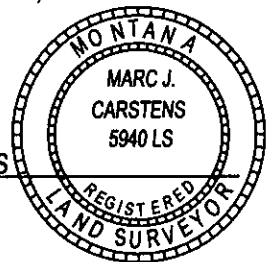
07-02-13

DATE

CARSTENS SURVEYING

EMPLOYER

5940LS
 REG. NO.



OFFICE OF CLERK AND RECORDER, COUNTY OF LINCOLN

THIS "CORNER RECORD" WAS FILED FOR

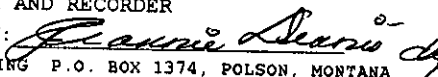
AND IS ASSIGNED PAGE NO. 17

WAS NOTED

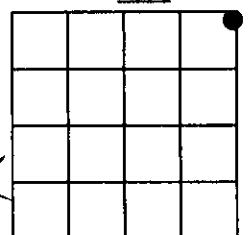
COUNTY OFFICIAL

CROSS INDEX NO. J-17 T. 27N R. 27W P.M.M.

ADOPTED JULY 1, 1981, MONTANA BOARD OF PROFESSIONAL ENGINEERS & LAND SURVEYORS

246193 BOOK; CCR CC&R'S PAGE: 12046 Pages: 1
 STATE OF MONTANA LINCOLN COUNTY
 RECORDED: 07/11/2013 10:45 KOI: CC&R'S
 TAMMY D. LAUER CLERK AND RECORDER
 FEE: \$0.00 BY: 
 FOR: CARSTENS LAND SURVEYING P.O. BOX 1374, POLSON, MONTANA

SEC. 15



● CORNER THIS SHEET