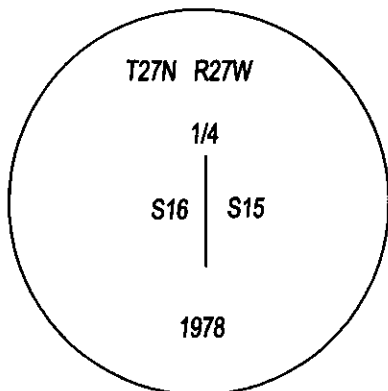
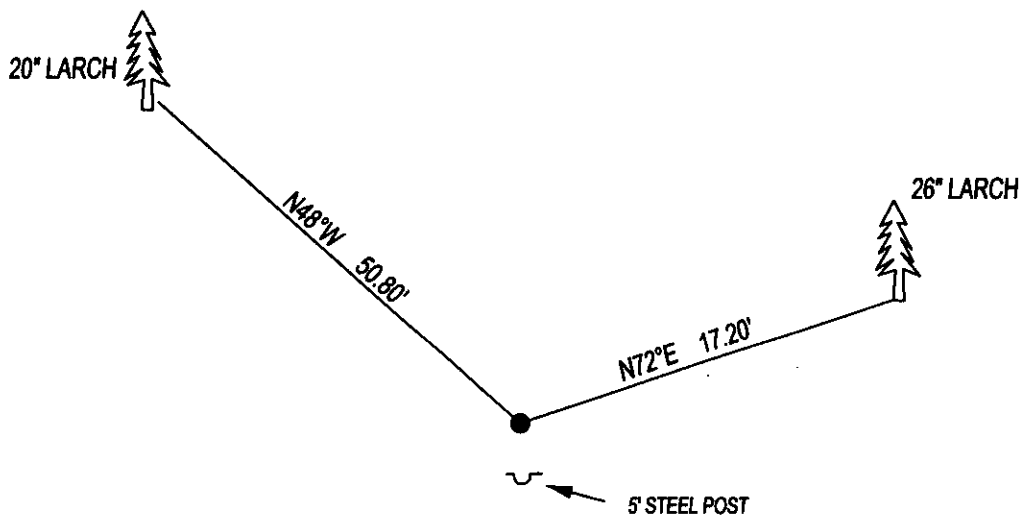


CERTIFIED CORNER RECORDATION

CORNER W1/4 SEC. 15 T. 27N R. 27W P.M.M., LINCOLN COUNTY

FOUND: 3 1/4" B.L.M. BRASS CAP STAMPED AS SHOWN, FROM WHICH;
 26° LARCH BEARS S72°E 17.20" WITH OVERGROWN SCRIBE.
 20° LARCH BEARS N48°W 50.80" WITH OVERGROWN SCRIBE.

MAINTENANCE: REMOVED BRUSH AND TREE LIMBS FROM CORNER AND SET
 A 5 FOOT STEEL POST 2 FEET SOUTH OF CORNER.
 ATTACHED BT TAG'S AND PAINTED 6" BAND ON BT'S.



SKETCH OF CORNER

CERTIFICATION

I, DAN CROFT
 CERTIFY THE INFORMATION SHOWN HEREIN IS TRUE AND CORRECT.

SIGNATURE GROUND PARTY CHIEF

I, MARC J. CARSTENS
 CERTIFY THAT THIS CORNER RECORD CORRECTLY REPRESENTS WORK
 PERFORMED BY ME OR UNDER MY DIRECTION IN COMPLIANCE WITH THE
 "CORNER RECORDATION ACT" (70-22-101, ET SEQ., M.C.A.)

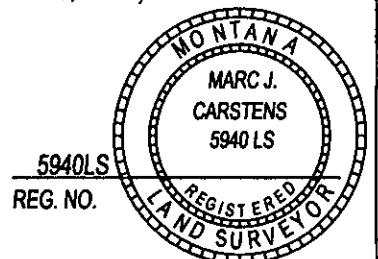

 SIGNATURE OF SURVEYOR & SEAL

07-02-13

DATE

CARSTENS SURVEYING

EMPLOYER



5940LS
 REG. NO.


OFFICE OF CLERK AND RECORDER, COUNTY OF LINCOLN

THIS "CORNER RECORD" WAS FILED FOR RI
 WAS NOTED O
 AND IS ASSIGNED PAGE NO. _____ IN

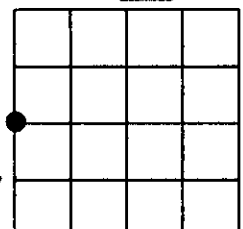
COUNTY OFFICIAL

CROSS INDEX NO. L-13 T. 27N R. 27W P.M.M.

ADOPTED JULY 1, 1981, MONTANA BOARD OF PROFESSIONAL ENGINEERS & LAND SURVEYORS

246191 BOOK: CCR CC&R'S PAGE: 12044 Pages: 1
 STATE OF MONTANA LINCOLN COUNTY
 RECORDED: 07/11/2013 10:35 KOI: CC&R'S
 TAMMY D. LAUER CLERK AND RECORDER
 FEE: \$0.00 BY: 
 FOR: CARSTENS LAND SURVEYING P.O. BOX 1374, POLSON, MONTANA

SEC. 15



● CORNER THIS SHEET