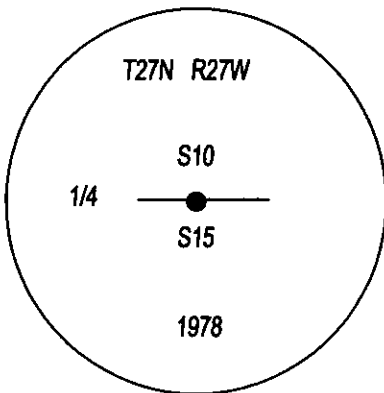
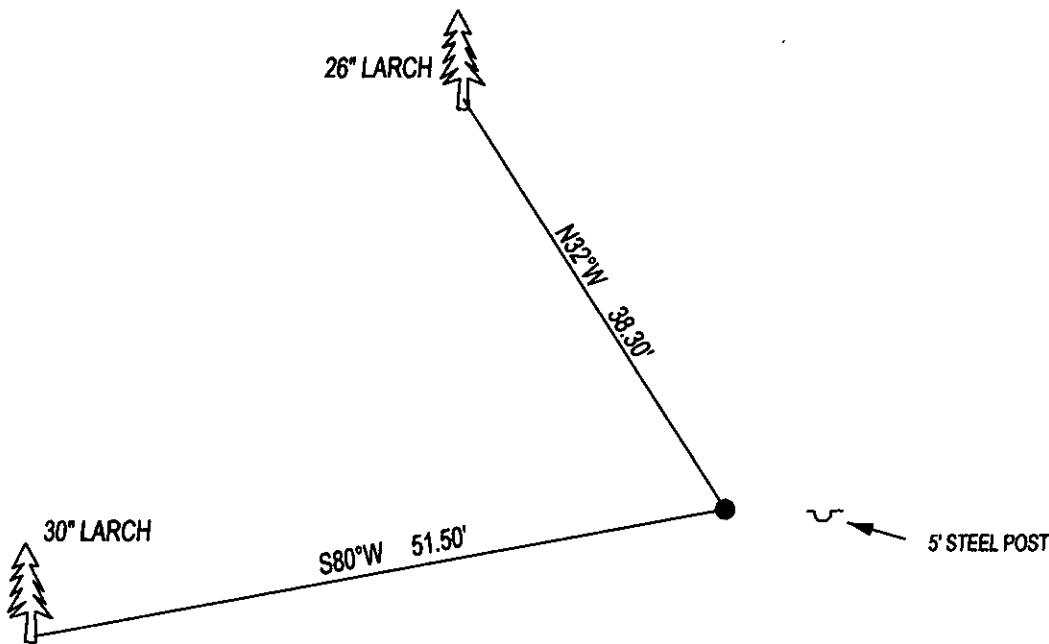


CERTIFIED CORNER RECORDATION

CORNER N1/4 SEC. 15 T. 27N R. 27W P.M.M., LINCOLN COUNTY

FOUND: 3 1/4" B.L.M. BRASS CAP STAMPED AS SHOWN, FROM WHICH;
30" LARCH BEARS S80°W 51.50" WITH OVERGROWN SCRIBE.
26" LARCH BEARS N32°W 38.30" WITH FULL SCRIBE VISIBLE.

MAINTENANCE: REMOVED BRUSH AND TREE LIMBS FROM CORNER AND SET
A 5 FOOT STEEL POST 2 FEET EAST OF CORNER.
ATTACHED BT TAG'S AND PAINTED 6" BAND ON BT'S.



SKETCH OF CORNER

CERTIFICATION

I, DAN CROFT
CERTIFY THE INFORMATION SHOWN HEREIN IS TRUE AND CORRECT.

SIGNATURE GROUND PARTY CHIEF

I, MARC J. CARSTENS
CERTIFY THAT THIS CORNER RECORD CORRECTLY REPRESENTS WORK
PERFORMED BY ME OR UNDER MY DIRECTION IN COMPLIANCE WITH THE
"CORNER RECORDATION ACT" (70-22-101, ET SEQ., M.C.A.)

[Signature]
SIGNATURE OF SURVEYOR & SEAL

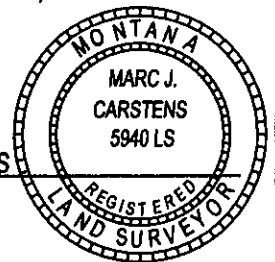
07-02-13

DATE

CARSTENS SURVEYING

EMPLOYER

5940LS
REG. NO.



OFFICE OF CLERK AND RECORDER, COUNTY OF LINCOLN

THIS "CORNER RECORD" WAS FILED FOR

AND IS ASSIGNED PAGE NO.

WAS NOTED

COUNTY OFFICIAL

CROSS INDEX NO. J-15

ADOPTED JULY 1, 1981, MONTANA BOARD OF PROFESSIONAL ENGINEERS & LAND SURVEYORS

246190 BOOK: CCR CC&R'S PAGE: 12043 Pages: 1
STATE OF MONTANA LINCOLN COUNTY

RECORDED: 07/11/2013 10:30 KOI: CC&R'S

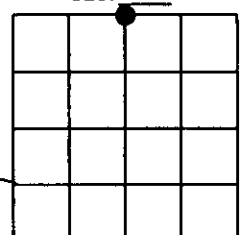
TAMMY D. LAUER CLERK AND RECORDER

FEE: \$0.00

BY: [Signature]
FOR: CARSTENS LAND SURVEYING P.O. BOX 1374, POLSON, MONTANA

T. 27N R. 27W P.M.M.

SEC. 15



● CORNER THIS SHEET