

# CERTIFIED CORNER RECORDATION

Corner South 1/4 - Section 9 T. 27 N. R. 27 W. P.M.M. Lincoln County

1/4 CORNER COMMON TO SECTIONS 9 & 16.

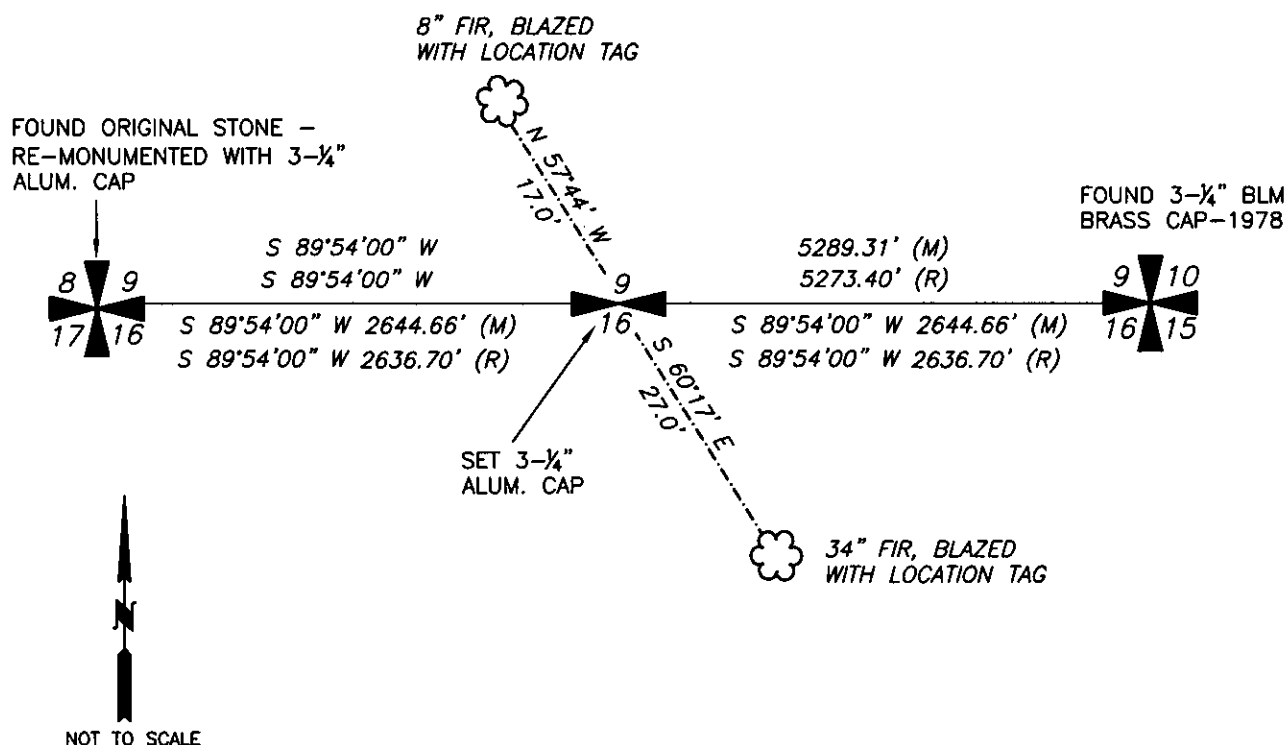
G.L.O. RECORD 1900 - Set a shale stone 15x12x6 ins., 10 ins in the ground, for 1/4 Sec. Cor. marked 1/4 on N. face, from which:

- a tamarack 30 ins. in diam. bears N 45° W, 56 Lks dist., marked 1/4 S 9, B.T.,
- a fir 15 ins. in diam. bears S 10° E, 44 Lks dist., marked 1/4 S 16, B.T.,

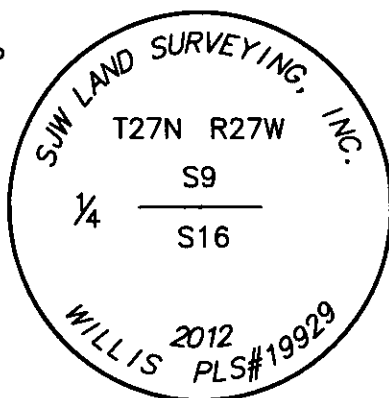
FOUND 2012 - This corner position falls in a area with previous logging activity. A thorough search was conducted and there was no monument found. There was also no original evidence found. However, there was a 34" fir tree found with a blaze and a metal location tag scribed "NW 30' BT 1981". This bearing tree bears S 60° 17' E, 27.0' from my calculated position for the corner, which is at midpoint between the Southeast and Southwest Corners of Section 9. Since there is no Land Corner Recordation describing this corner position or it's accessories, together with no a specific bearing but rather just a vague direction scribed on the tag, and a distance given to the nearest foot, I hold my calculated position for this corner and use the bearing tree as collateral evidence in support of my calculated corner position.

I set a 3/8" x 24" rebar with a 3-1/4" aluminum cap, marked: "WILLIS PLS#19929 2012" as shown and described below. I blaze, establish location tags, and paint 6" red bands on the following accessories:

- A 34" Fir, bears S. 60°17' E., 27.0' sect.
- An 8" Fir, bears N. 57°44' W., 17.0 feet.



3-1/4" ALUM. CAP



## SKETCH OF CORNER

Office of Clerk and Recorder, County of \_\_\_\_\_ This "corner

record" was filed for reco

was noted on the cross-

book No. \_\_\_\_\_

240350 BOOK: CCR CC&R'S PAGE: 11984 Pages: 1

STATE OF MONTANA LINCOLN COUNTY

RECORDED: 08/22/2012 9:10 KOI: CC&R'S

TAMMY D. LAUER CLERK AND RECORDER

FEE: \$0.00

FOR: FILED

BY: *Stewart J. Willis* Deputy

Cross Index No. \_\_\_\_\_ T. \_\_\_\_\_ R. \_\_\_\_\_ PMM

## CERTIFICATION

STEWART J. WILLIS

certify the information shown herein is true and correct.

Signature of Surveyor

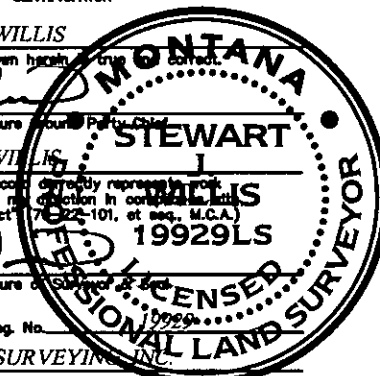
STEWART J. WILLIS

certify that this Corner Recordation correctly represents work performed by me or under my direction in accordance with the "Corner Recordation Act" (7-22-101, et seq., M.C.A.)

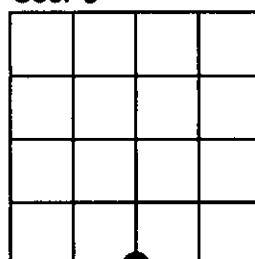
Signature of Surveyor

Date: 8-21-12 Reg. No. 19929

Employer: SJW LAND SURVEYING, INC.



Sec. 9



corner this sheet